

## TA serial sections (10 $\mu$ m) stained for AChE

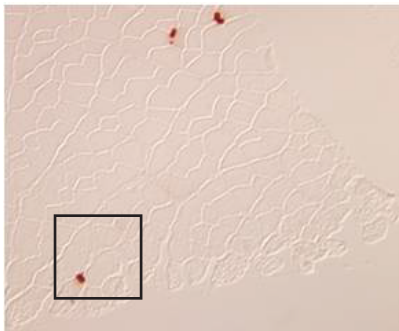


Image #135

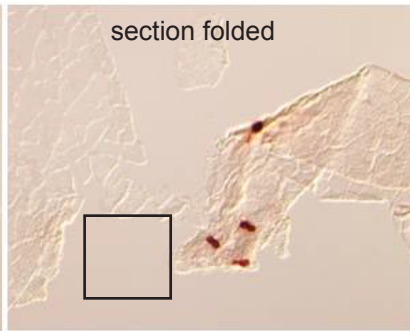


Image #136

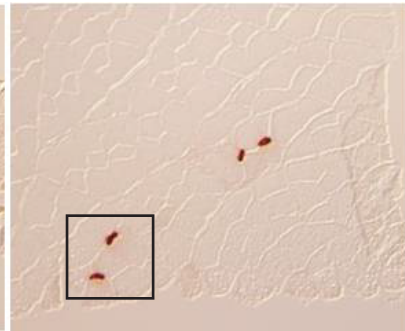


Image #137

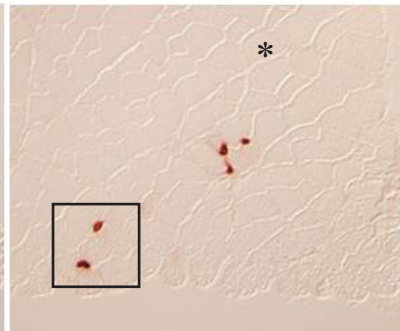


Image #138

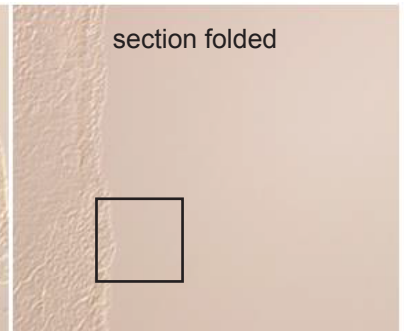


Image #139

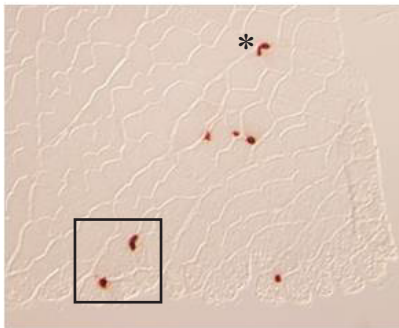


Image #140

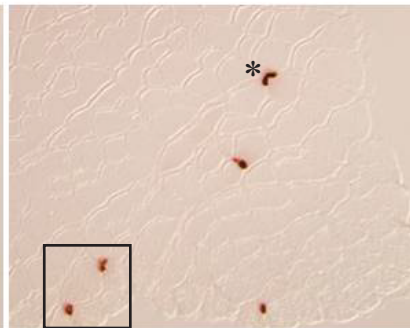


Image #141

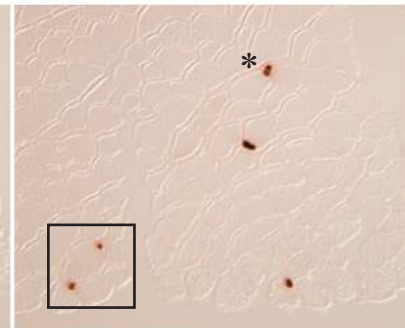


Image #142

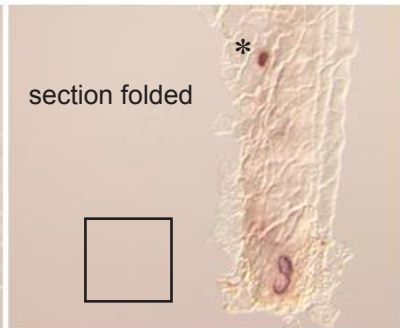


Image #143

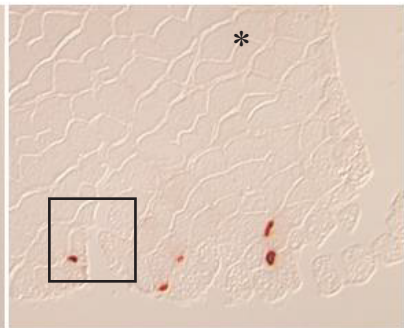


Image #144

Supplementary Fig. S1: Serial sections of TA muscle (10 $\mu$ m) stained for AChE demonstrating the distribution of synapses. Synapses can be seen to run for 4 sections (asterisk), 6 sections (top Rt. in the square) and 10 sections (bottom Lt. in the square).