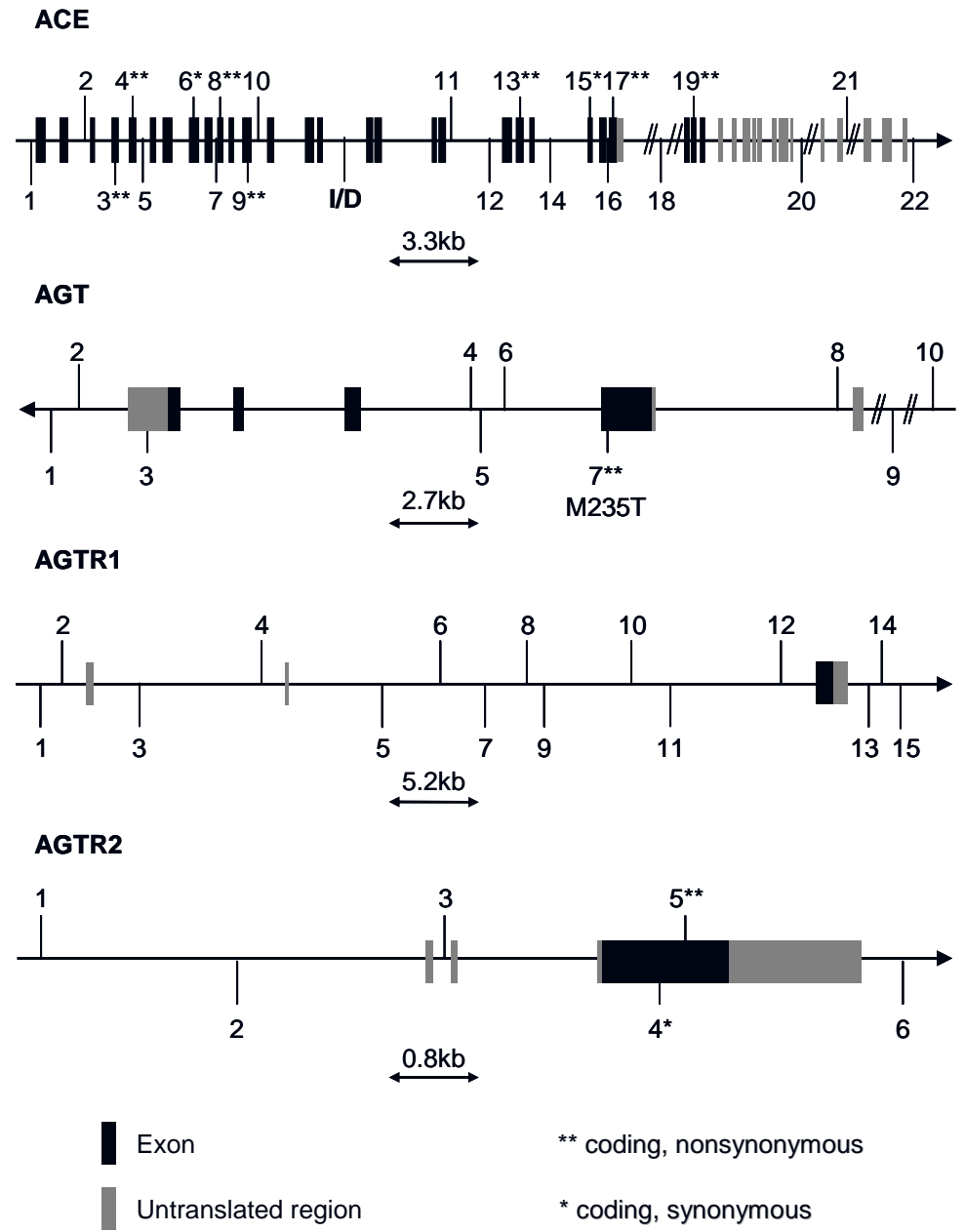
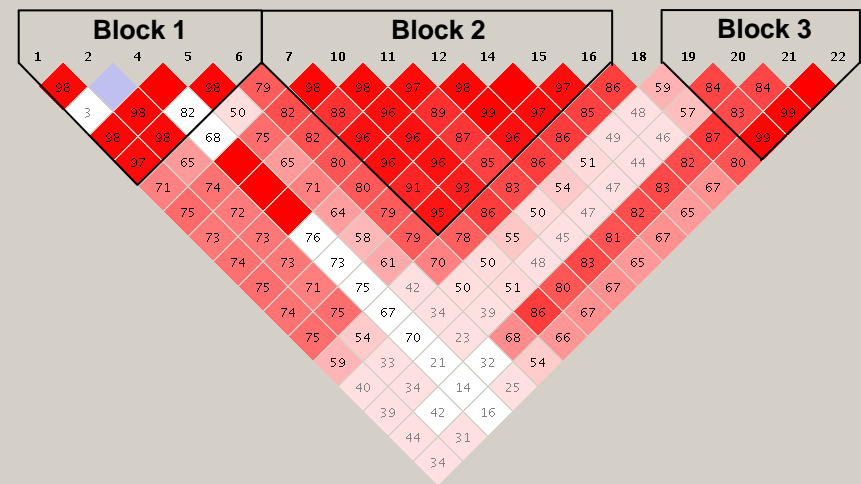
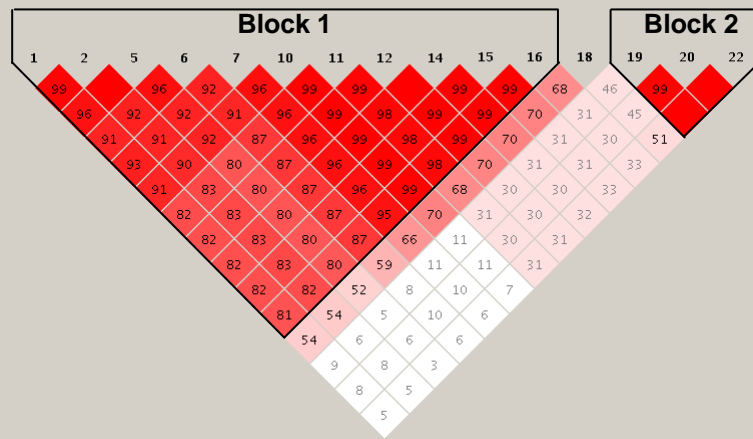
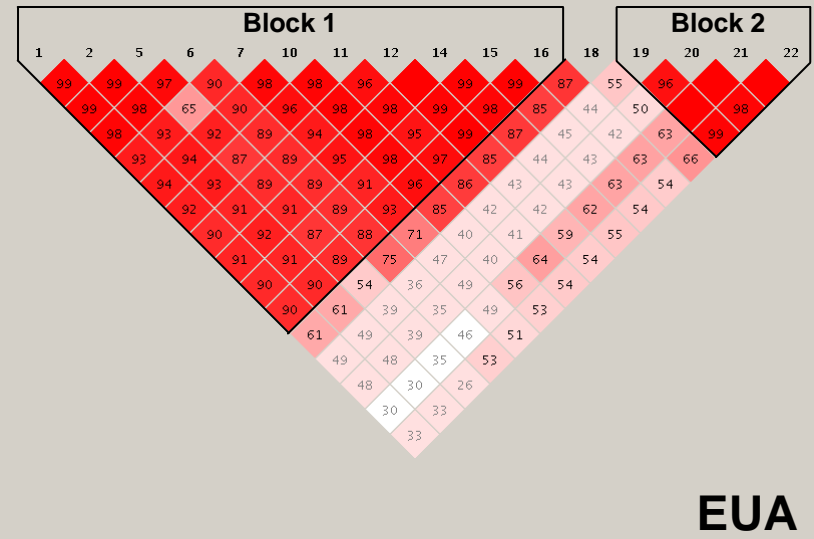
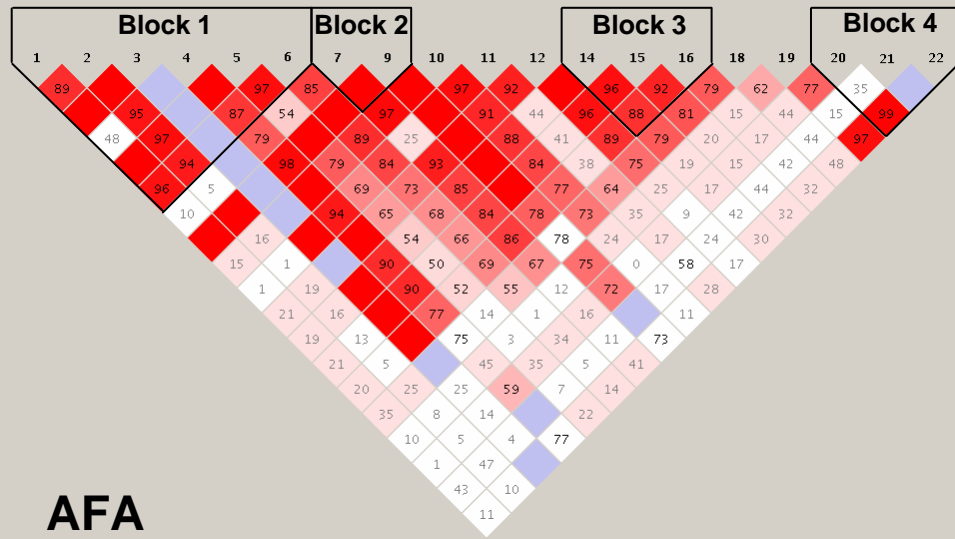


Supplementary Figure 1



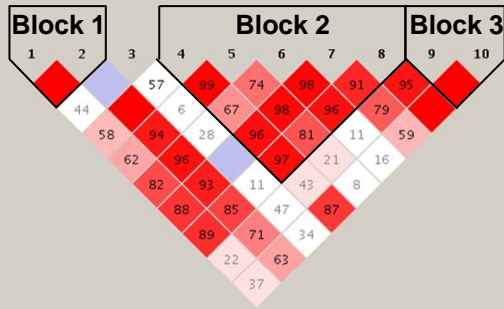
Supplementary Figure 2



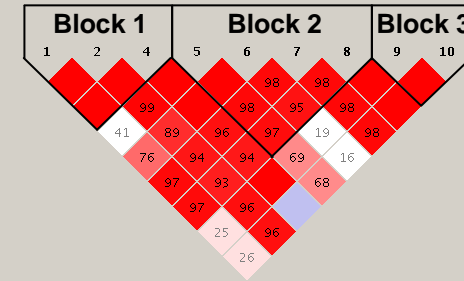
CHN

HIS

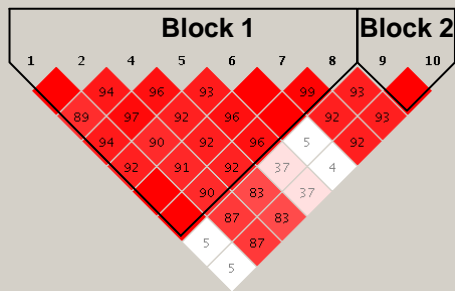
Supplementary Figure 3



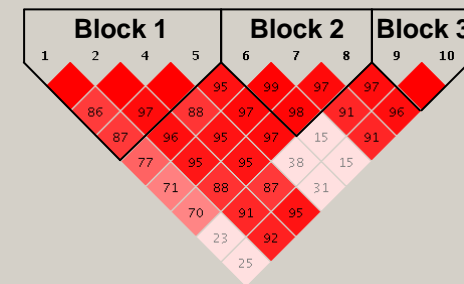
AFA



EUA

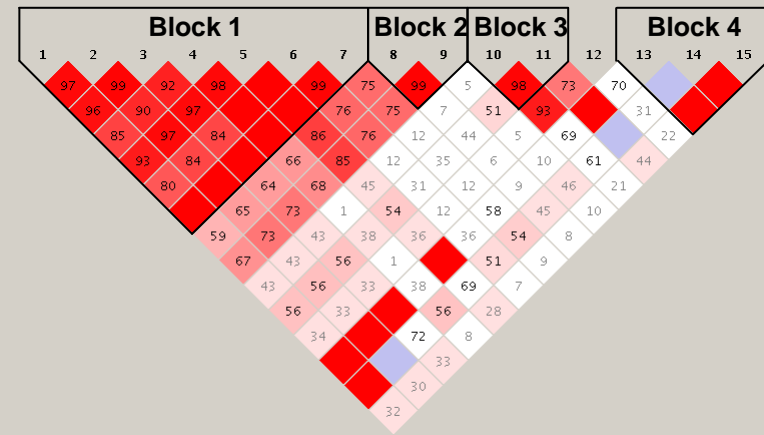
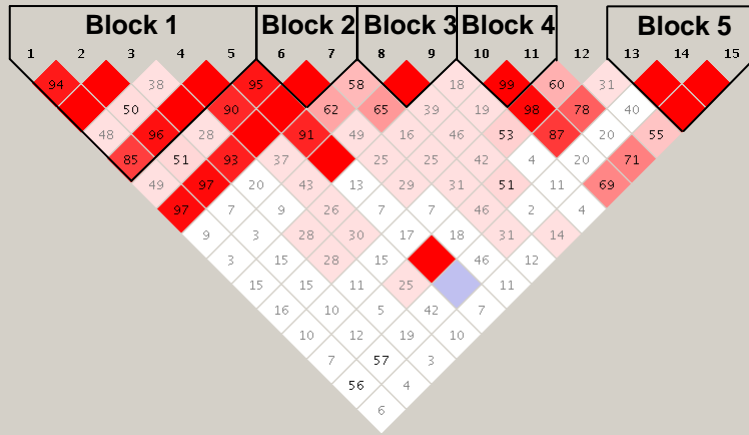


CHN



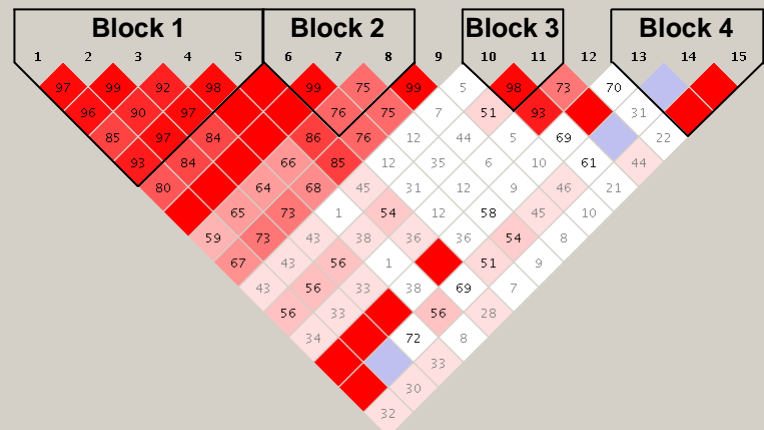
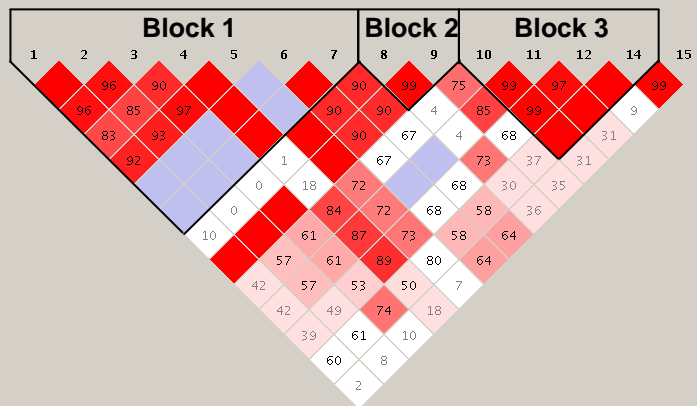
HIS

Supplementary Figure 4



AFA

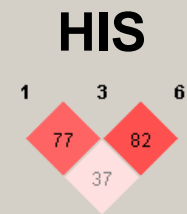
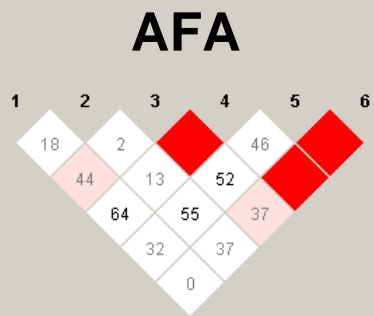
EUA



CHN

HIS

Supplementary Figure 5



SUPPLEMENTARY FIGURE LEGENDS

Supplementary Figure 1. ACE, AGT, AGTR1, and AGTR2 SNPs. SNPs genotyped in ACE, AGT, AGTR1, and AGTR2 cover 23kb, 44kb, 52kb, and 8kb, respectively. Further details on these SNPs and the haplotype blocks can be found in Supplementary Table 2 and Supplementary Figures 2-5.

Supplementary Figure 2. *ACE* SNPs, D' and haplotype block structure for the four racial/ethnic groups.

Supplementary Figure 3. *AGT* SNPs, D' and haplotype block structure for the four racial/ethnic groups.

Supplementary Figure 4. *AGTR1* SNPs, D' and haplotype block structure for the four racial/ethnic groups.

Supplementary Figure 5. *AGTR2* SNPs and D' for the four racial/ethnic groups.