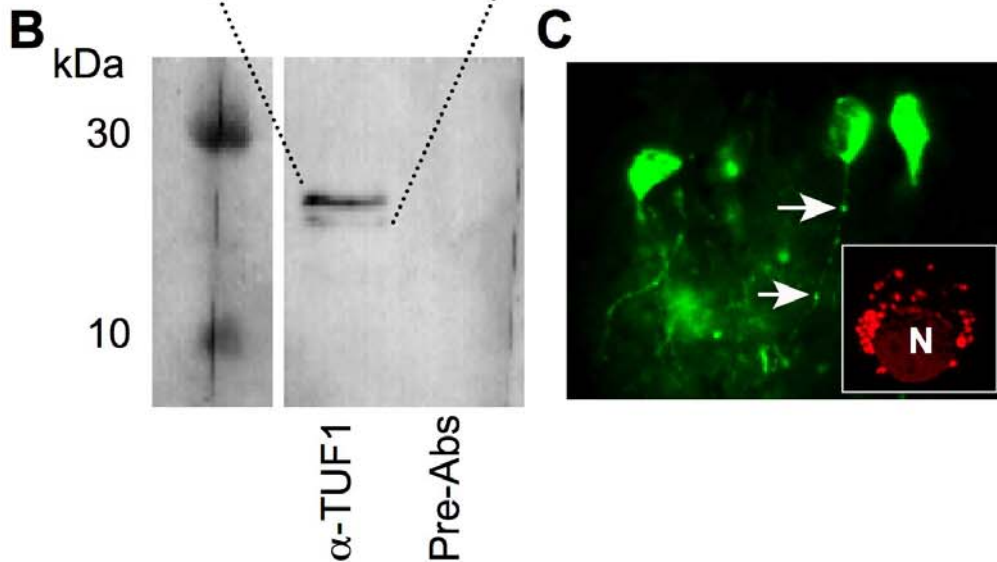
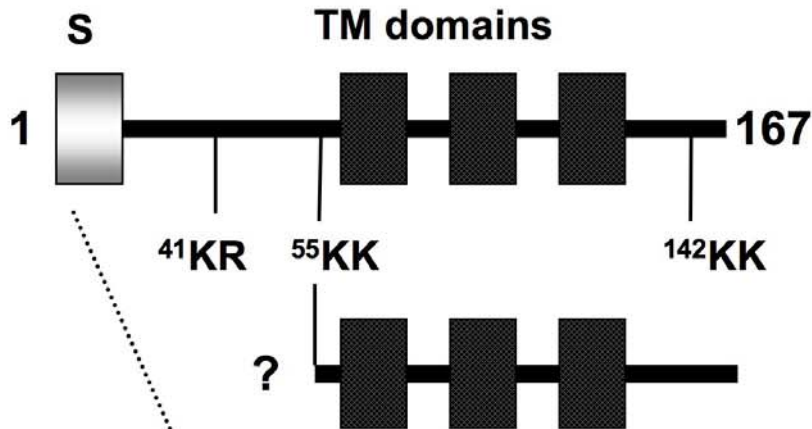


**A***tmem35*: GI:37589956

**1**MAS**PRTIT**IMALSVALGLFFVFMGTIKLTPRLSKDA  
 YSEM**KRAYKSYVRAL***PLLKK*MGINSILLRKSIGALE  
 VACGIVMTLVPGRPKDVANFFLLLLVLAVLFFHQLV  
 GDPLKRYAHALVFGILLTCRLLIARKPEDRSSE**KKA**  
 LPESAEEQPSLYEKAPQGGKVKVS<sup>167</sup>

mTUF1 (predicted) ~18.4 KD:



Supplemental Figure 1: TUF1/*tmem35* protein. A. Mouse polypeptide sequence showing potential proconvertase cleavage sites (Bold letters), TUF1<sup>43-54</sup> (Italicized letters), antigenic peptide (Underlined letters). B. Western blots showing TUF1 full-length (Top) and cleaved (Bottom) peptides in protein isolated from the whole adrenal (B). C. VMH neurons immunoreactive for TUF1 showing TUF1 in vesicles (arrows). Inset shows COS7 cell expressing TUF1-RFP (red fluorescence protein) with the nucleus indicated (N) and tagged TUF1 (red) in vesicles.