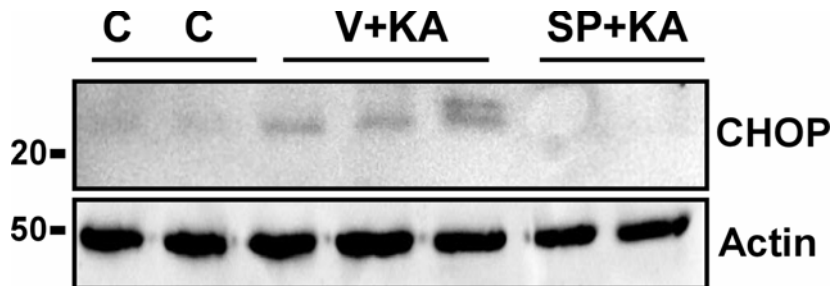


## Supplementary data Figure 1

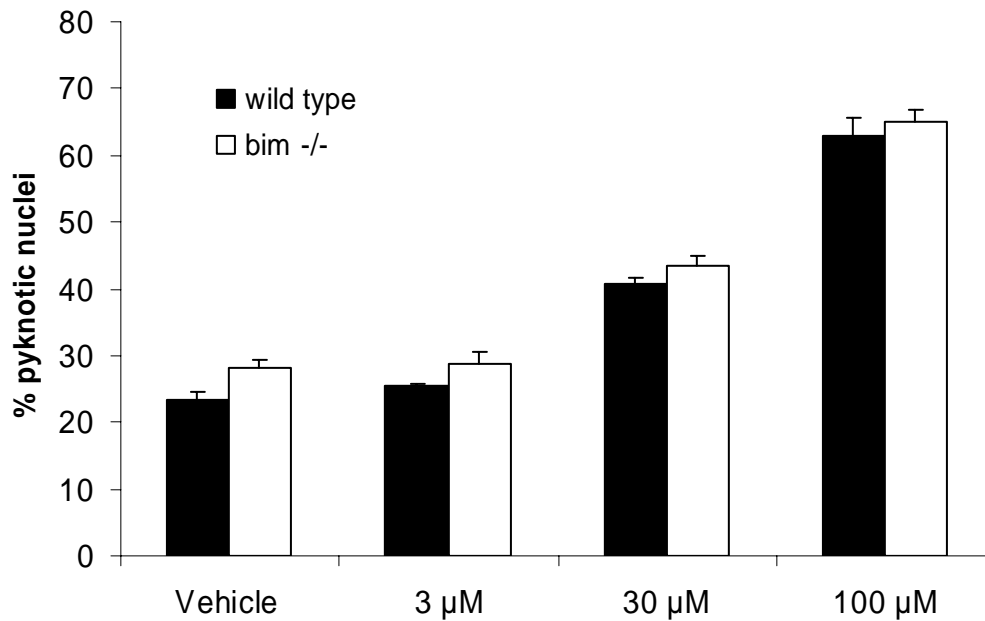
SP600125 inhibits CHOP induction following *status epilepticus*



Representative Western blot ( $n = 1$  per lane) showing CHOP expression at 24 h in mouse hippocampus. CHOP is absent in non-seizure control (C) mice which received intracerebroventricular vehicle (10 % DMSO) followed by intra-amygdala KA. CHOP was expressed in hippocampus from all mice given intracerebroventricular vehicle followed by intra-amygdala KA to induce *status epilepticus* (V + KA). In contrast, CHOP was not induced in KA-treated seizure mice given the JNK inhibitor SP600125 (SP + KA). Actin is included as a guide to equal protein loading.

## Supplementary data Figure 2

Cortical neurons from Bim-deficient mice are not protected against KA toxicity *in vitro*



Graph summarizing counts at 24 h of pyknotic cortical neurons cultured from E16-18 wild-type and Bim-deficient embryos treated with the indicated doses of KA ( $n = 3$  per group). Treatment of cultures with 30  $\mu\text{M}$  and 100  $\mu\text{M}$  KA induced significant cell death in both groups (ANOVA with *post hoc* tukey,  $p < 0.05$  versus vehicle). There was no significant difference between Bim-deficient and wild-type cortical neurons for cell death at any KA dose.