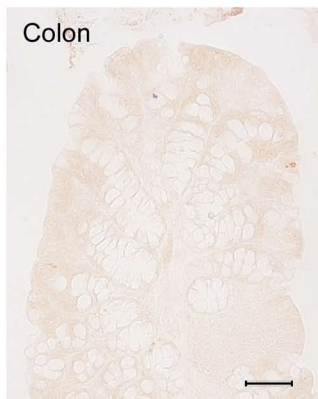
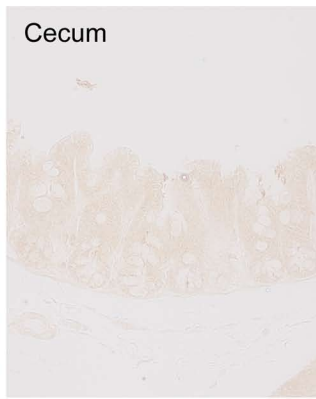
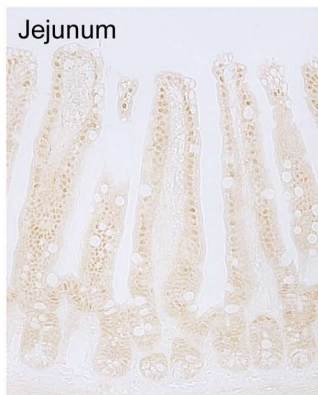
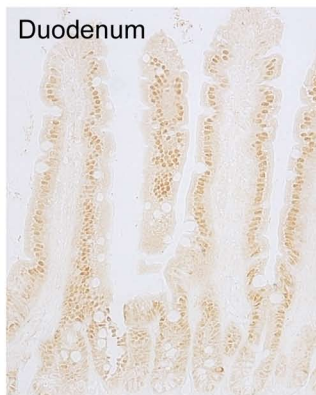
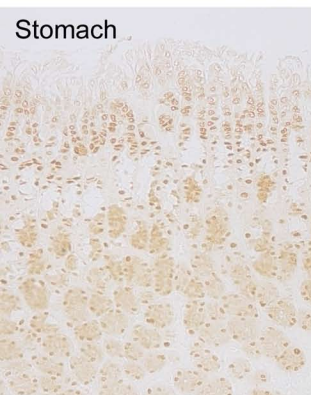
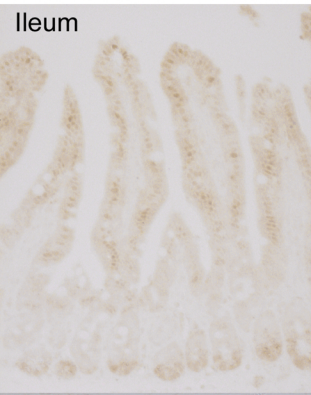
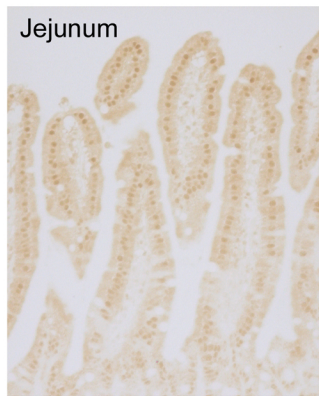
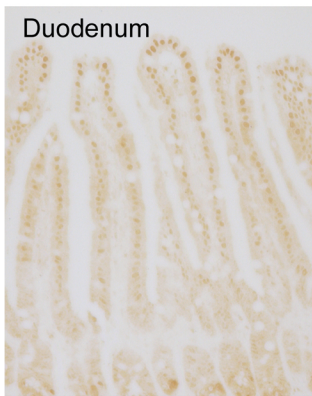
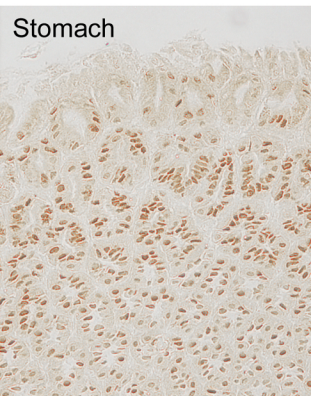


Supplemental data 1. Distribution of GATA-4 in the gastrointestinal tract of mice



## Supplemental data 2. Distribution of SP1 in the gastrointestinal tract of mice



1

2 Supplemental data -- Figure legends

3

4 1. Distribution of GATA-4 in the gastrointestinal tract of mice. GATA-4 was detected by  
5 immunohistochemical staining. Scale bars: 50  $\mu$ M.

6

7 2. Distribution of SP1 in the gastrointestinal tract of mice. SP1 was detected by  
8 immunohistochemical staining. Scale bars: 50  $\mu$ M.

9