

Legends to supplemental figures

Figure S1. Representative EIC of the $[M-H]^-$ detected for FFA with an odd CN, such as FFA 15:1, FFA 15:0, FFA 17:1, and FFA 17:0 separated by RR-RP-HPLC and detected with -ESI/TOF-MS.

Figure S2. Representative EIC of the $[M-H]^-$ detected for FFA 18:2 by RR-RP-HPLC and -ESI/TOF-MS in sebum from an individual donor (a) and EIC of authentic linoleic acid (b) analyzed in the same conditions as sebum.

Figure S3. Within class distribution of mono- (a) and di- (d) unsaturated WE identified in sebum. Data were reported as mean \pm SD calculated following RR-RP-HPLC/TOF-MS analysis of sebum from the 12 donors. Full and dashed lines represent WE with an even and an odd CN, respectively.

Figure S4. Within class distribution of FFA in sebum according to their CN. FFA were subgrouped by their DB number. Data were reported as mean \pm SD calculated for the 12 sebum donors. Full and dashed lines represented FFA with an even and an odd CN, respectively.

Figure S1

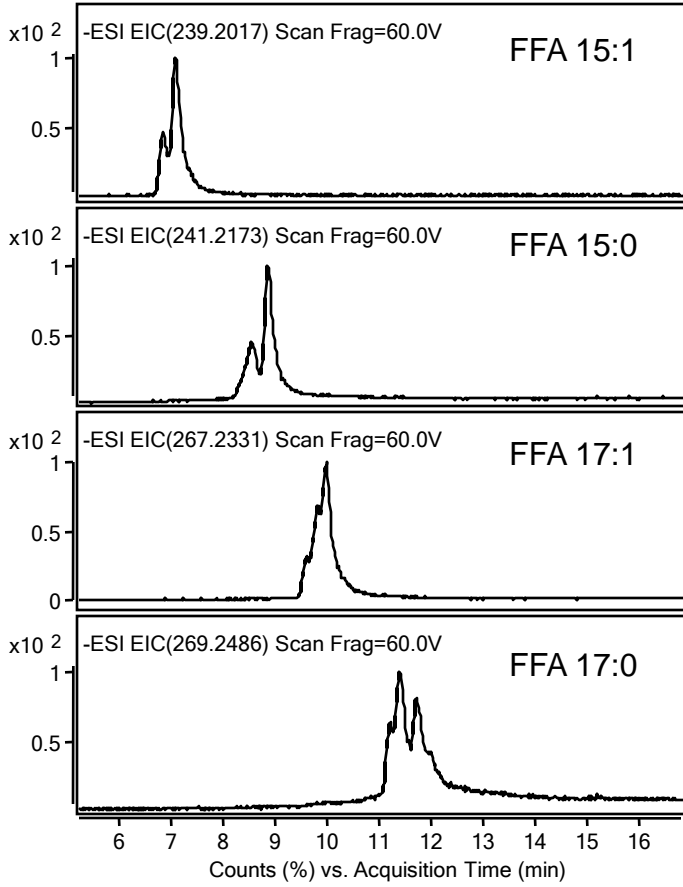


Figure S2

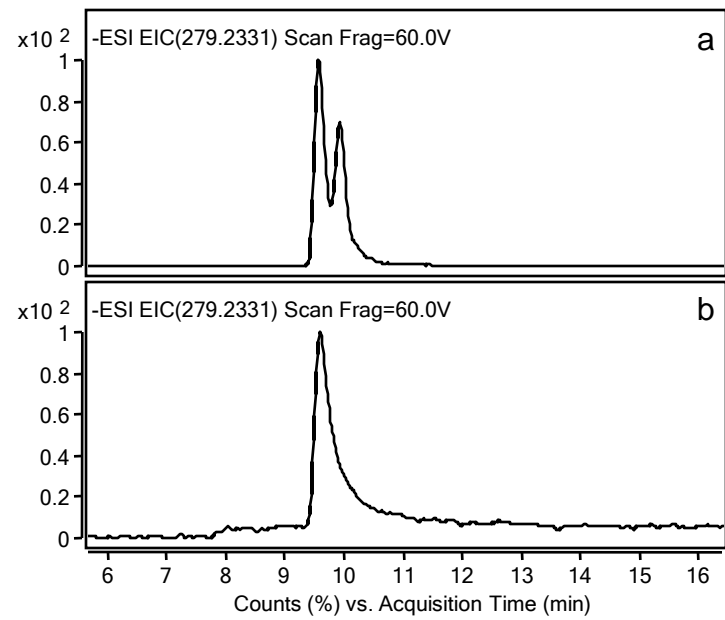


Figure S3

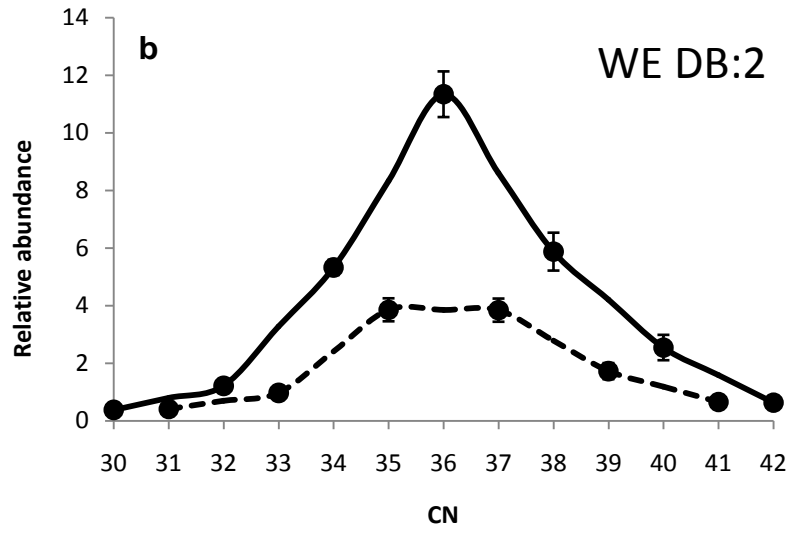
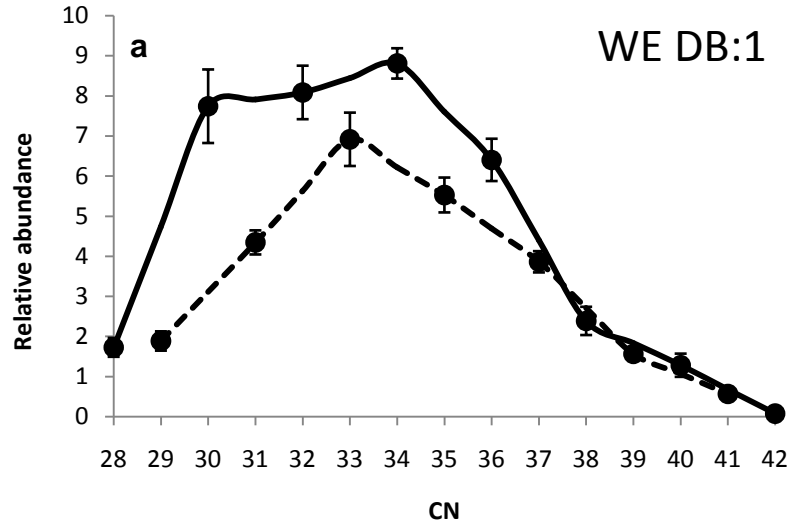


Figure S4

