

Figure S1. Histology sections showing iron deposition in various tissues (A) Iron deposition (Pearl's reaction for iron) in liver, spleen, heart and pancreas of placebo animals (upper row) or iron dextran treated mice (lower row). (B) Femur sections from placebo and iron overloaded mice show iron not on bone surface but mainly intracellularly in macrophage-like cells.

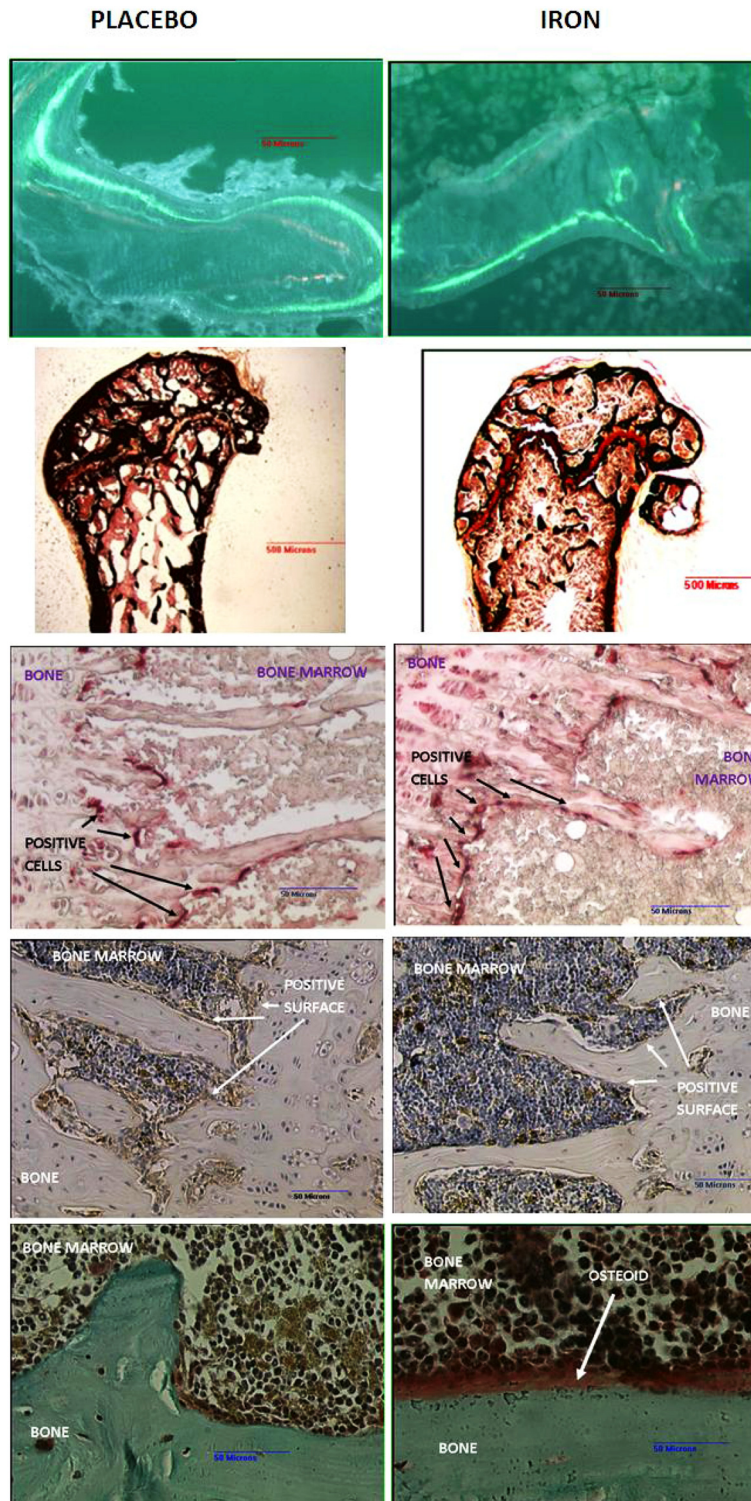


Figure S2. Representative bone sections of placebo and iron treated animals. 1st row: Double label of trabecular bone: Calcein is shown in green, the xylenol stain in orange x 20 magnification. Interlabel width of double labeled regions for calculation of MAR, and double and single label perimeters for calculation of BFR were measured. 2nd row: Van Kossa stain for measurement of BV/TV x1 magnification. 3rd row: Histochemical demonstration of enzymatic TRAP localization in osteoclasts. Osteoclasts are identified as large red multinucleated cells on BS. Increased number osteoclasts per BS was observed in iron treated animals x 20 magnification. 4th row: Immunostaining of osteoblasts for procollagen type I. Osteoblasts are shown as cuboid golden-brown cells on the bone surface x 20 magnification. No differences in osteoblast covered surface (%BS) with iron. 5th row: Goldner's trichrome stain. Osteoid is shown as a band of different color (orange-brown) at the bone surface x 20 magnification. Increased BS covered with osteoid (%BS) is seen in iron treated animals.