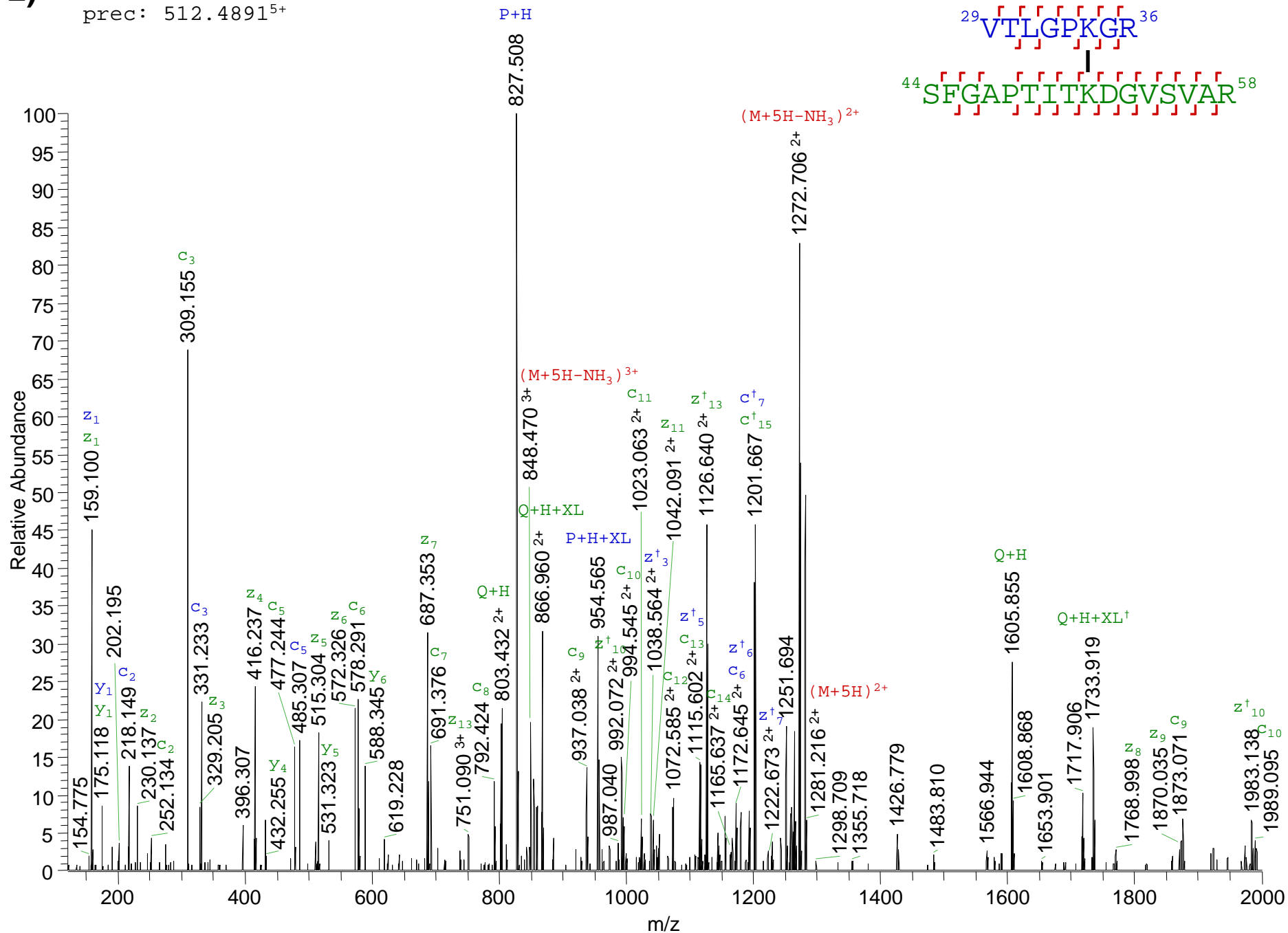


Supplemental Figures:

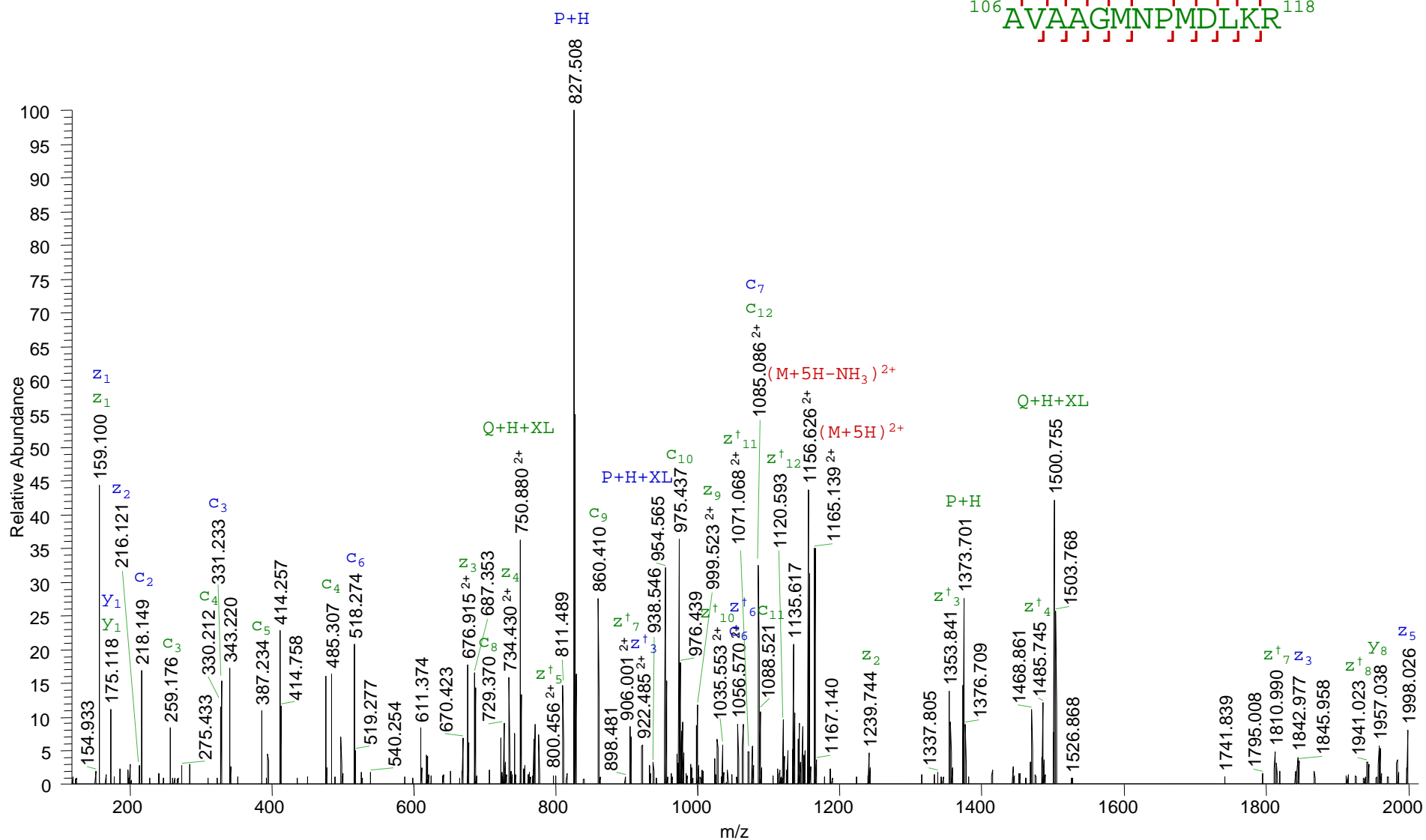
Annotated spectra for crosslinks No. 1-25. Numbers in upper left hand corner refer to the “No.” column on Table 1 and Table 2 in the main text. Dagger: † and double dagger: ‡ symbols indicate that the ion was observed as with one or two additional hydrogen atom transfers. Most product ions which contain the DEB bridge were found as a mixture of these species. Contaminant peaks that are within the precursor ion selection window are marked with an asterisk: *.

2)

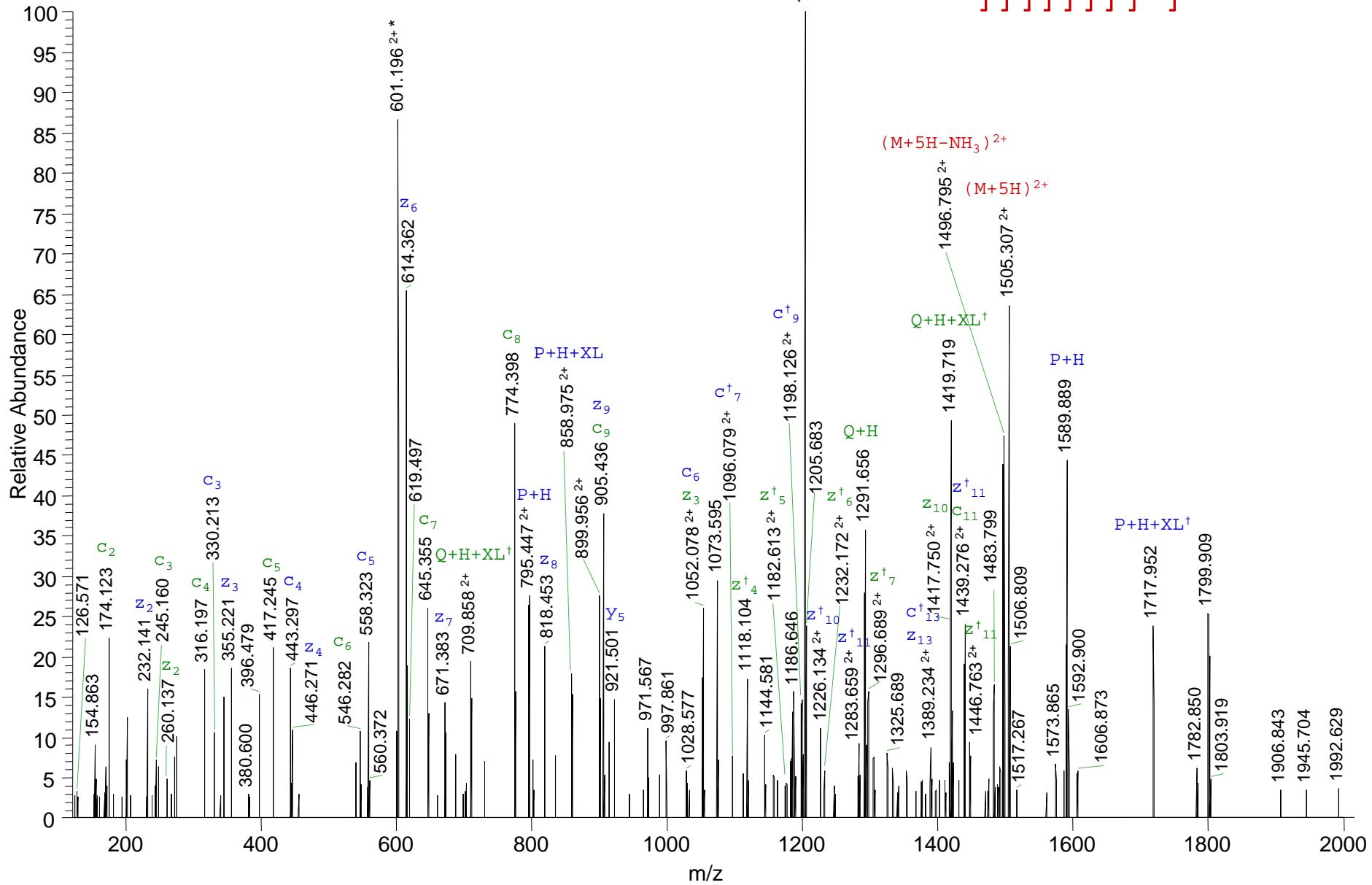
prec: 512.4891⁵⁺

3)

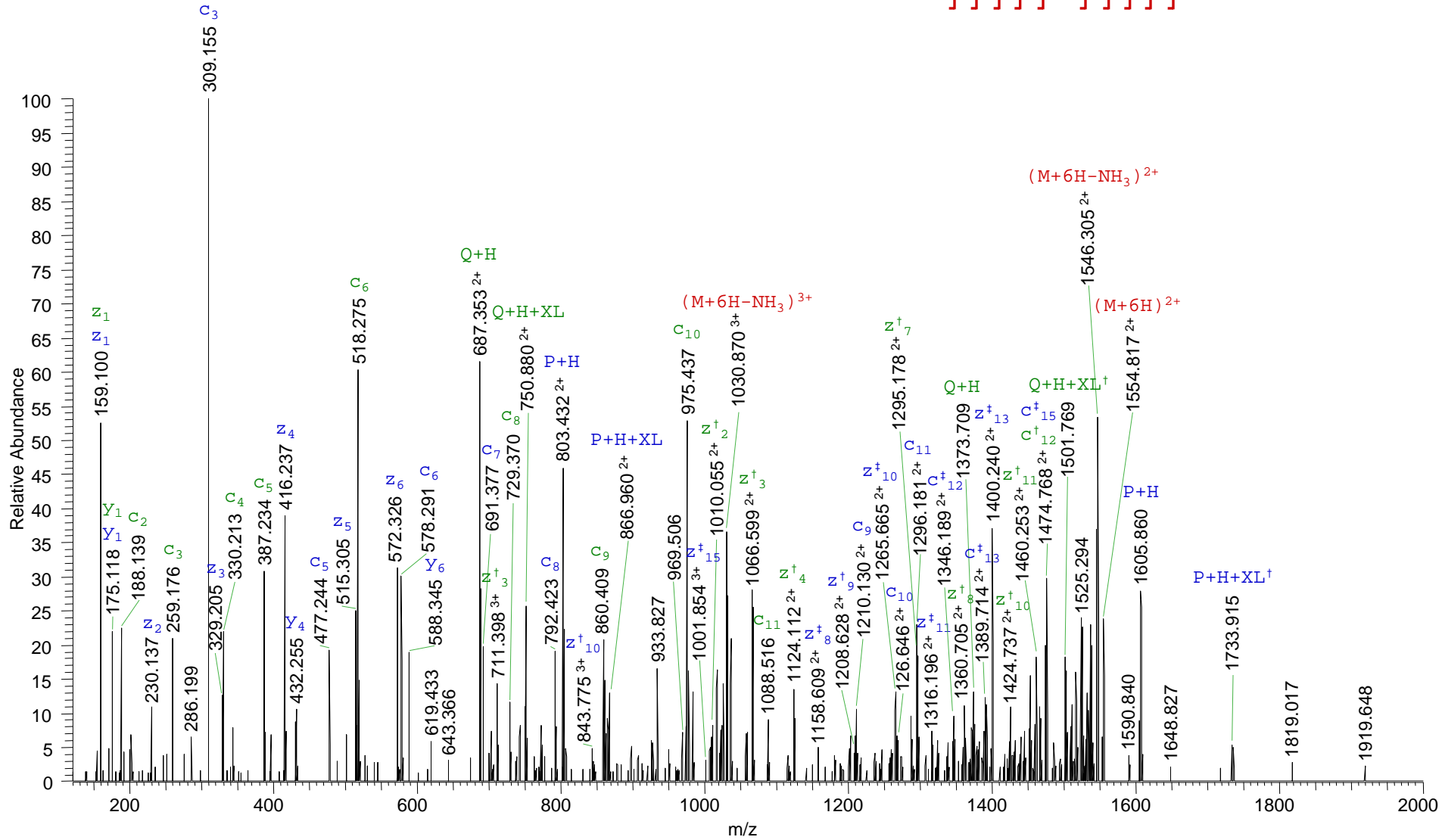
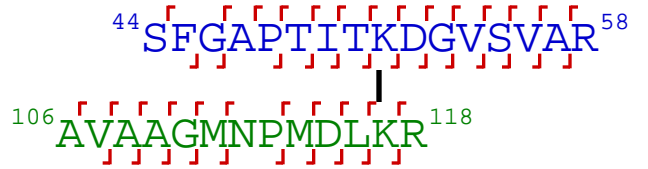
prec: 466.0601⁵⁺



4)

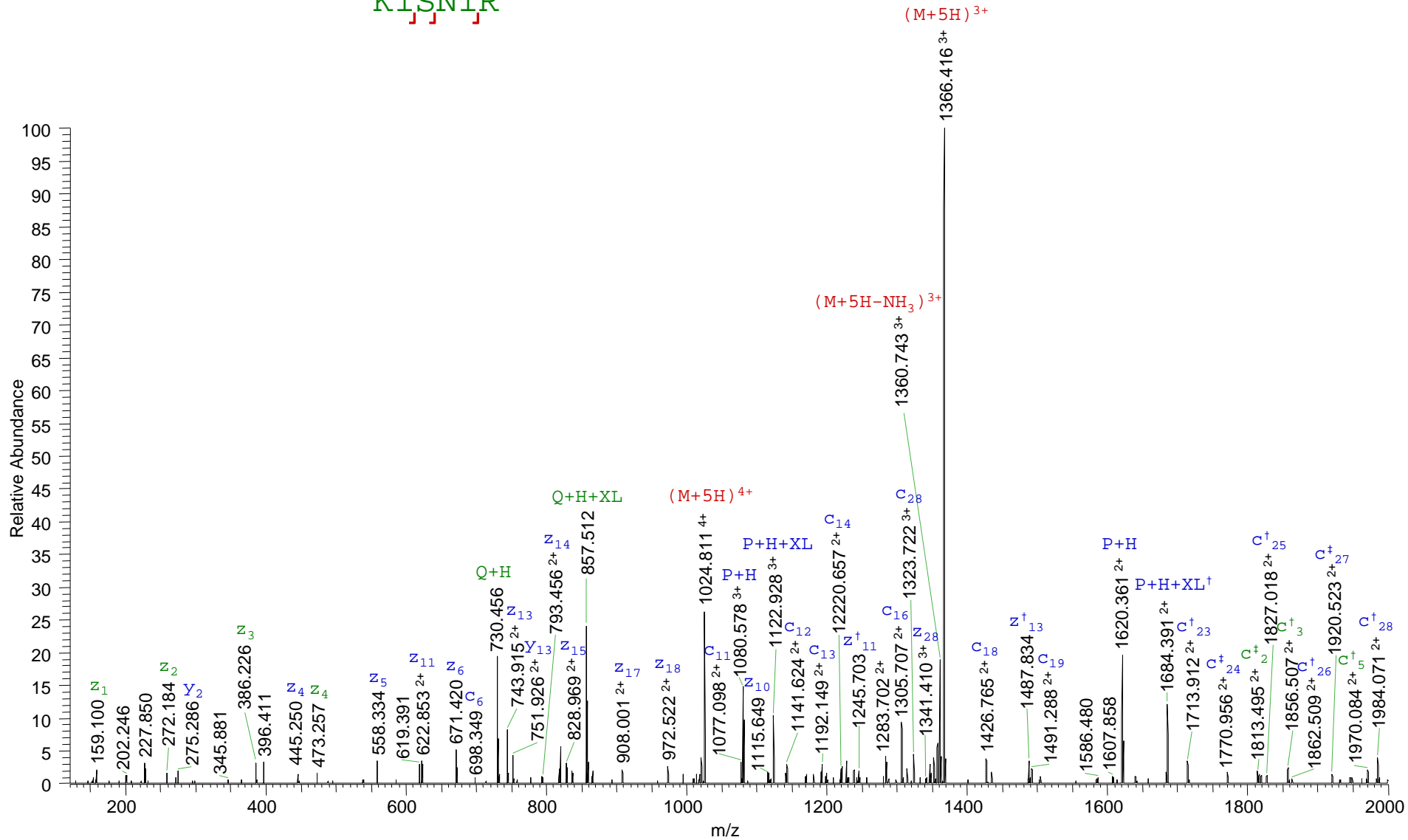
prec: 602.1249⁵⁺

5)

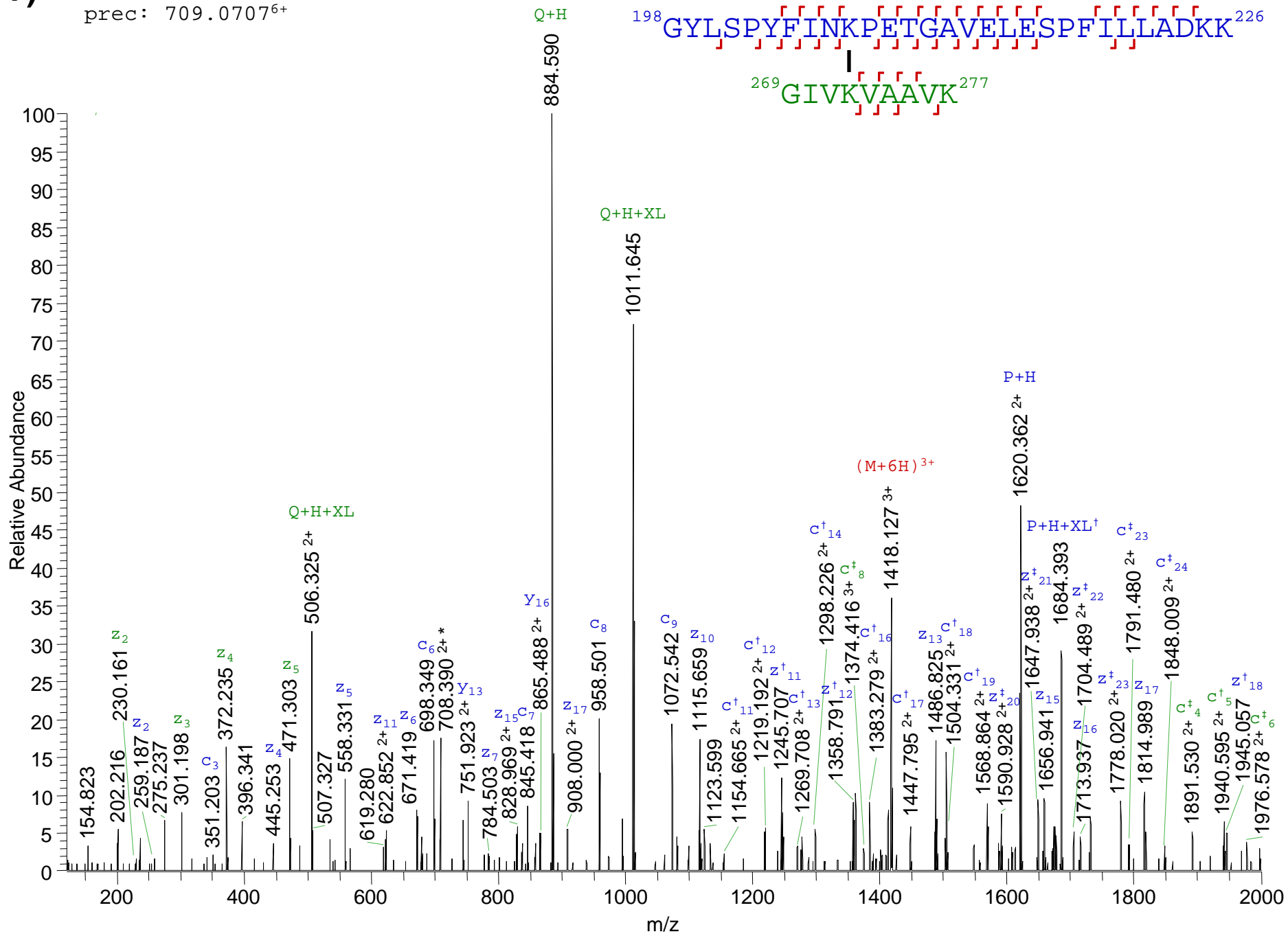
prec: 518.2780⁶⁺

6)

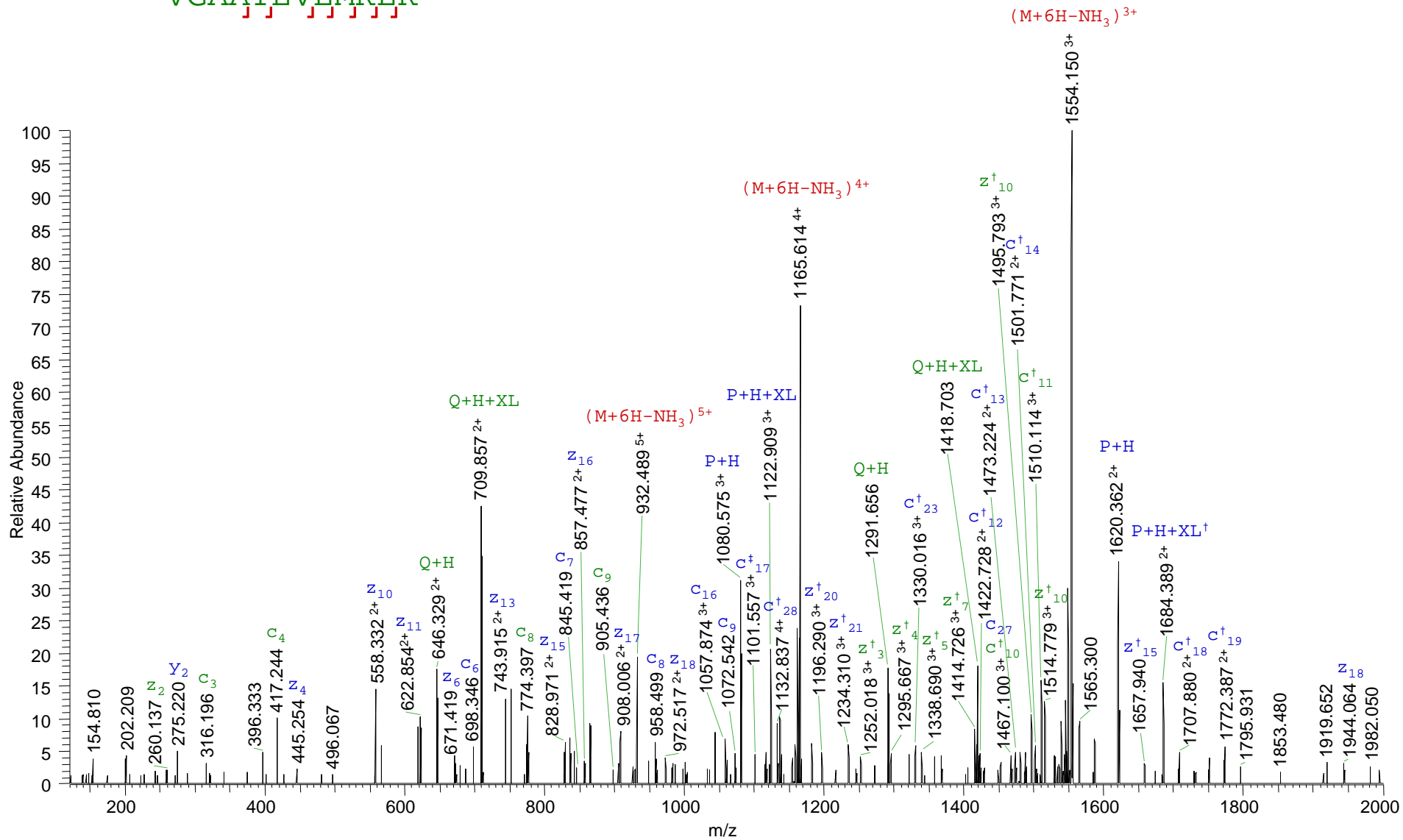
198 [GYLSPYFINKPETGAVELESPFILLADKK] 226
 226 [KISNIR] 231

prec: 819.8527⁵⁺

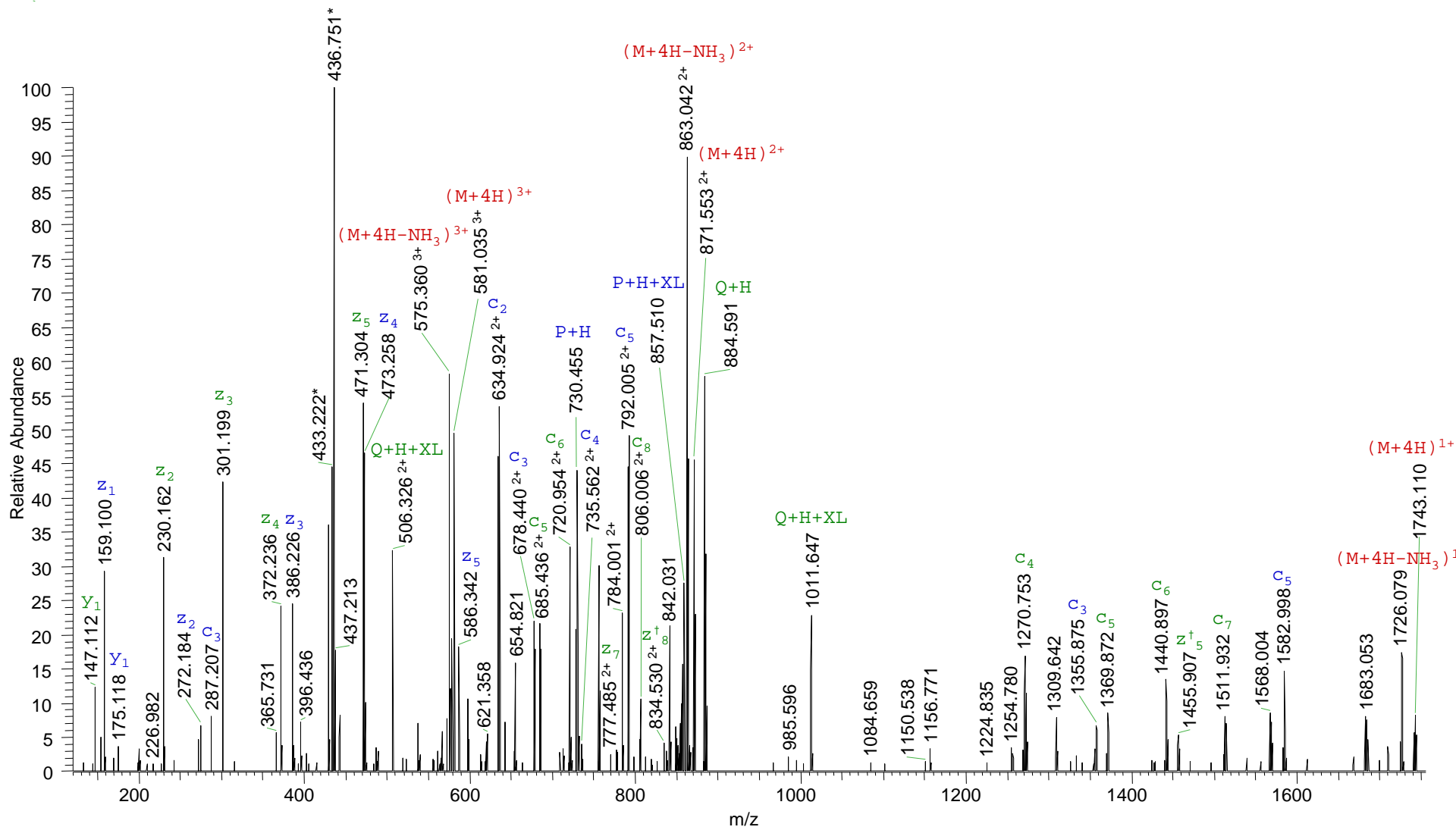
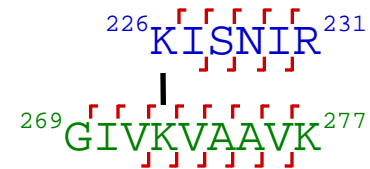
7)

prec: 709.07076⁺

8)

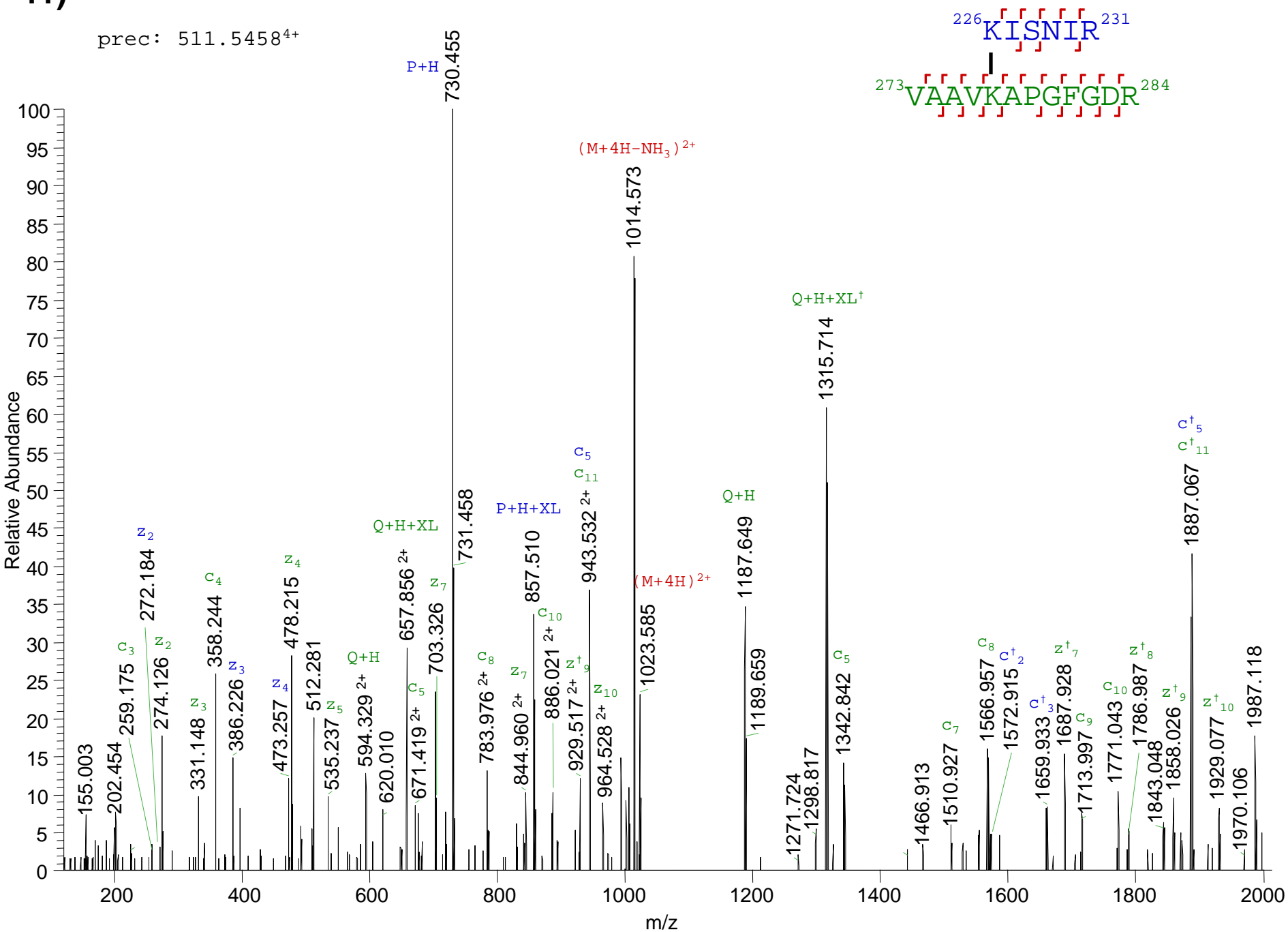
¹⁹⁸GYLSPYFINKPETGAVELESPFILLADKK²²⁶
prec: 776.9112⁶⁺
³⁸⁰VGAATEVEMKEK³⁹²


10)

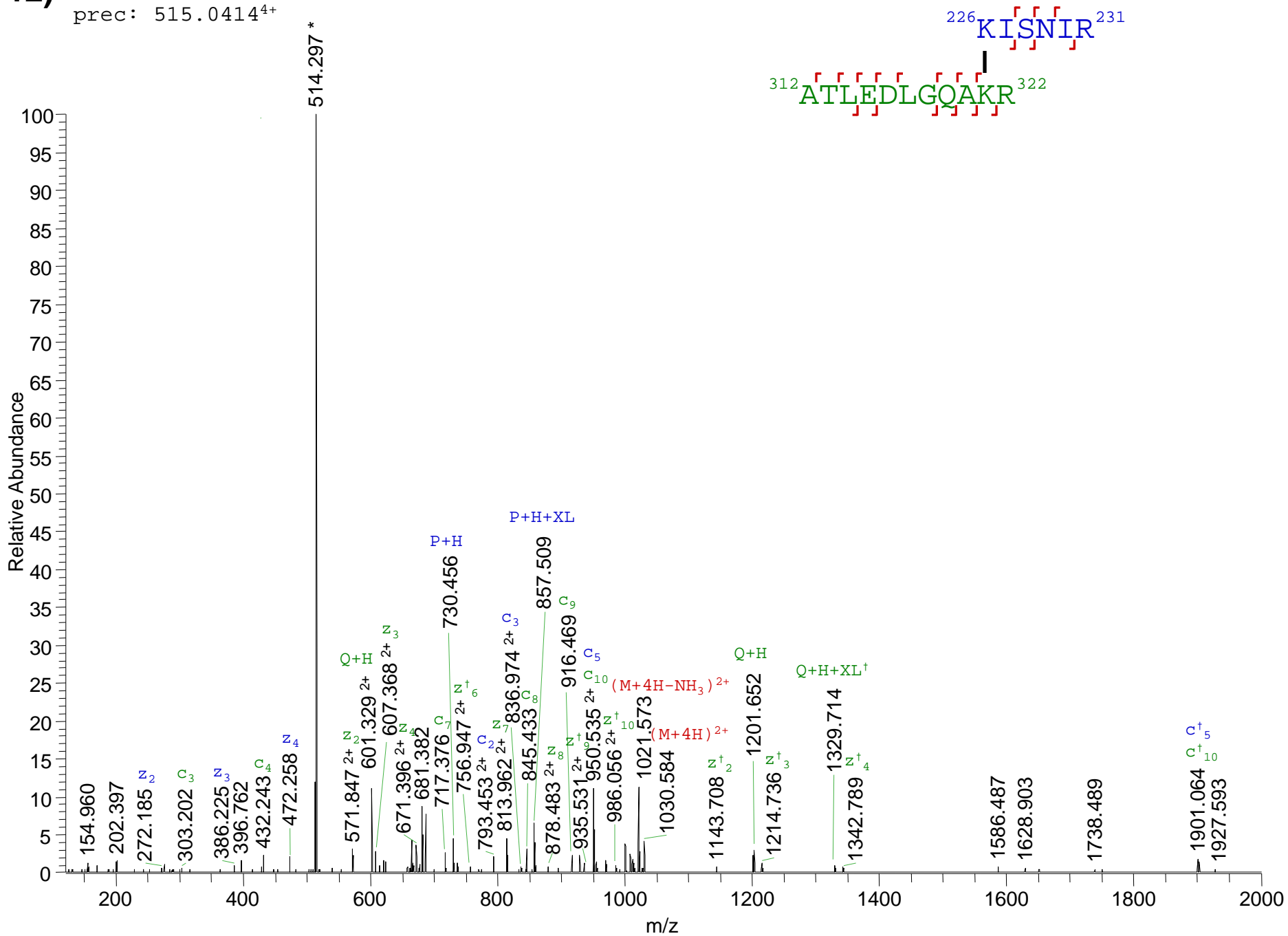
prec: 435.7788⁴⁺

11)

prec: 511.5458⁴⁺

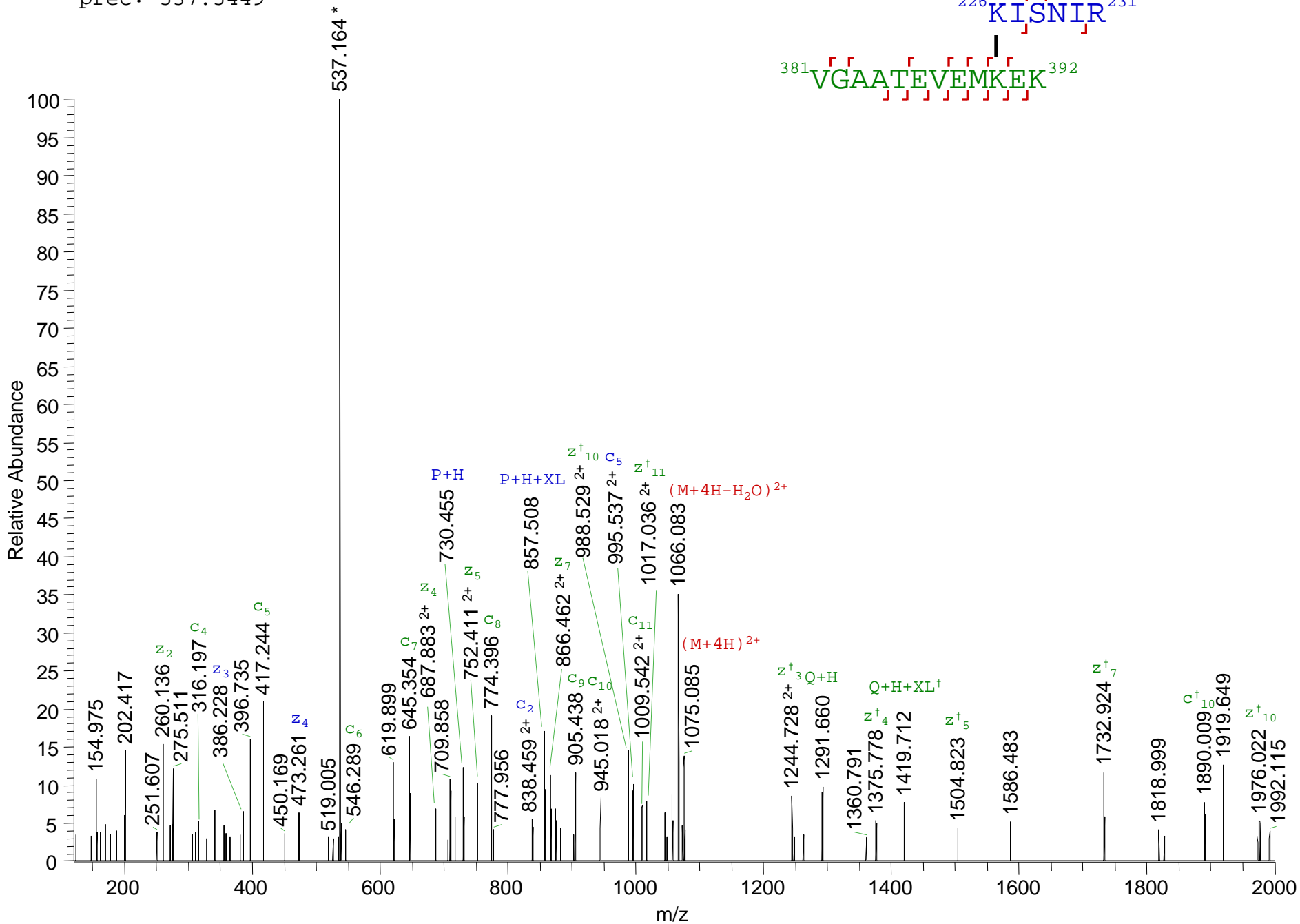


12)

prec: 515.0414⁴⁺

13)

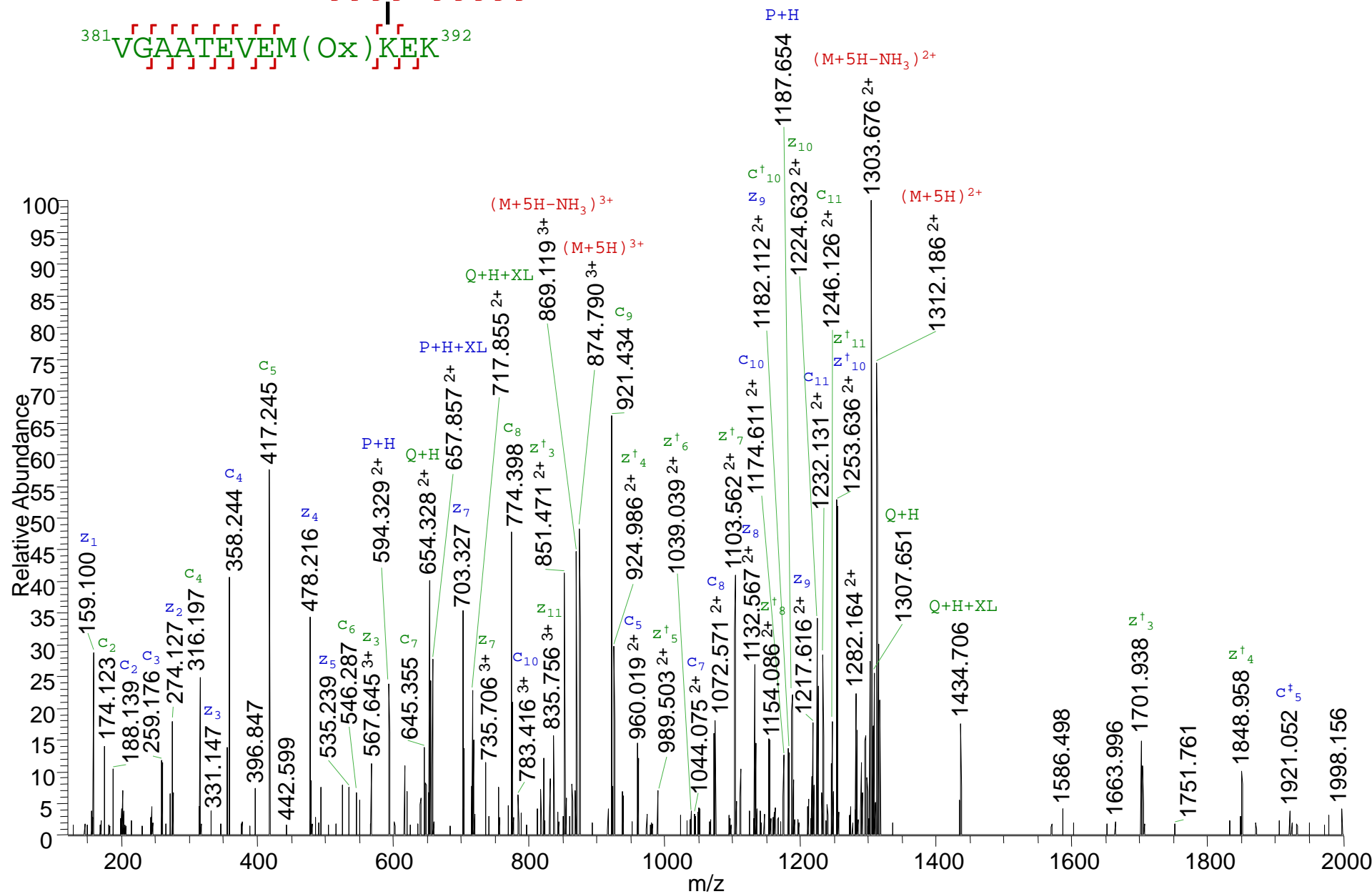
prec: 537.5449⁴⁺



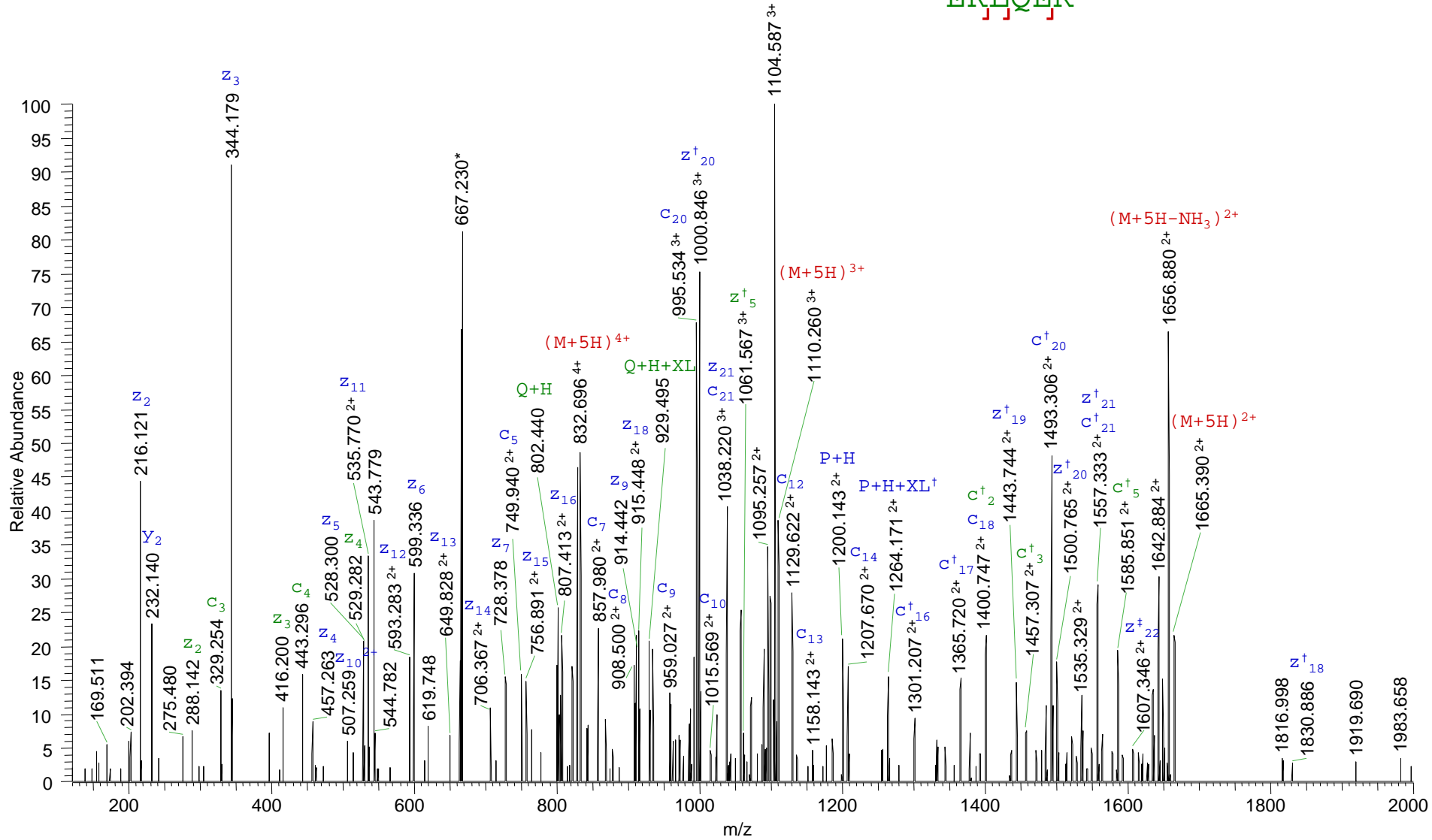
14)

273 VAAVKAPGFGDR 284

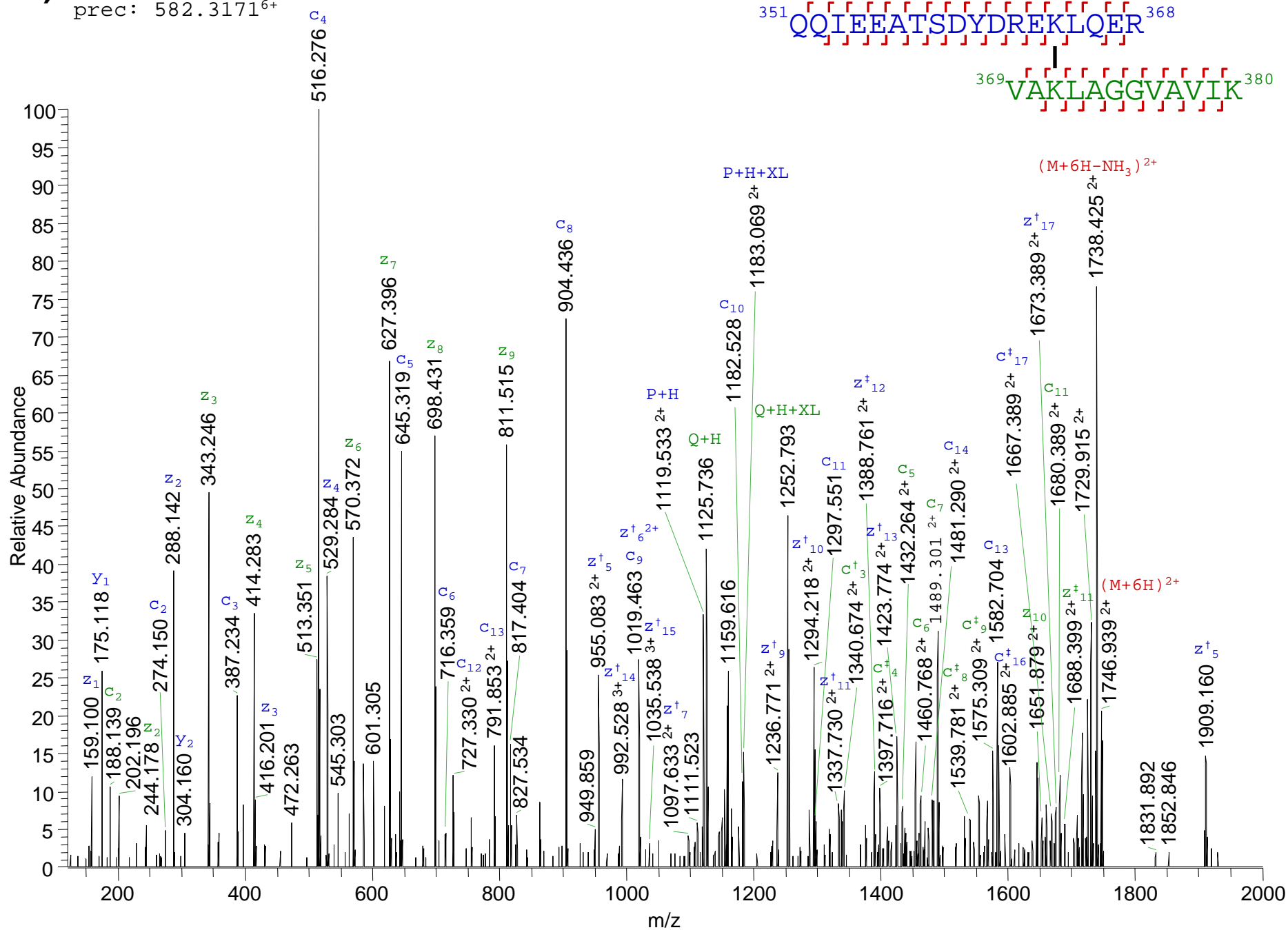
381 VQAATEVEM(Ox)KEK 392

prec: 524.8768⁵⁺

15)

prec: 666.1605⁵⁺

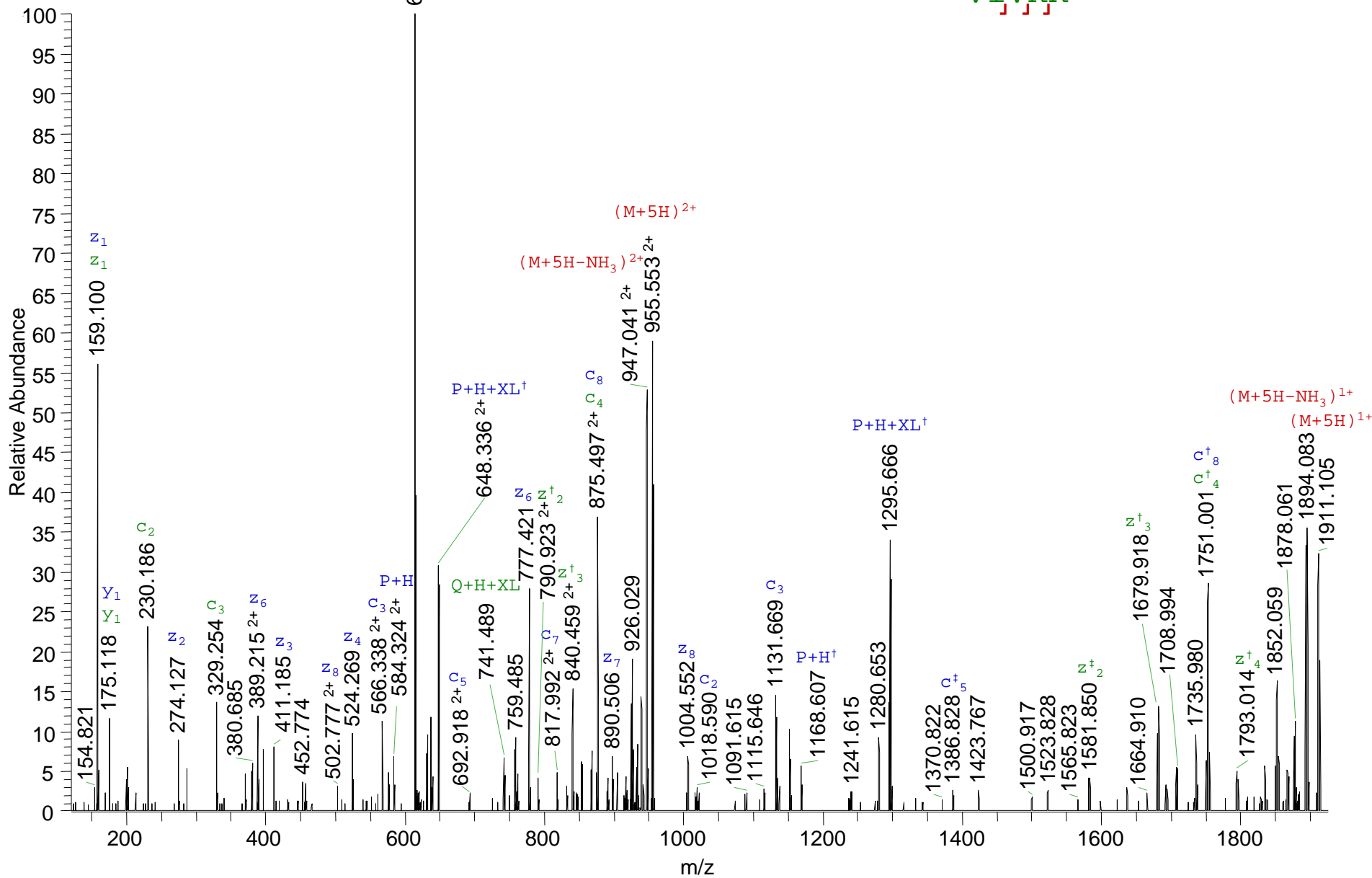
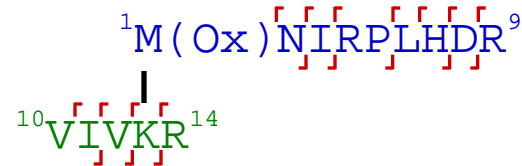
16)

prec: 582.3171⁶⁺

17)

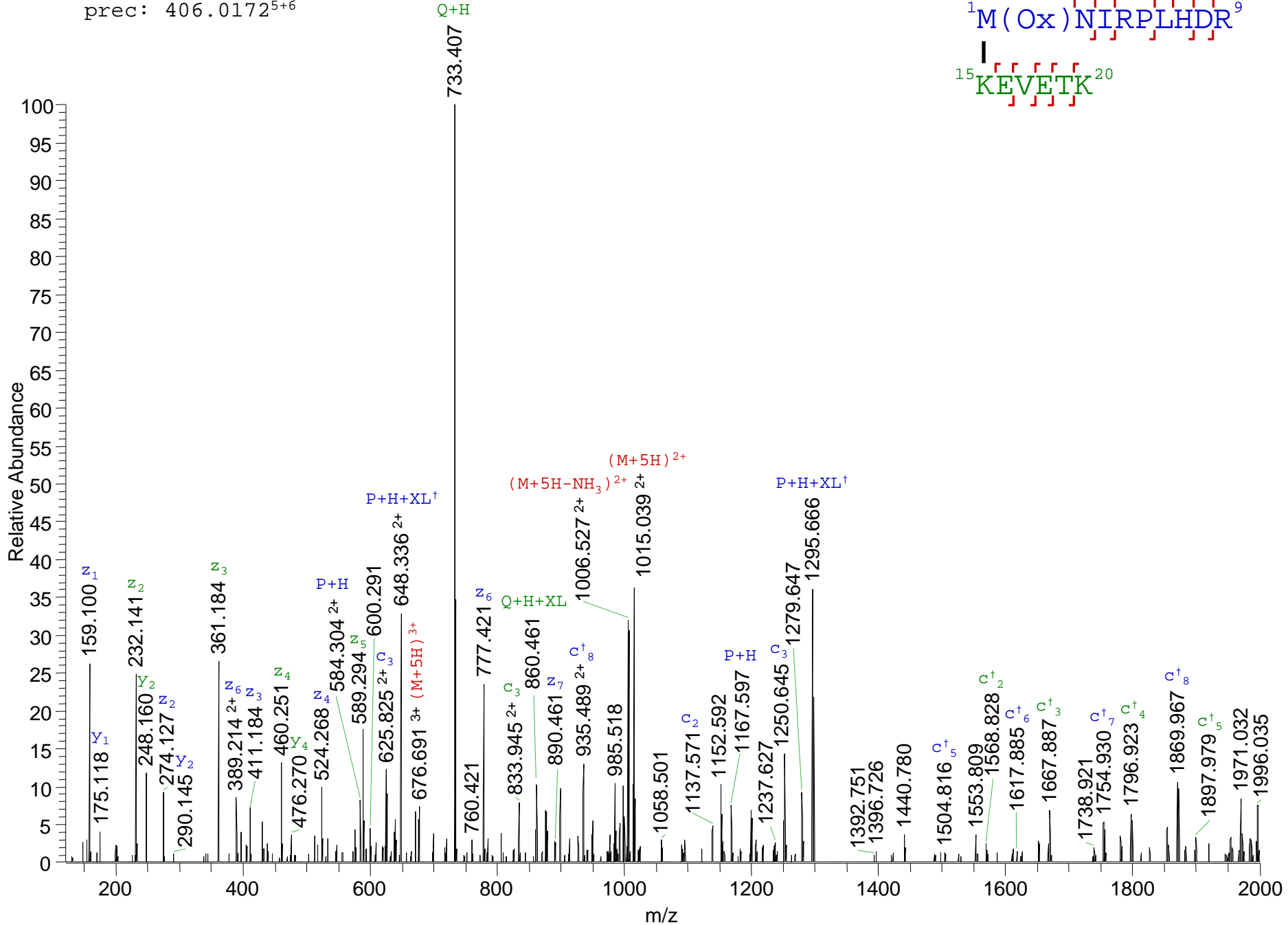
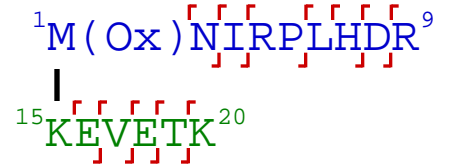
prec: 382.2232⁵⁺

Q+H

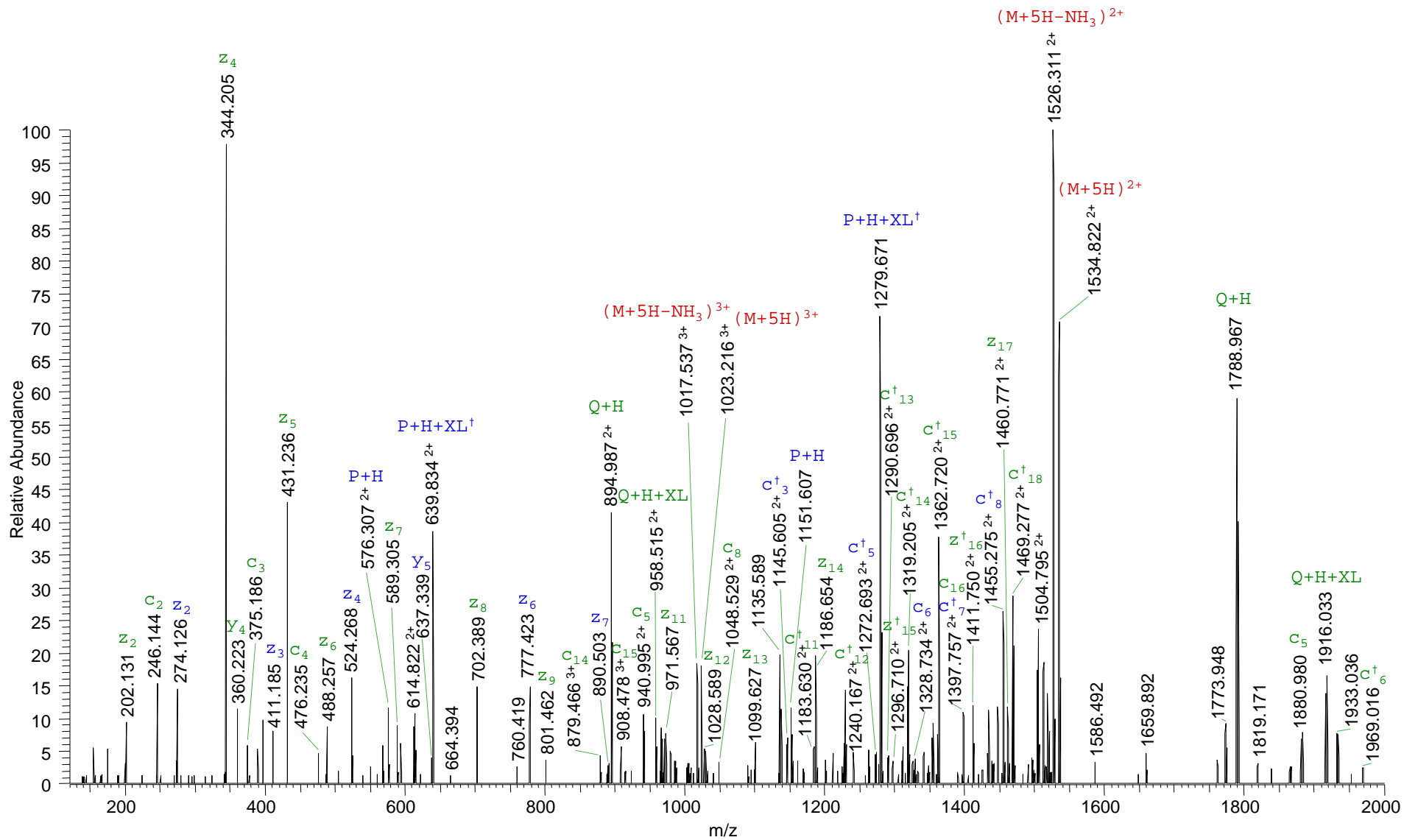
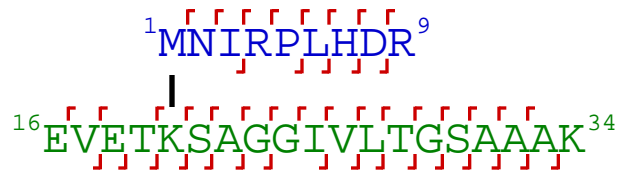


18)

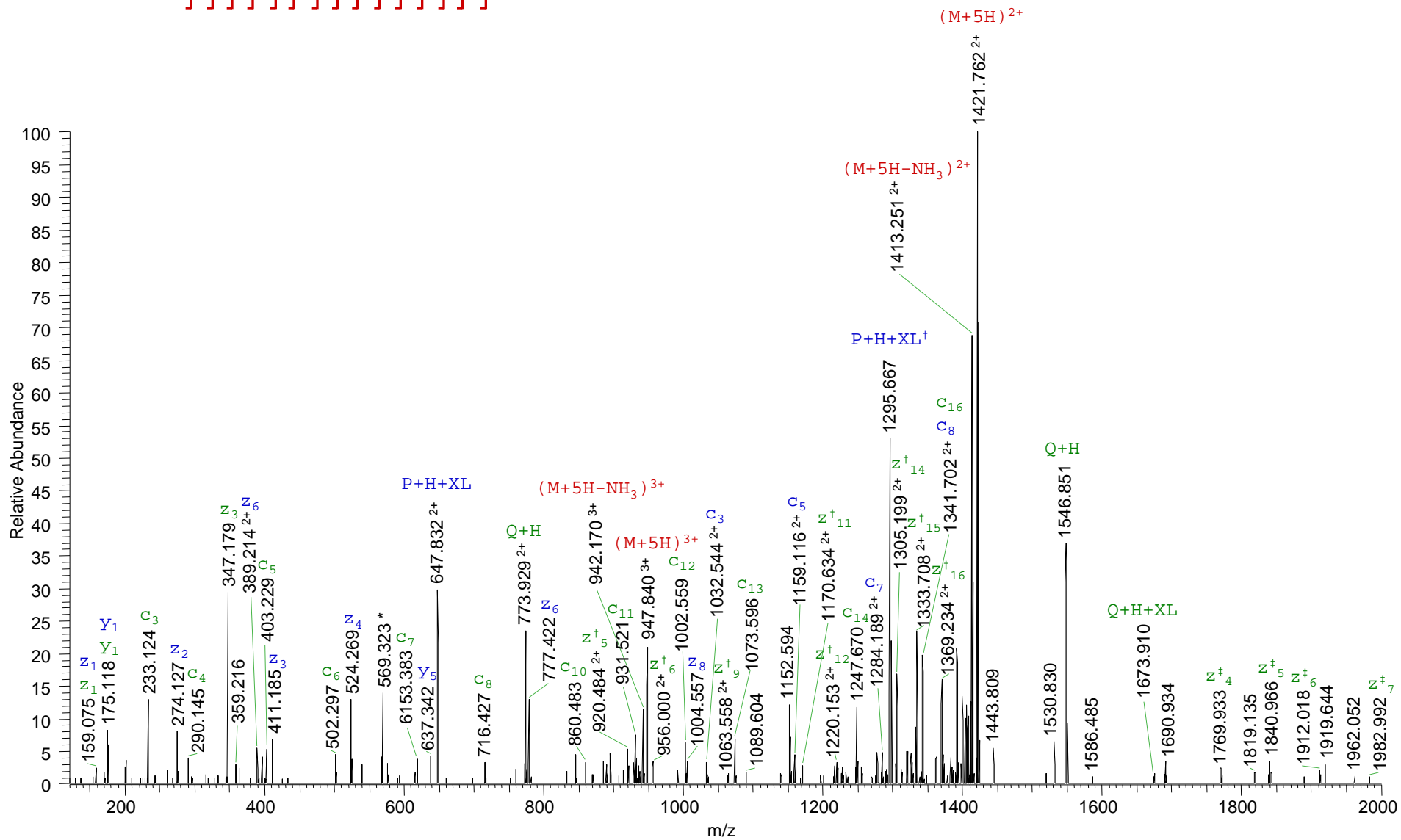
prec: 406.0172⁵⁺⁶



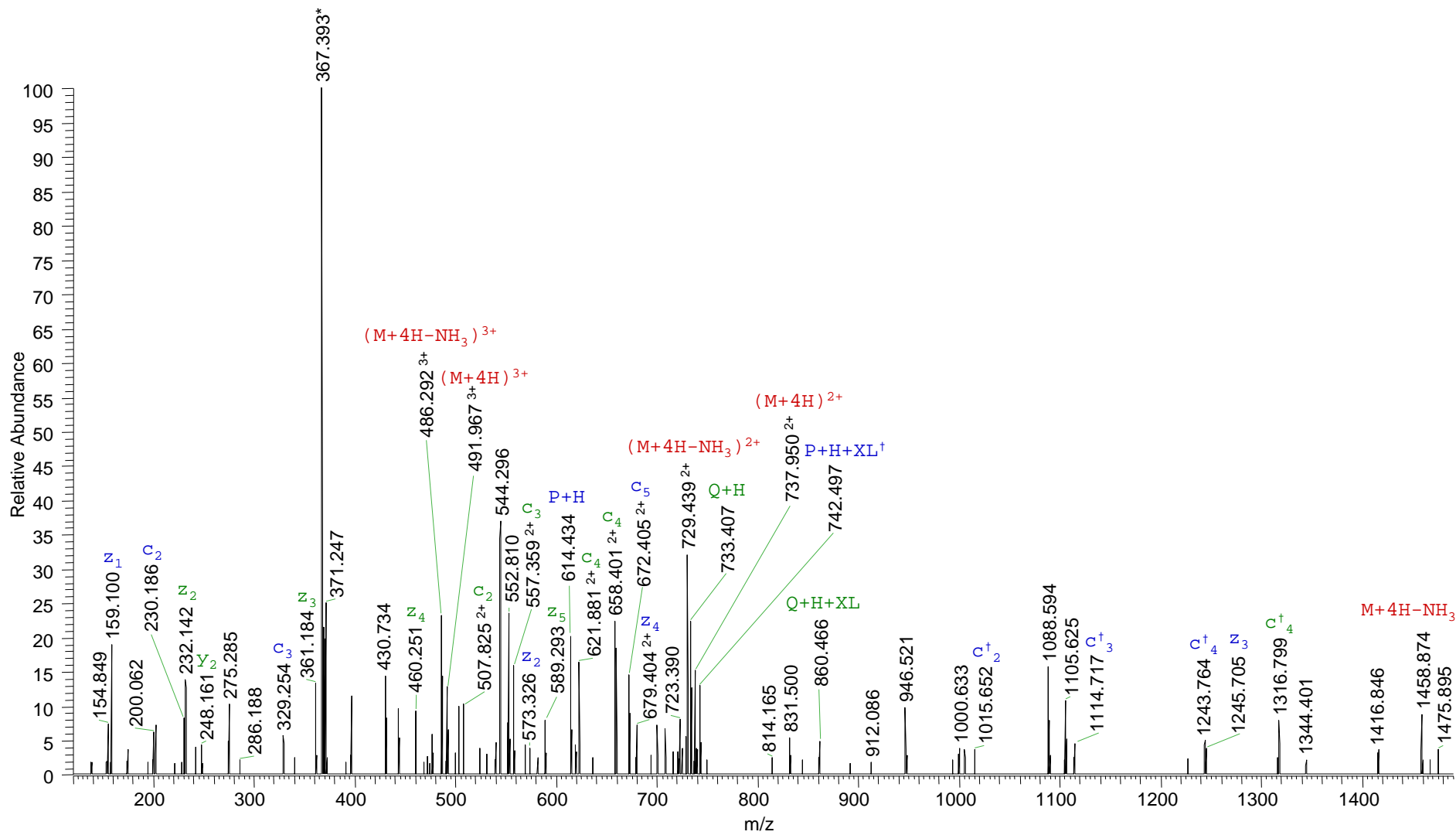
19)

prec: 613.9314⁵⁺

20)

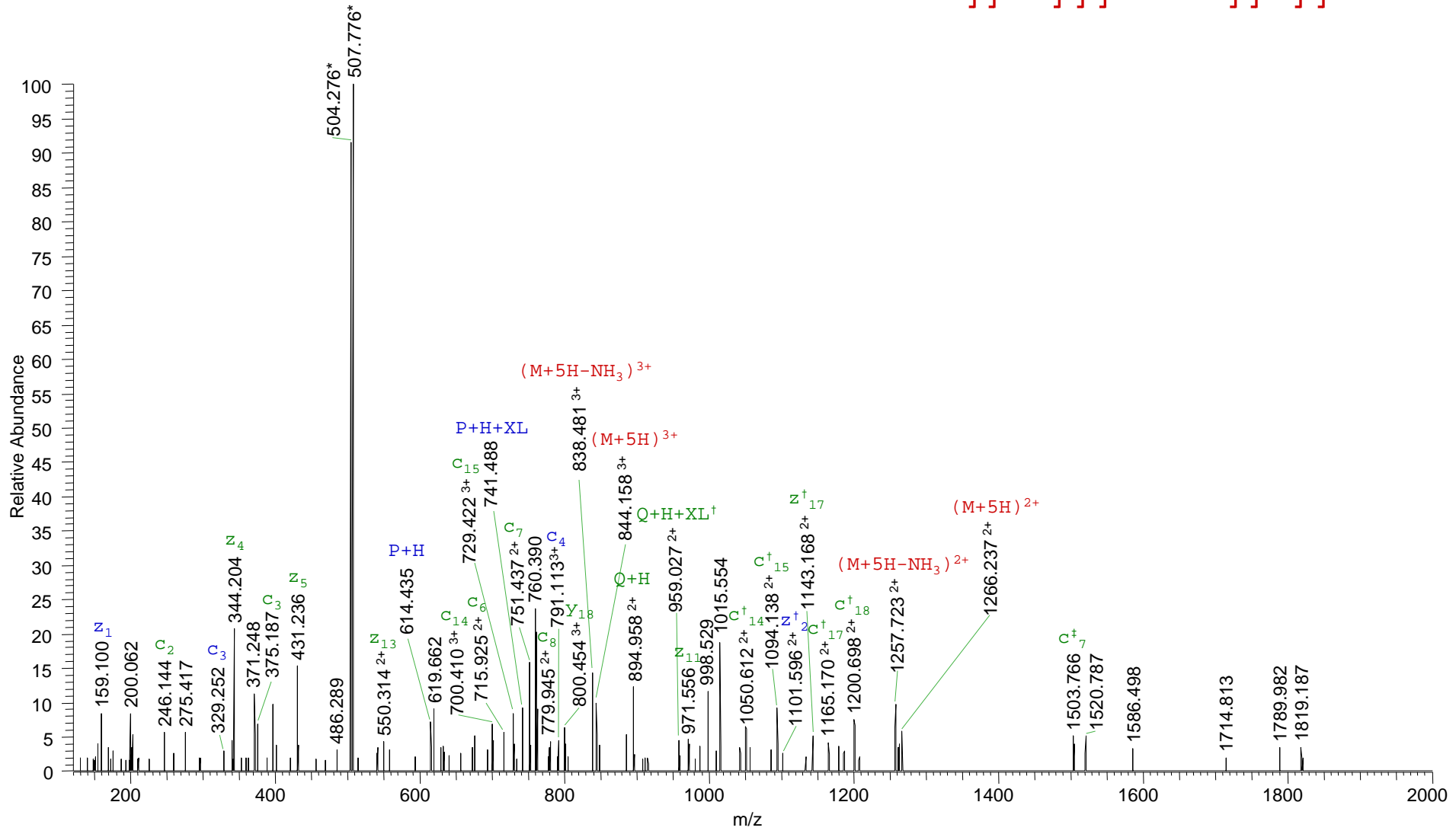
 ${}^1\text{M}(\text{Ox})\text{NIRPLHDR}^9$ prec: 568.7086⁵⁺ ${}^{21}\text{SAGGIVLTGSAAAKSTR}^{37}$ 

21)

prec: 368.9760⁴⁺

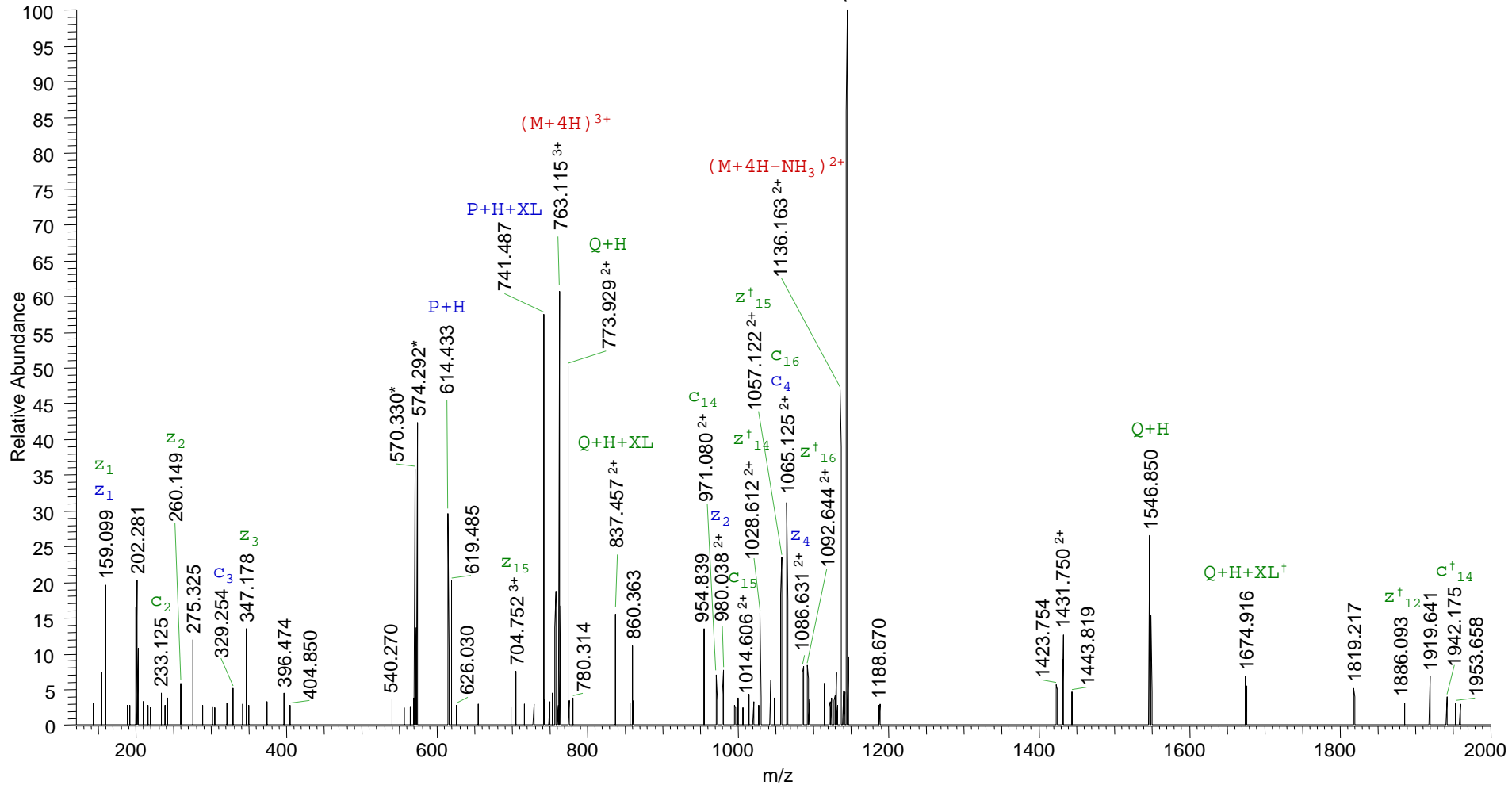
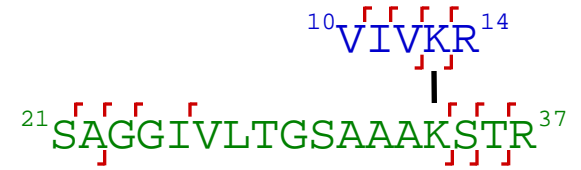
22)

prec: 506.4958⁵⁺



23)

prec: 572.3381⁴⁺

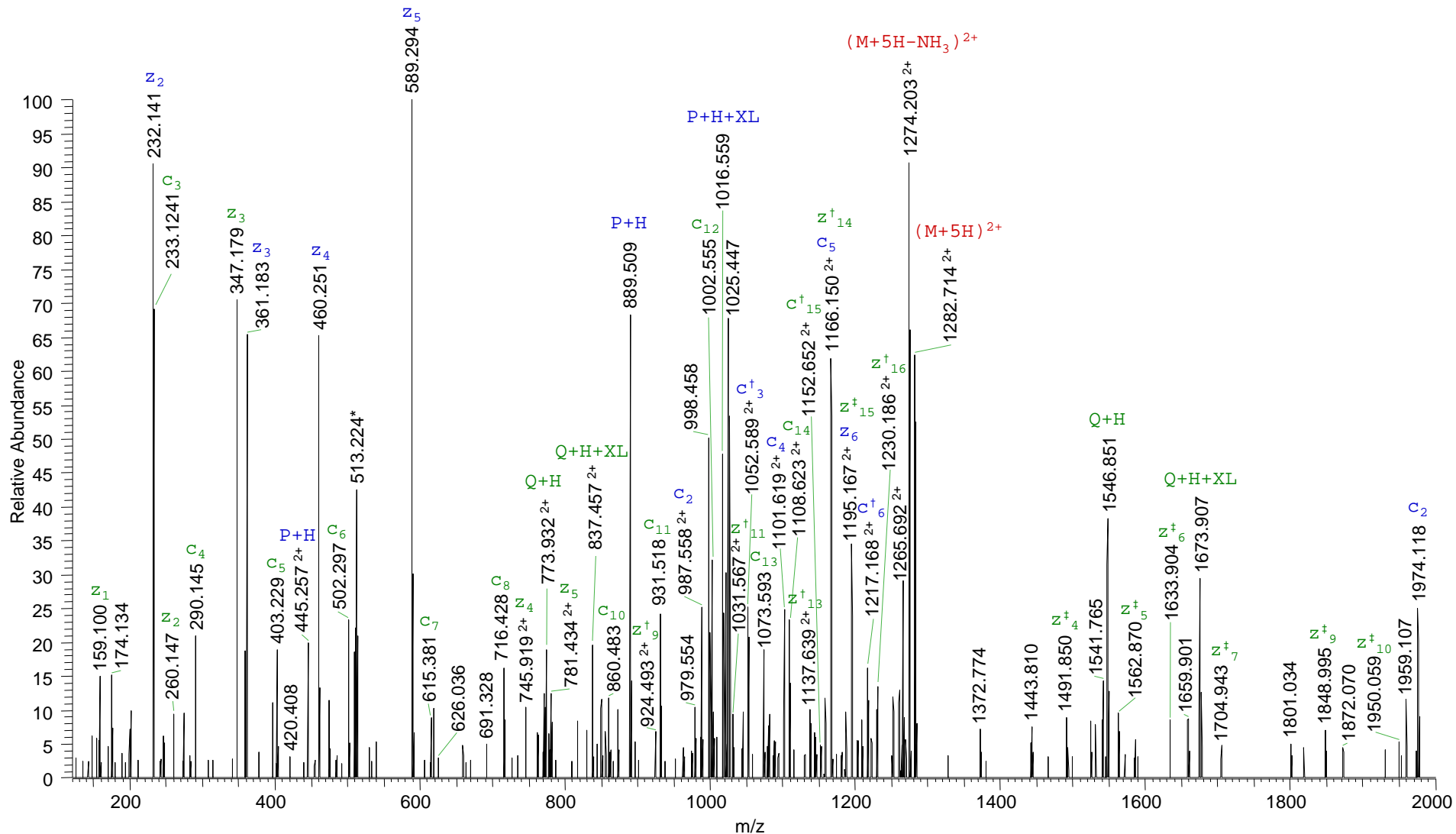


24)

prec: 513.0867⁵⁺⁶

¹⁴RKEVETK²⁰

²¹SAGGIVLTGSAAAKSTR³⁷



25)

prec: 703.1783⁵⁺

(M+5H)³⁺

²¹SAGGIVLTGSAAAKSTR³⁷
⁶¹VGDIVIFNDGYGVKSEK⁷⁷

