

Electronic Supplementary Information (ESI)

**Kinetics of NF- κ B Nucleocytoplasmic Transport Probed by Single-cell
Screening without Imaging**

*Jun Wang, Bei Fei, Yihong Zhan, Robert L. Geahlen & Chang Lu**

Correspondence should be addressed to C. L. (changlu@vt.edu).

Supplementary Data

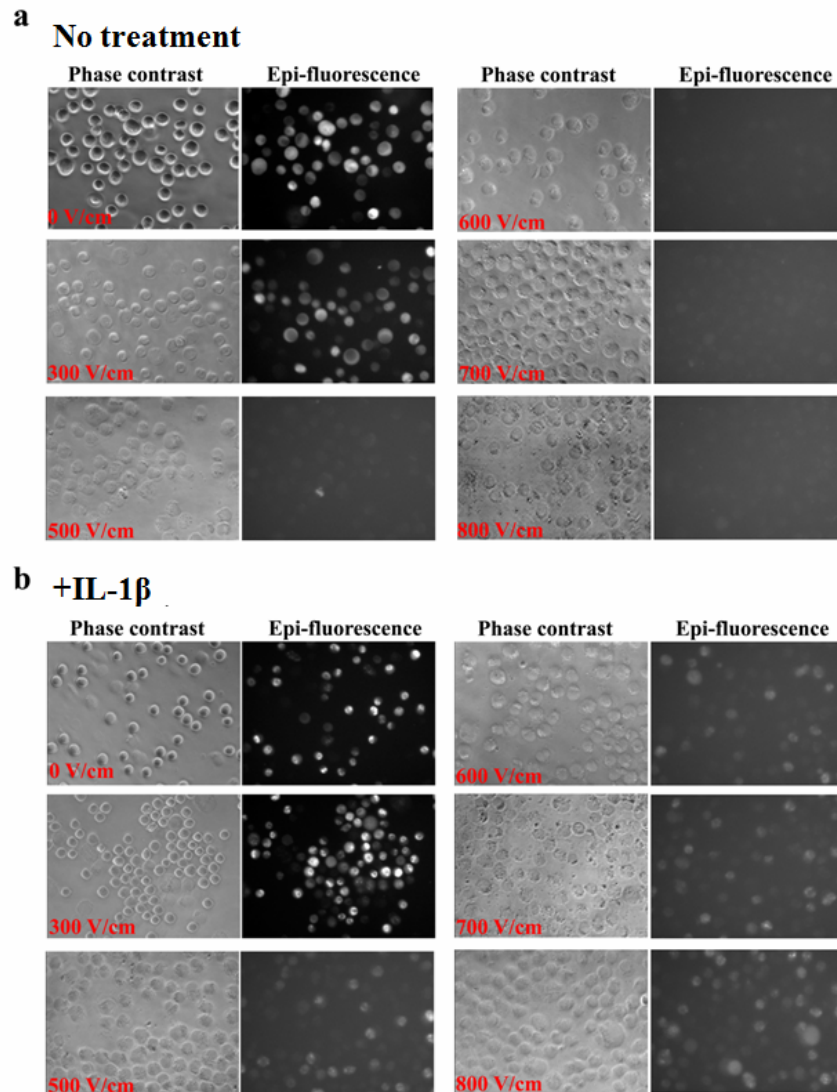


Figure S1. The phase contrast and epi-fluorescence images of NF κ Bp65-GFP cells (a) without stimulation and (b) stimulated with 20 ng/ml IL-1 β for 0.5 h at 37°C after electroporative flow cytometry screening under different field intensities and a field duration of 120 ms.

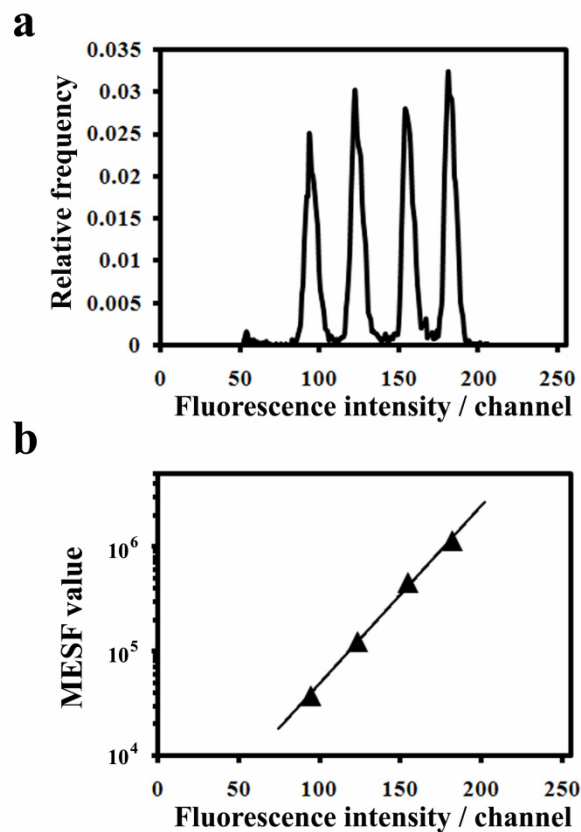


Figure S2. Calibration of the fluorescence signals. **(a)** The histograms of fluorescent beads with various predefined fluorescence intensity levels (high level Quantum FITC MESF Kits, Bangs Laboratories). **(b)** The working curve with the Molecules of Equivalent Soluble Fluorophores (MESF) values of the beads plotted against the peak channel numbers detected by our system ($R^2=0.997$). The plot allows the conversion between the channel numbers detected by our system and the MESF values.

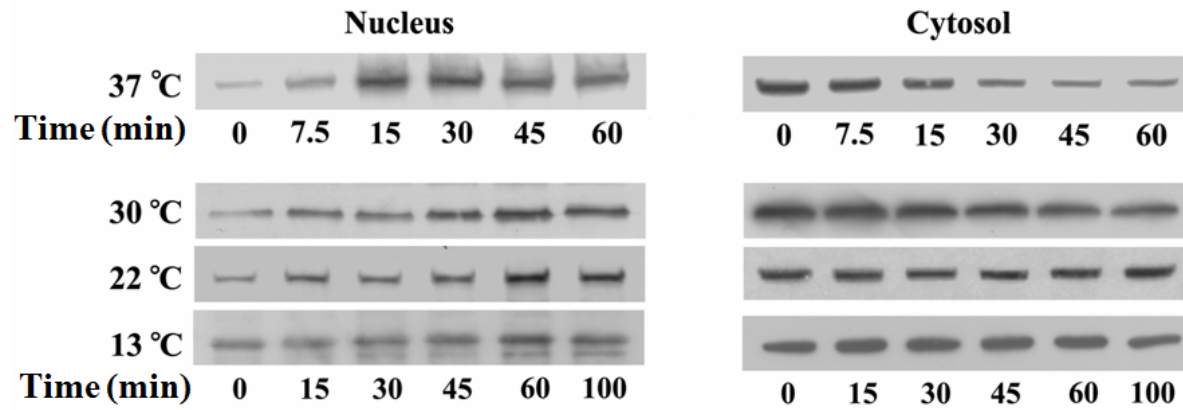


Figure S3. Subcellular fractionation/Western blotting results that indicate NF- κ B amount in the nucleus and the cytosol after stimulation by IL-1 β under different temperatures and after various stimulation times.