

Experiment overview

Experiment	SCASEST
Comparison	NSTE_ACS vs SCAD
Groups	NSTE_ACS, SCAD

Experiment statistics

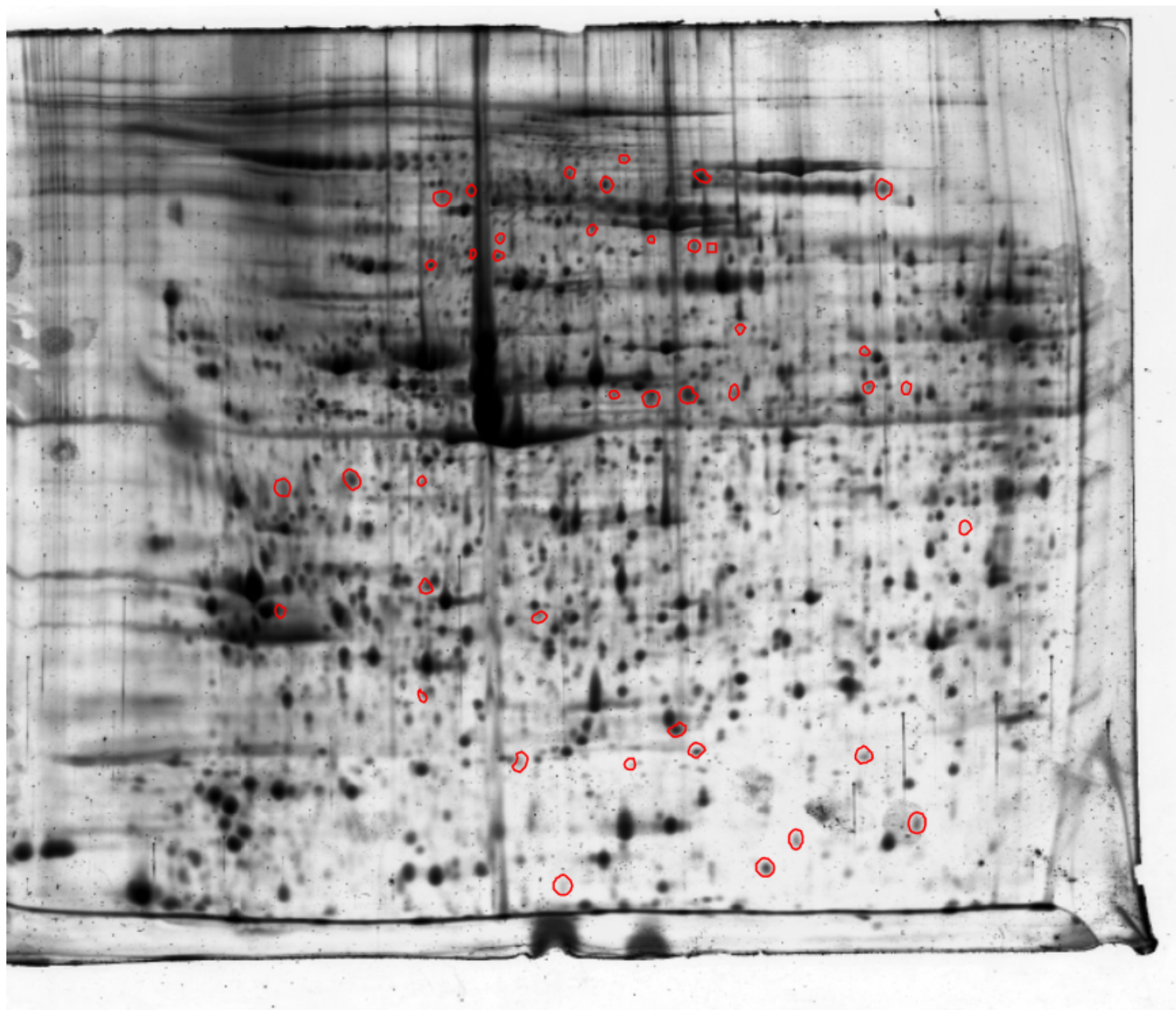
Statistical test	Anova & Mann-W
Applied filters	Only 'star rated' spots are included
Number filtered spots	40

Group color legend

 NSTE_ACS	 SCAD
---	--

Protein overview

Overview gel name: ACS15



Filtered spots

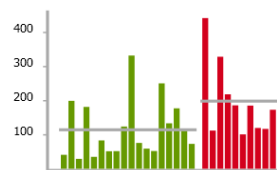
ID	225					SPARC (Secreted protein acidic and rich in cysteine)	★
Anova	8.405e-4						
Mann-W	7.404e-4						
Presence	100 %						
Fold	2.13						
Volume	318						
ID	299					Tropomyosin alpha chain 3	★
Anova	4.253e-4						
Mann-W	7.288e-4						
Presence	96 %						
Fold	3.90						
Volume	1191						
ID	414					Talin-1	★
Anova	0.0100						
Mann-W	0.0203						
Presence	67 %						
Fold	1.97						
Volume	152						
ID	450					Alpha-actinin-1	★
Anova	0.0258						
Mann-W	0.0208						
Presence	100 %						
Fold	1.63						
Volume	117						
ID	602					Zyxin	★
Anova	0.0236						
Mann-W	0.0052						
Presence	100 %						
Fold	1.93						
Volume	298						
ID	639					Talin-1	★
Anova	0.0270						
Mann-W	0.0185						
Presence	85 %						
Fold	2.26						
Volume	96						
ID	653					MAPRE-1 (Microtubule-associated protein RP/EB family member 1)	★
Anova	0.0013						
Mann-W	0.0018						
Presence	92 %						
Fold	2.06						
Volume	137						
ID	713					Ras-related protein Rab-27B	★
Anova	0.0182						
Mann-W	0.0196						
Presence	89 %						
Fold	1.66						
Volume	167						
ID	798					Talin-1	★
Anova	1.789e-4						
Mann-W	4.696e-4						
Presence	100 %						
Fold	2.15						
Volume	627						

ID	885				<p>Myosin-9</p>	★
Anova	0.0258					
Mann-W	0.0103					
Presence	92 %					
Fold	1.86					
Volume	158					
ID	905				<p>Talin-1</p>	★
Anova	0.0028					
Mann-W	0.0014					
Presence	92 %					
Fold	2.48					
Volume	105					
ID	925				<p>Actin Cytoplasmic-1</p>	★
Anova	0.0733					
Mann-W	0.0308					
Presence	96 %					
Fold	1.71					
Volume	117					
ID	1083				<p>F-actin-capping protein subunit beta</p>	★
Anova	0.0121					
Mann-W	0.0122					
Presence	92 %					
Fold	2.04					
Volume	186					
ID	1131				<p>Ras-related protein Rab-6B</p>	★
Anova	0.0041					
Mann-W	0.0015					
Presence	92 %					
Fold	1.91					
Volume	73					
ID	1148				<p>FYN-binding protein (ADAP, SLAP-130)</p>	★
Anova	0.0069					
Mann-W	0.0124					
Presence	71 %					
Fold	1.98					
Volume	123					
ID	1169				<p>Talin-1</p>	★
Anova	8.280e-4					
Mann-W	0.0021					
Presence	100 %					
Fold	1.67					
Volume	549					
ID	1184				<p>Talin-1</p>	★
Anova	0.0022					
Mann-W	0.0012					
Presence	78 %					
Fold	3.36					
Volume	48					
ID	1186				<p>Talin-1</p>	★
Anova	0.0069					
Mann-W	0.0014					
Presence	92 %					
Fold	1.59					
Volume	180					

ID	1254					Talin-1	★
Anova	0.0269						
Mann-W	0.0089						
Presence	78 %						
Fold	2.07						
Volume	162						
ID	1284					Serum Albumin	★
Anova	0.0127						
Mann-W	0.0110						
Presence	96 %						
Fold	1.85						
Volume	31						
ID	1311					Filamin-A	★
Anova	0.0379						
Mann-W	0.0156						
Presence	100 %						
Fold	1.62						
Volume	809						
ID	1322					Filamin-A	★
Anova	8.021e-4						
Mann-W	7.404e-4						
Presence	100 %						
Fold	2.86						
Volume	206						
ID	1501					Ras-related protein Rab-11A	★
Anova	0.0036						
Mann-W	0.0035						
Presence	96 %						
Fold	1.57						
Volume	584						
ID	1504					Ras-related protein Rab-6B	★
Anova	0.0523						
Mann-W	0.0460						
Presence	96 %						
Fold	1.54						
Volume	57						
ID	1557					Talin-1	★
Anova	2.304e-4						
Mann-W	7.404e-4						
Presence	100 %						
Fold	1.70						
Volume	971						
ID	1614					Talin-1	★
Anova	0.0493						
Mann-W	0.0033						
Presence	78 %						
Fold	2.60						
Volume	94						
ID	1626					Filamin-A	★
Anova	0.0049						
Mann-W	0.0028						
Presence	92 %						
Fold	1.69						
Volume	1876						

ID	1631					Filamin-A	★
Anova	3.471e-4						
Mann-W	9.208e-4						
Presence	100 %						
Fold	2.02						
Volume	287						
ID	1670					Serum Albumin	★
Anova	0.0169						
Mann-W	0.0107						
Presence	71 %						
Fold	2.20						
Volume	37						
ID	1818					Ras-related protein Rab-11A	★
Anova	0.0213						
Mann-W	0.0156						
Presence	100 %						
Fold	1.64						
Volume	253						
ID	1833					Rho GDP-dissociation inhibitor 2	★
Anova	0.0766						
Mann-W	0.0169						
Presence	92 %						
Fold	1.54						
Volume	485						
ID	1836					Integrin-linked protein kinase	★
Anova	0.0469						
Mann-W	0.0521						
Presence	96 %						
Fold	1.70						
Volume	230						
ID	1856					Filamin-A	★
Anova	0.0128						
Mann-W	0.0101						
Presence	85 %						
Fold	2.16						
Volume	390						
ID	1913					Septin-11	★
Anova	0.0031						
Mann-W	9.208e-4						
Presence	100 %						
Fold	2.05						
Volume	165						
ID	1925					Dynamin-1-like protein	★
Anova	0.0377						
Mann-W	0.0089						
Presence	85 %						
Fold	1.98						
Volume	129						
ID	1935					Proto-oncogene tyrosine-protein kinase Src	★
Anova	0.0590						
Mann-W	0.0130						
Presence	82 %						
Fold	1.57						
Volume	109						

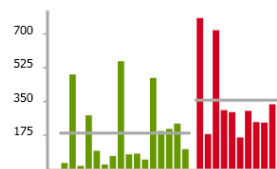
ID 2062
 Anova 0.0316
 Mann-W 0.0238
 Presence 100 %
 Fold 1.73
 Volume 145



Adenylyl
 cyclase-associated
 protein 1



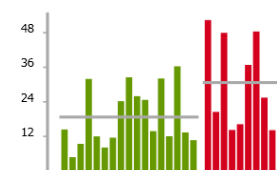
ID 2076
 Anova 0.0383
 Mann-W 0.0144
 Presence 92 %
 Fold 1.92
 Volume 252



Integrin-linked
 protein kinase



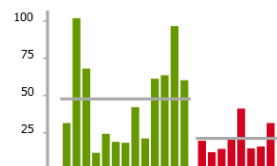
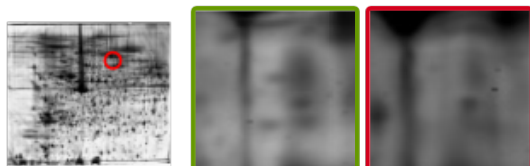
ID 2337
 Anova 0.0269
 Mann-W 0.0250
 Presence 92 %
 Fold 1.64
 Volume 23



Serum Albumin



ID 2818
 Anova 0.0279
 Mann-W 0.0246
 Presence 75 %
 Fold 2.25
 Volume 38



Caldesmon

