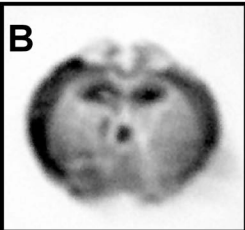
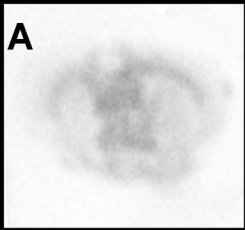


Figure S1. Histoblots of coronal cryosections of RML-infected mouse brain. Frozen sections of 10 μm were transferred to nitrocellulose and either left untreated (native, **A**) or denatured in 3 M guanidine thiocyanate (**B**). Denatured samples were also either digested with proteinase K (50 $\mu\text{g}/\text{mL}$, 18 h at 37 $^{\circ}\text{C}$; **C**) or reduced in 10% 2-mercaptoethanol (18 h at room temperature; **D**). Membranes were then blocked with 1% IgG-free BSA (Jackson) in TBS-T buffer, incubated with F4-31 mAb (1 $\mu\text{g}/\text{mL}$) then goat anti-mouse HRP (1:5000; Pierce), detected with ECL (Supersignal; Pierce), and imaged with a FluoroChem HD2 (AlphaInnotech, CA).



Supplemental Table I. Antibody binding to synthetic BoPrP peptides by ELISA.

BoPrP Sequence	Antibody			BoPrP Sequence	Antibody		
	F4-31	F10-26	HuM-P		F4-31	F10-26	HuM-P
95–106	0.04	0.066	0.06	170–181	0.05	0.071	0.06
100–111	0.04	3.43	1.73	175–186	0.02	0.066	0.06
105–116	0.04	3.398	2.11	180–191	0.03	0.077	0.06
110–121	0.05	0.44	0.13	185–196	0.05	0.066	0.10
115–126	0.06	0.073	0.05	190–201	0.03	0.062	0.06
120–131	0.05	0.064	0.06	195–206	0.05	0.067	0.06
125–135	0.02	0.061	0.06	200–211	nd	0.062	nd
130–141	0.03	0.072	0.06	205–216	0.04	0.071	0.14
135–146	0.02	0.066	0.07	210–221	0.01	0.064	0.07
140–151	0.04	0.071	0.06	215–226	0.02	0.068	0.06
145–156	0.07	0.066	0.08	220–231	0.03	0.098	0.06
150–161	0.03	0.44	0.08	225–236	0.04	0.05	0.056
155–166	0.03	0.075	0.06	230–241	0.04	0.069	0.052
160–171	0.04	0.063	0.05	102–241	1.61	0.85	1.50
165–176	0.05	0.069	0.06				

nd = not determined.

Supplemental Table II. Antibody binding to synthetic HuPrP peptides by ELISA.

HuPrP Sequence	Antibody		HuPrP Sequence	Antibody	
	F20-89a	3F4		F20-89a	3F4
88–97	0.09	0.08	154–163	0.15	0.14
91–100	1.05	0.08	157–166	0.12	0.11
94–103	1.55	0.09	160–169	0.11	0.08
97–106	1.24	0.21	163–172	0.09	0.08
100–109	0.09	1.68	166–175	0.08	0.08
103–112	0.09	1.40	169–178	0.08	0.08
106–115	0.09	1.38	172–181	0.08	0.09
109–118	0.09	0.09	175–184	0.08	0.09
112–121	0.09	0.08	178–187	0.09	0.09
115–124	0.09	0.08	181–190	0.09	0.10
118–127	0.09	0.08	184–193	0.09	0.09
121–130	0.09	0.10	187–196	0.08	0.08
124–133	0.08	0.10	190–199	0.08	0.08
127–136	0.09	0.10	193–202	0.08	0.10
130–139	0.08	0.10	196–205	0.09	0.09
133–142	0.09	0.09	199–208	0.09	0.08
136–145	0.09	0.08	202–211	0.09	0.09
139–148	0.09	0.08	205–214	0.09	0.08
142–151	0.09	0.08	208–217	0.09	0.10
145–154	0.35	0.08	211–220	0.08	0.08
148–157	0.10	0.09	214–223	0.09	0.09
151–160	0.09	0.08	217–226	0.10	0.09