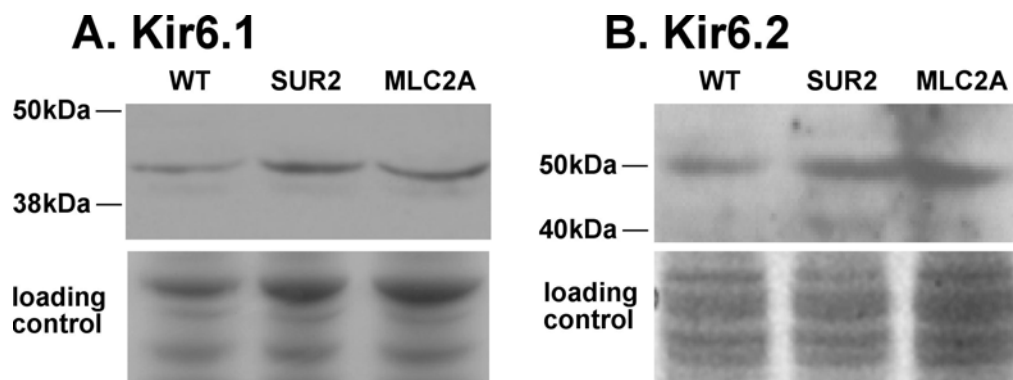


Supplemental Figure 1



Supplemental Figure 1. Kir6.1 and Kir6.2 expression is unchanged in MLC2A hearts. Immunoblots from WT, SUR2 deleted, and MLC2A ventricular heart preparations were probed with antibodies to Kir6.1 or Kir6.2. A total protein stain demonstrates approximately equal loading of WT, SUR2 deleted, and MLC2A lysates.