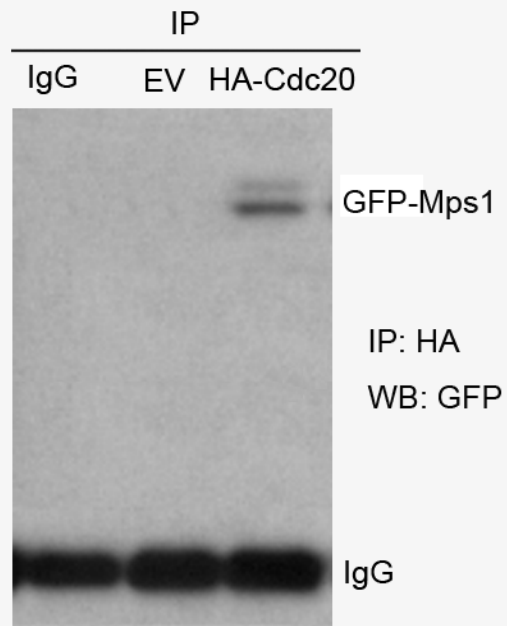


Suppl Fig.1. Mps1 Interacts with Cdc20. **A,** HEK293T cells were cotransfected with an empty vector (EV) or constructs encoding the indicated HA-Cdc20 and a plasmid encoding GFP-tagged Mps1. During the last 6 hr before harvesting, cells were treated with the proteasome inhibitor MG132. Exogenous proteins were immunoprecipitated (IP) from whole-cell extracts (WCE) with anti-HA antibody, and immunocomplexes were probed with anti-Mps1 antibody. IgG was used as control. **B,** Endogenous Cdc20 and Cdc27 coimmunoprecipitate endogenous Mps1. Whole-cell extracts (WCE) from 293T cells were immunoprecipitated (IP) with normal IgG, anti-Cdc20 or anti-Cdc27 antibodies. Immunocomplexes were probed with anti-Mps1 antibody. Where indicated, the proteasome inhibitor MG132 was added during the last 6 hr in culture.

Suppl.Fig.1

A



B

