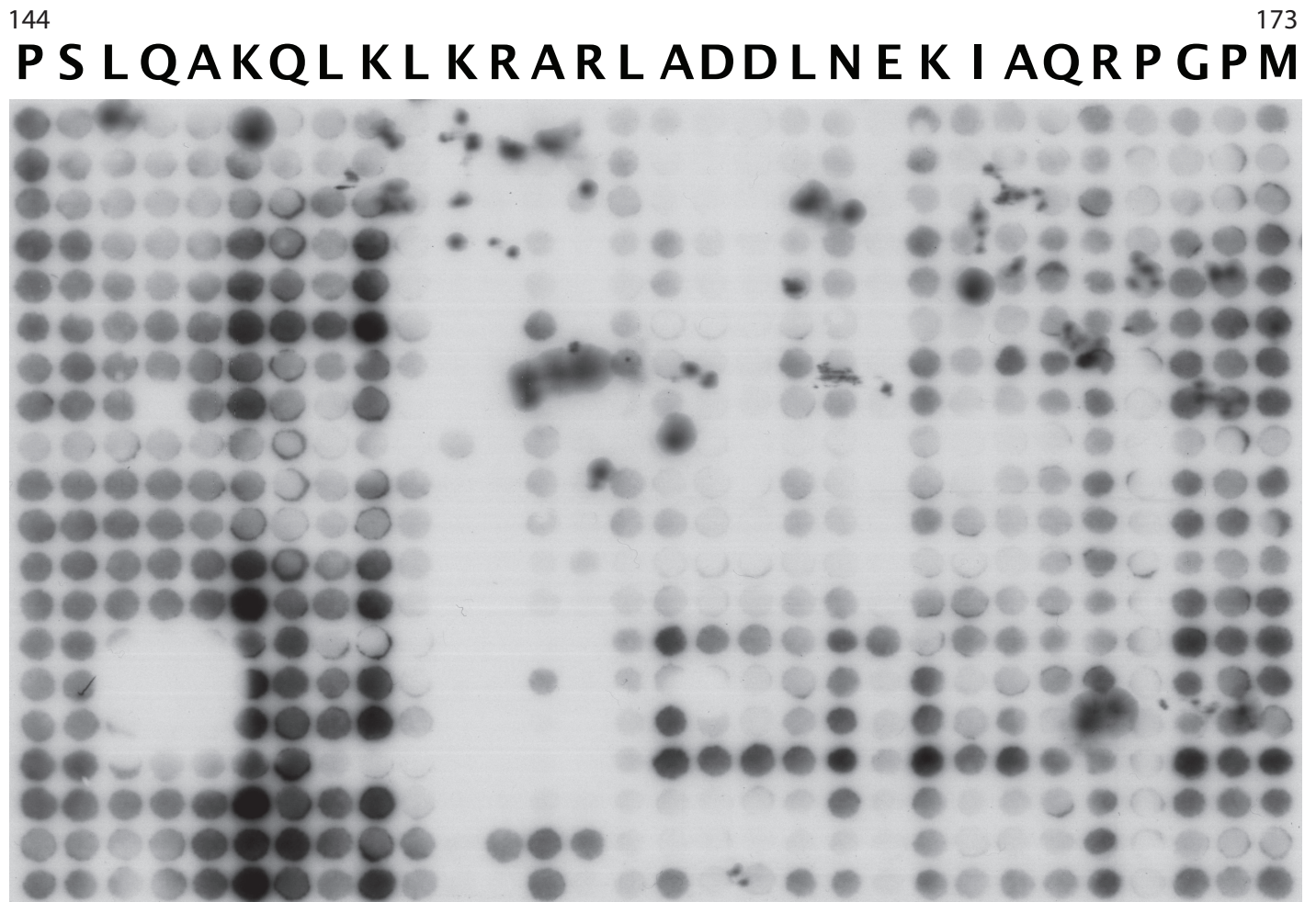


**Supplementary Figure 1.** The alanine scanning mutagenesis of B2 and B3 as in Figure 1D. The localisation of MRTF-A-GFP was analysed in serum-starved cells. C, cytoplasmic; N/C, pancellular; N, nuclear ( $\geq 100$  cells per condition).



**Supplementary Figure 2.** Analysis of residues essential for B2-Imp $\alpha$  interaction. Amino acid substitution peptide array: 30 amino acid peptides corresponding to MRTF-A144-173 were spotted on a membrane. Each peptide has one residue replaced with one of the 20 most common amino acids. The membrane was probed with recombinant GST-Imp $\alpha$  followed by Western blotting with anti-GST antibody.