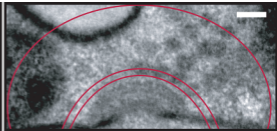
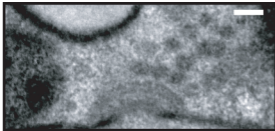


### **Supplementary Figure 1: Categorizing Docked Vesicles**

A representative TEM image of a MOP and the adjacent cytoplasm and vesicles. To acquire the data for Table 3, the distance between the MOP and the center of the vesicles was measured. Each vesicle was grouped according to its distance from the MOP, as indicated by the diagram. Vesicles whose centers were 0-35 nm from the surface of the MOP (below the small red arc) were considered docked. Vesicles whose centers were 36-60 nm from the surface of the MOP (below the medium red arc) were considered tethered. Vesicles whose centers were 61-300 nm from the surface of the MOP (below the large red arc) were considered accumulated. Scale bar equals 100 nm.

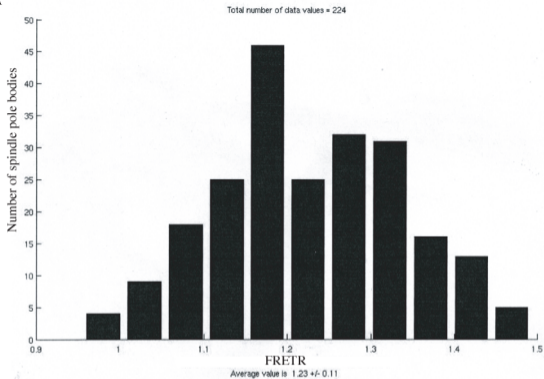
### **Supplementary Figure 2: Example of FRET data**

A) Distribution of FretR values for spindle pole bodies in strain EMD52. EMD52 expresses YFP-Spo21 and CFP-Mpc54. B) Representative FRET images from the EMD52 strain. The bright foci are spindle pole bodies. They can be seen in all channels, indicating that FRET is occurring between YFP-Spo21 and CFP-Mpc54.



Mathieson, et. al. Supplemental Figure 1

A



B

