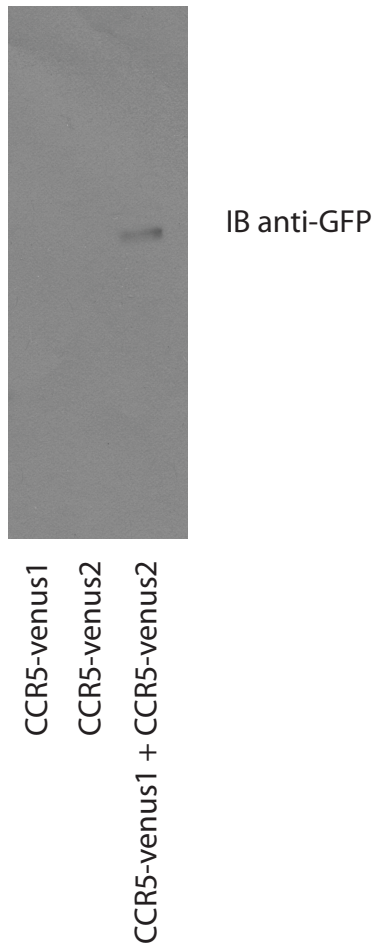


Supplemental Figure 1. Fluorescence of CCR5-venus1/CXCR4-venus2 pair

Bimolecular Fluorescence Complementation pairs do not always generate high levels of fluorescence. Here, we show that the pair CCR5-venus1 + CXCR4-venus2 is not a very good pair to generate a fluorescence signal. This pair is compared to the one that was used in the study, and each construct expressed individually. Results are representative of at least 3 independent experiments.

Supplemental Figure 2



Supplemental Figure 2. Specificity of the GFP antibody used

Representative immunoblot of the GFP antibody we used to recognize specifically the reconstituted venus formed by our receptor pairs. Lane 1 shows the expression of CCR5-venus1, lane 2 the expression of CCR5-venus2 each expressed individually, while lane 3 shows the band recognized by the antibody upon co-expression of both CCR5-venus1 + CCR5-venus2 in HEK293 cells.