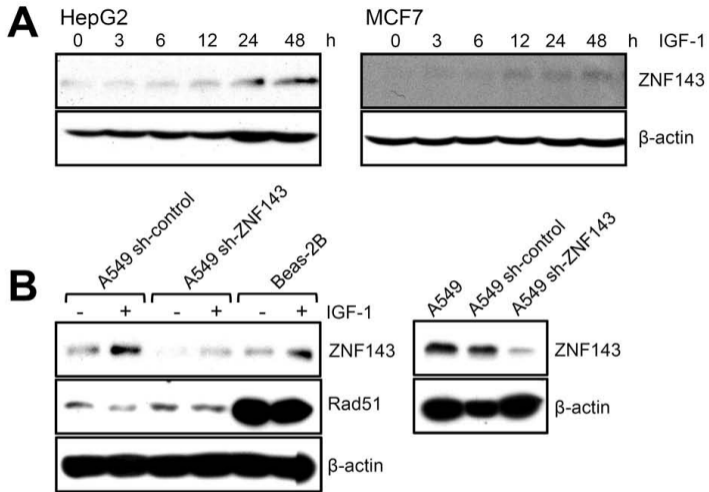


**Figure S1.** IGF-1 treatment induces the PI3-kinase phosphorylation in HCT116 cells. Cells were plated on a 60-mm dish, grown for 24 h in DMEM containing 10% FBS, serum-starved for 24 h, incubated with IGF-1 (100 ng/ml) for the indicated time periods (0 - 60 min), harvested, and analyzed for ERK, AKT, JNK, and p38 kinase phosphorylation by immunoblotting. Results shown are representative of at least three independent experiments.



**Figure S2.** IGF-1 treatment induces ZNF143 expression in various cancer cell lines. (A) Cells were plated on a 60-mm dish, grown for 24 h in DMEM containing 10% FBS, serum-starved for 24 h, incubated with IGF-1 for the indicated time periods (0 – 48 h), harvested, and analyzed for ZNF143 expression by immunoblotting. (B) Cells were grown and serum-starved as in (A), incubated with IGF-1 (100 ng/ml) for 6 h, lysed, and analyzed for ZNF143 expression by immunoblotting. Results shown are representative of at least three independent experiments.