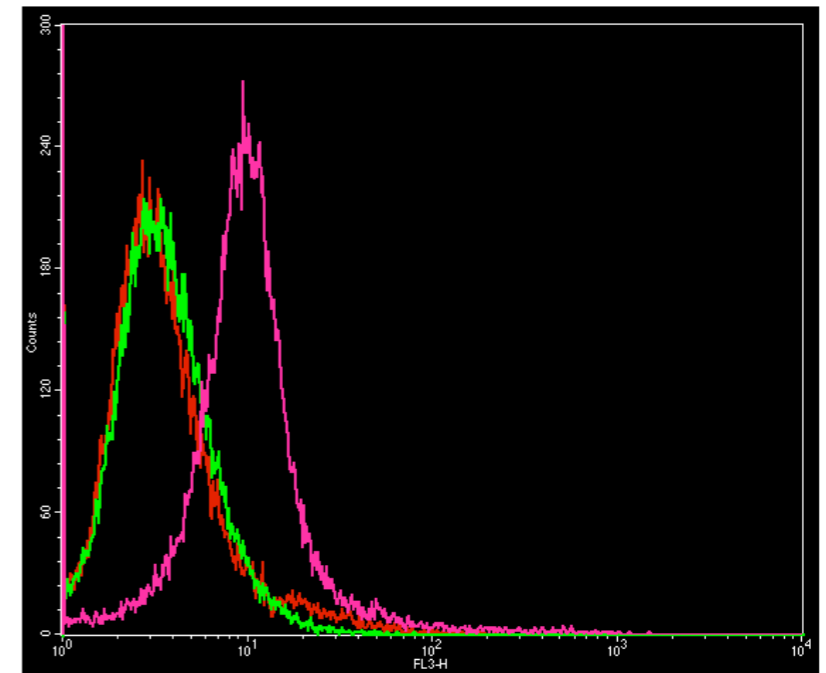
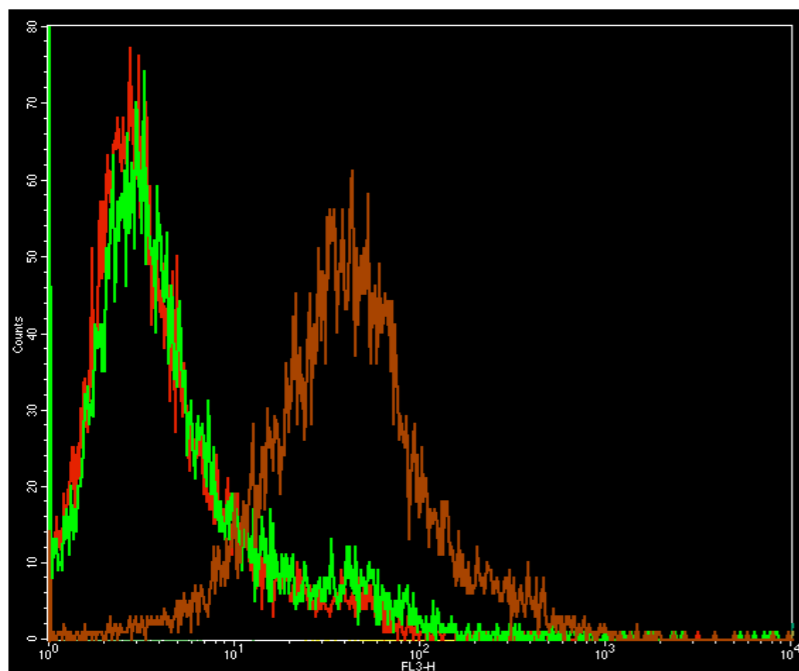


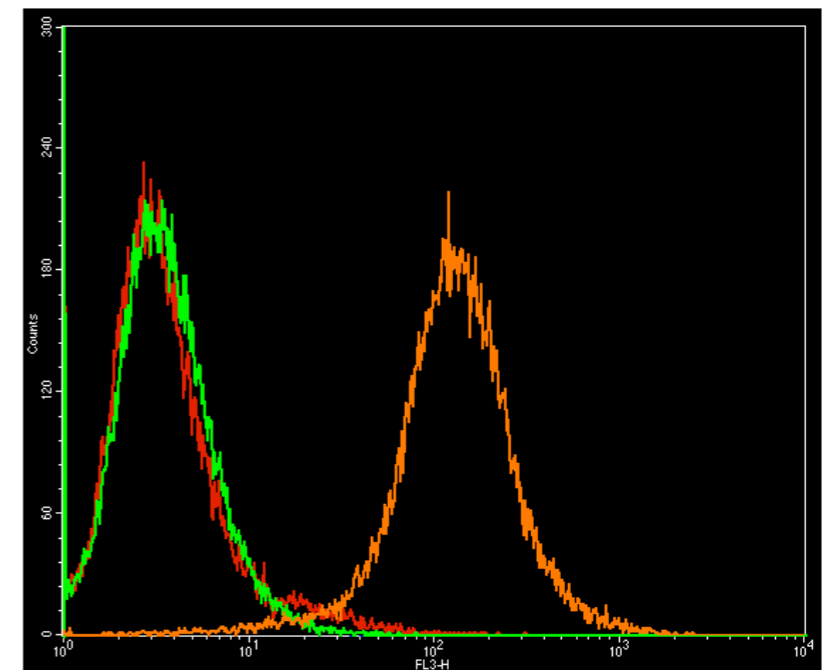
**+ 10-30%**



**++ 30-60%**



**+++ 60-80%**



**++++ >80%**

A threshold based on the fluorescence intensity of the PE-Cy5.5-labeled library was chosen so that 99% of the cells have fluorescence intensities below it. When PE-cy5.5 labeled aptamer was incubated with the cells, the percentage of cells with fluorescence intensity above the set threshold was used to evaluate the binding