

Supplemental Figure 1

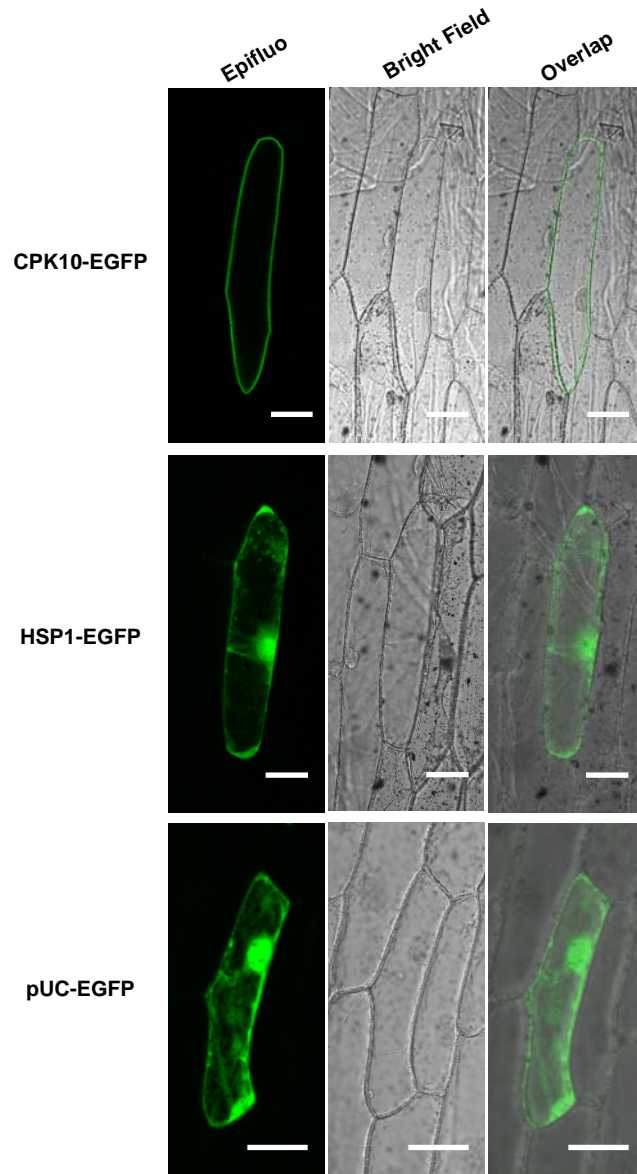


Figure S1. Subcellular localization of CPK10 and HSP1. Confocal images of onion epidermal cells transiently expressed with CPK10-GFP or HSP1-GFP construct, respectively. The epidermal cell expressed with pUC-EGFP was used as the control. Bars=50 μ m. Pictures were taken with confocal laser scanning microscope (Nikon EZ-C1).

Supplemental Figure 2

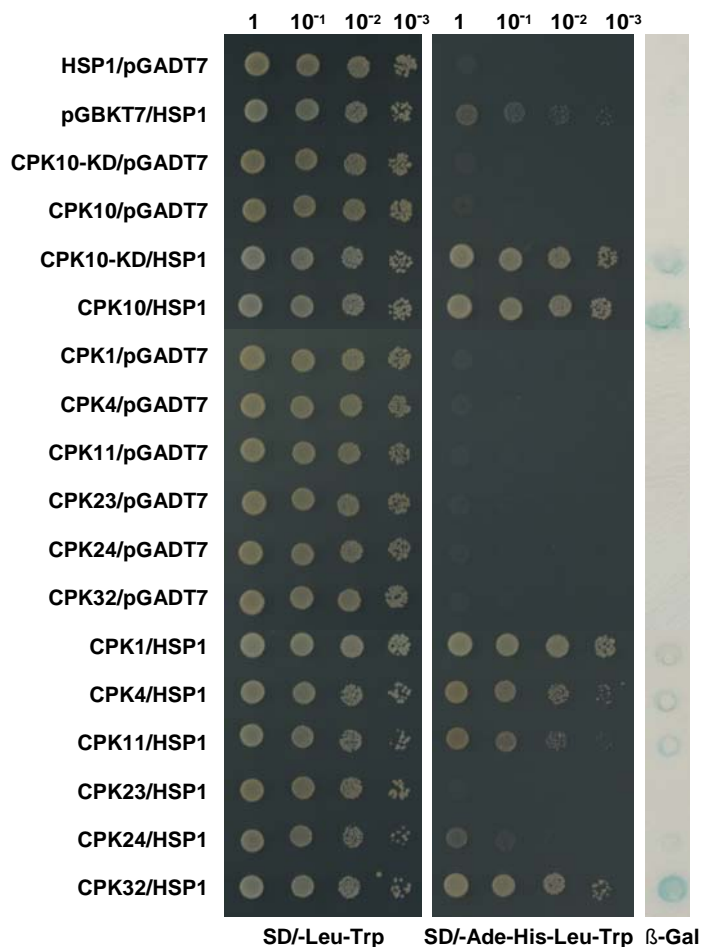


Figure S2. Yeast two-hybrid assays for identification of HSP1-interacting CDPKs. The various CDPK members were used as bait constructs respectively. The blank pGADT7 and pGBKT7 vectors were used as negative controls. Transformants were then patched on selection medium and grown for 4 days before β-Gal (β-Galactosidase) assay. KD, kinase domain.