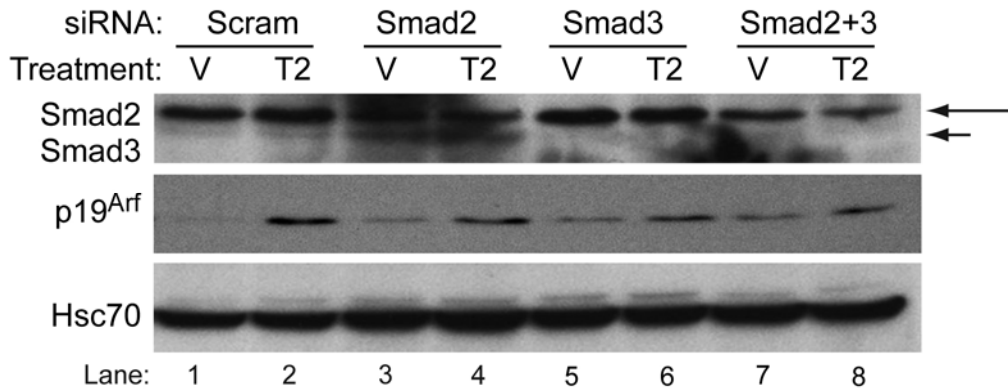


Supplementary Figure



Legend: siRNA targeting Smad 2 and 3 impairs Tgf β 2 induction of *Arf*. Representative western blots of lysates from wild type MEFs treated with Tgf β 2 (T2) or vehicle (V) for 72 hours following transfection with either siRNA control (Scram), or siRNA targeting Smad 2 (long arrow) and/or Smad 3 (short arrow) as indicated. Western blotting confirms partial knock down of Smad 2. (This is a longer exposure of the blot shown in Figure 4A to show Smad 3 knock down.)