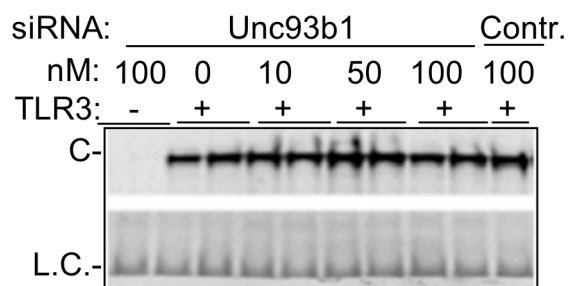


## Supplemental Information

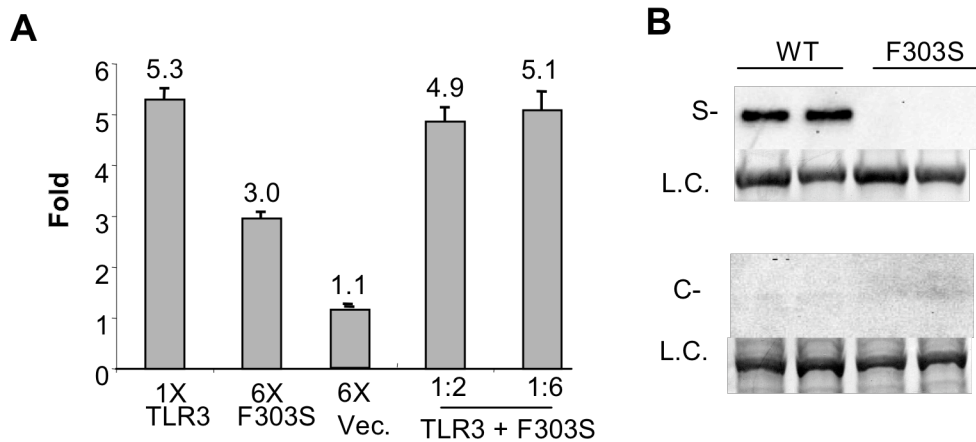
**Table S1.** Oligonucleotides and siRNAs used in this study.

	Construct made	Sense (5' to 3')	Anti-sense (5' to 3')
<b>primers</b>	Δ64	GATCTGTCTCATAATGGCTTGCA	GTTTATCAATCCTGTGAACATAT
	LRR12 ΔL	TCGAGAATGTGAGGTACCTGAATTTGAAA CGGTCTTTTCTCCCAAGATTGATGATTT TTCTTTTCAGTGGC	TCGAGCCACTGAAAAGAAAAATCATCAATCT TGGGGAGAAAAGACCGTTTCAAATTCAGGTA CCTCACATTC
	LRR12	TCGAGAATGTGAGGTACCTGAATTTGAAA CGGTCTTTTACTAAACAAAGTATTTCCCT TGCCTCACTCCCAAGATTGATGATTTTT CTTTTCAGTGGC	TCGAGCCACTGAAAAGAAAAATCATCAATCT TGGGGAGTGAGGCAAGGGAAATACTTTGTTT AGTAAAAGACCGTTTCAAATTCAGGTACCTC ACATTC
	N-L11	GCTAGCAAGCTTGCCACCATGAGACAGA CTTTGCC	TAGGCTCGAGAGCTCAGGGATGTTGGTATG GGTCTCGTTAATCCAGAAAAGCCCGTGCAA GAGTGAG
	N-L12 and N-L12ΔL1	GCTAGCAAGCTTGCCACCATGAGACAGA CTTTGCC	TAGGCTCGAGAGCTCAGGGATGTTGGTATG GGTCTCGTTAATCCATTTTAGCCACTGAAA GAAAAATCATC
	UNC93B1 ΔN36	GAGGCGATCGCCATGGTGGGCGCGTAC CCCAACTACAACG	GCGACGCGTCTGCTCCTCCGGCCCGTCTCC
<b>siRNAs</b>	UNC93B1	GGAGAGACAGGACUUAUCUU	GAUGAAGUCCUGUCUCUCCUU
	ST3GAL4	GGAAGACAGUUUUUAUUUUTT	AAAAUAAAAACUGUCUUCCTCG

**Fig. S1.** siRNA to Unc93b1 did not affect the accumulation of full-length TLR3. The gel image contains results from a Western blot analysis of the cells examined for TLR3 activation of reporter activity in the absence or presence of siRNA knockdown of Unc83B1.



**Fig. S2.** Characterization of the F303S SNP on signal transduction and secretion. A) Effects of the F303S substitution on activation of reporter gene expression. Transiently-transfected HEK293T cells were assayed for TLR3 or TLR3-F303S activation of luciferase reporter production. The mean and standard deviation is from three independently assessed samples. The last two samples were from cells transfected with a mix of the WT TLR3 and the F303S plasmid. These results demonstrate that F303S is inactive for dominant negative effect on WT TLR3. B) Effects of the F303S mutation on secretion of the product TLR3 ectodomain. S denotes a secreted protein found in the cytoplasm of the cell culture medium, L. C. is intended to denote a loading control.



**Fig. S3.** Secretion of truncated TLR3ECD. N-L10 containing the first ten LRRs of TLR3, can be secreted into the medium, but N-L15 could not. The western blot was performed with both a 1:1 mixture of the medium and the cell lysate or the two fractions loaded separately in an SDS-PAGE, as shown above the image of the western results.

