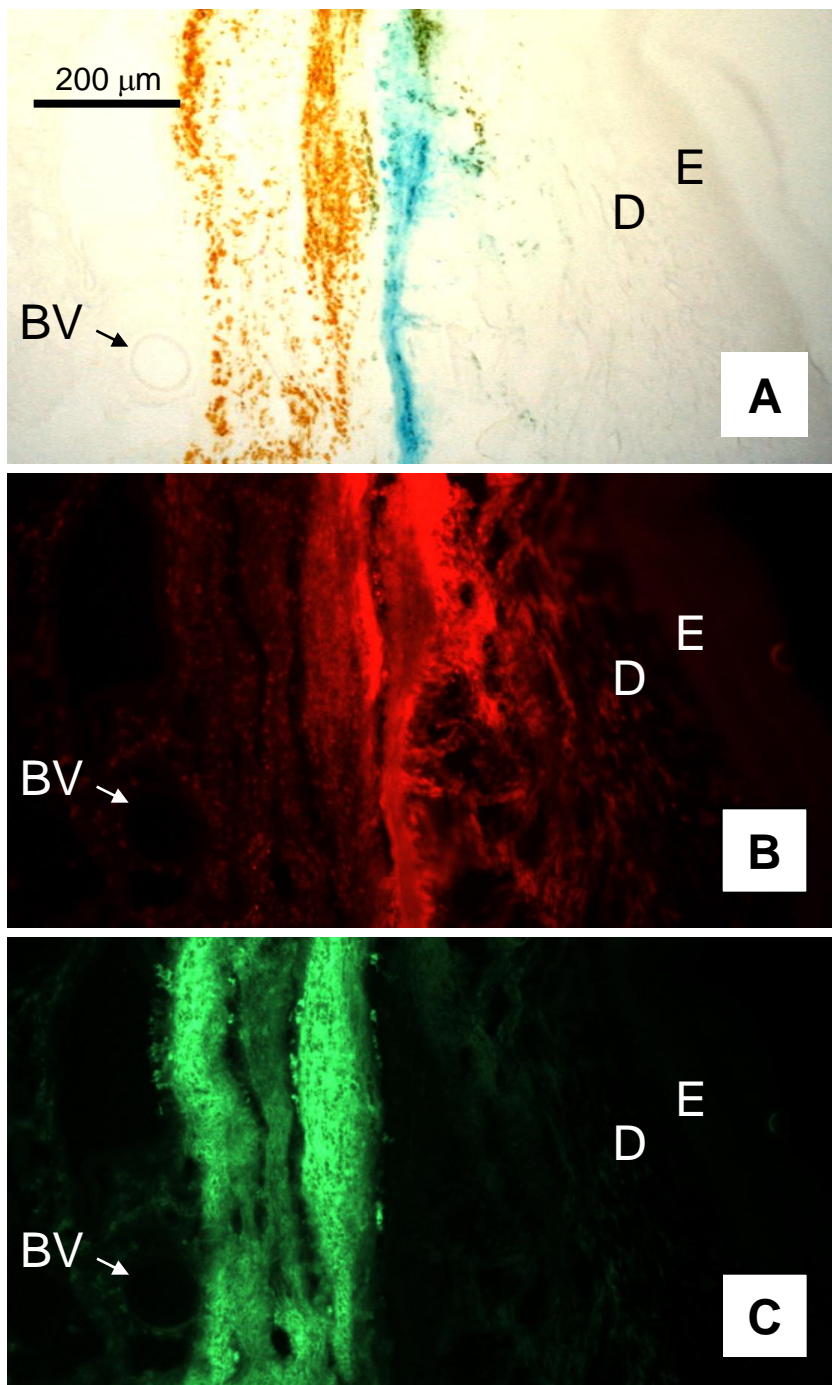


Supplementary Figure 1



Supplementary Figure 1: Distribution of dye in cutaneous tissue. **A.** Brightfield

photomicrograph of a 16 μm thick section of the glabrous skin of the rat hindpaw injected with DiO and DiD 14 days earlier. The epidermis (E) and dermis (D) are indicated as is a blood vessel (BV, arrow). **B.** The same section in A under epifluorescence illumination with a far red filter set enabling visualization of the extent of DiD spread. DiD was injected as was DiI for the labeling of DRG neurons with the tip of the injection needle pointing toward the surface of the tissue. **C.** The same section in A under epifluorescence illumination with a filter set enabling visualization of the extent of DiO spread. DiO was injected with the injection needle pointing away from the glabrous skin of the hindpaw. The limited spread of both dyes was typical of that observed with DiI. The scale bar in A is the same for B and C.