

European Journal of Immunology

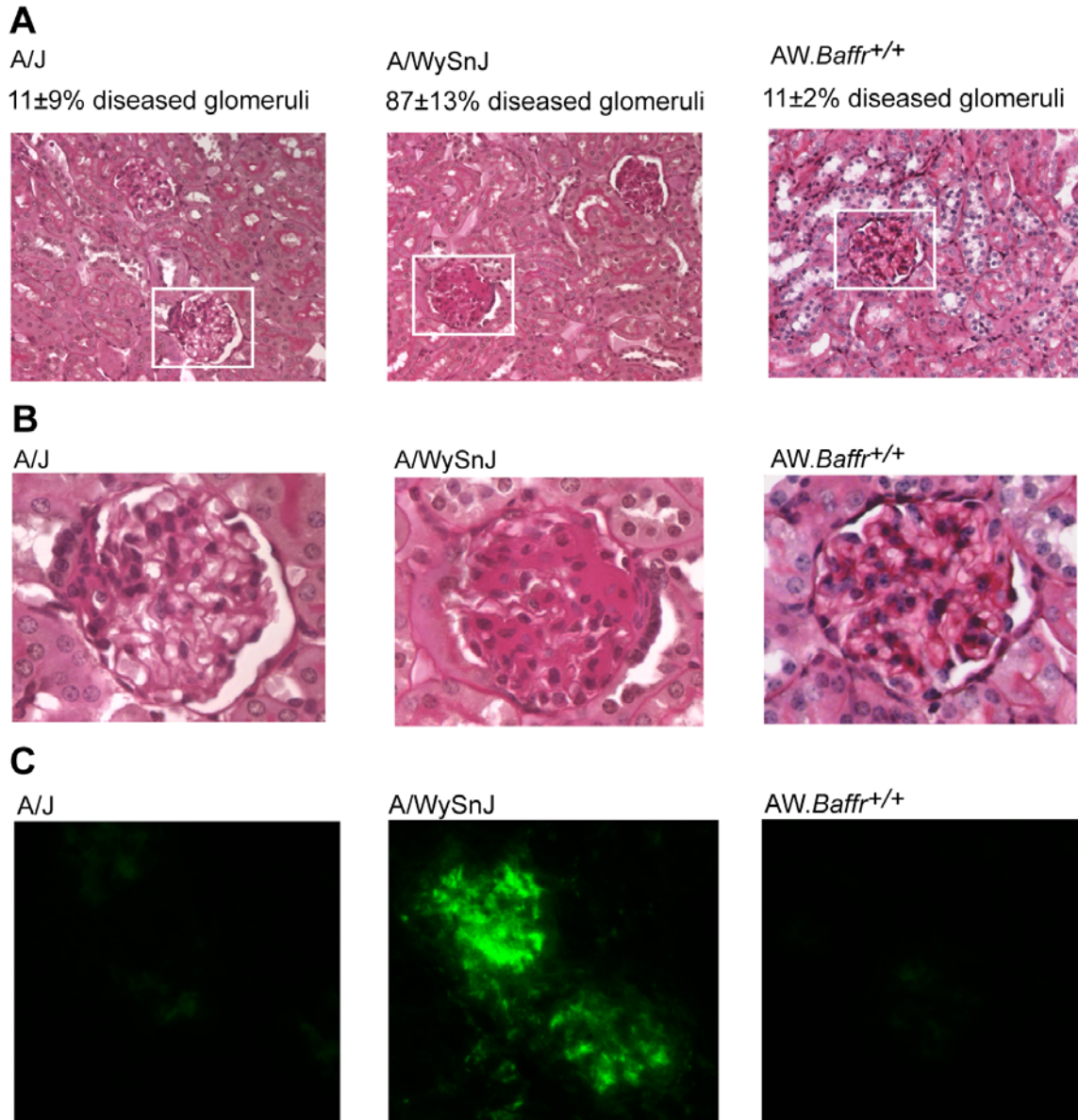
Supporting Information

for

Eur. J. Immunol. 10.1002/eji.200837817

Systemic autoimmunity in BAFF-R-mutant A/WySnJ strain mice

Christopher G. Mayne, Ian J. Amanna, Faye E. Nashold and Colleen E. Hayes



Supplementary Fig. 1. A/WySnJ mice develop renal pathology and accumulate IgG deposits in the glomeruli, whereas A/J and AW.Baffr^{+/+} mice do not. *A*, Kidney sections stained with periodic acid Schiff's reagent. *B*, Kidney sections within the white boxes in panel *A* were enlarged to show renal pathology. *C*, Kidney sections stained with FITC-coupled antibodies to mouse IgG. Histopathological and immunohistochemical analyses were performed on kidneys from mice aged 11-12 mo as described in Materials and Methods.