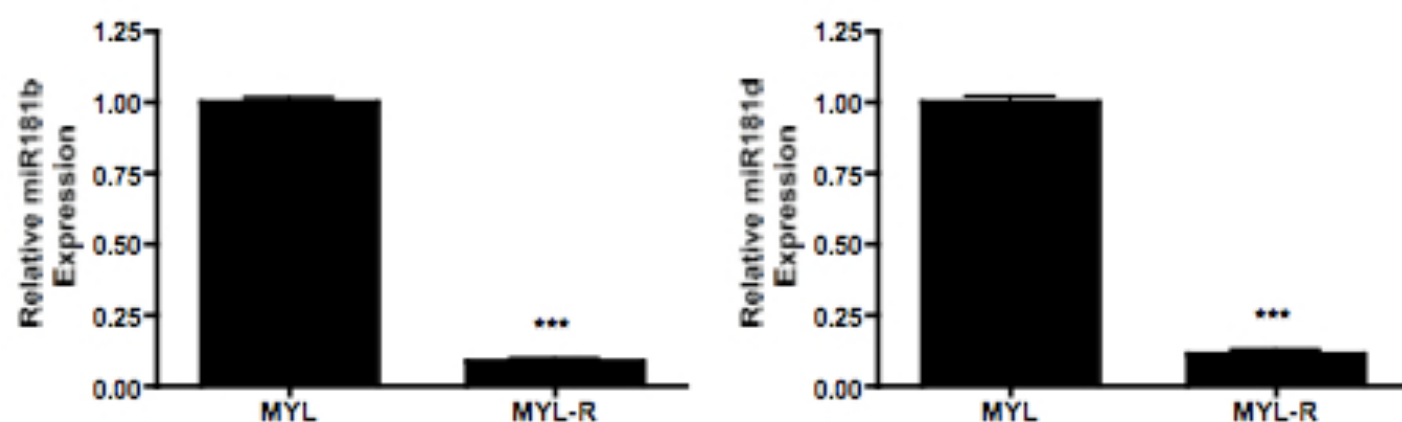


Lyn Kinase-dependent Regulation of miR181 and Mcl-1 Expression: Implications for Drug Resistance in Myelogenous Leukemia

Eric I. Zimmerman, Claudia M. Dollins, Melissa Crawford, Steven Grant, Serge P. Nana-Sinkam, Kristy L. Richards, Scott M. Hammond, and Lee M. Graves

Mol Pharm



Supplemental Figure 1: Quantitative RT-PCR of miR181b and miR181d. Total RNA was extracted from 2×10^6 cells and miRNA expression was determined by qRT-PCR. Data represent the mean \pm SEM of triplicate experiments performed with triplicate samples (***, $p < 0.001$).