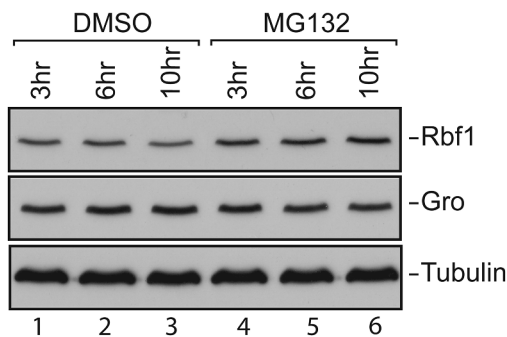


**Supplementary Figure 1.** (A) Effect of proteasome inhibitor MG132 on endogenous Rbfl and Groucho corepressor protein levels. S2 cells were plated at a density of 1.5 million/ml, grown for 5 days, then treated with proteasome inhibitor MG132 or vehicle (DMSO) as indicated. The protein levels were assayed by Western blot and quantitated by photon-capture analysis with a Fuji LAS-3000 Imager. Under these cell culture conditions, the Rbfl protein but not Groucho was found to be specifically stabilized upon MG132 treatment. (B) Quantitative assessment of Rbfl levels shown in (A). Bars indicate ratios of Rbfl from MG132 treated / DMSO treated cells. All values were first normalized to tubulin levels.

A



B

