

Clan Mentality: Evidence that Medial Prefrontal Cortex Responds to Close Others

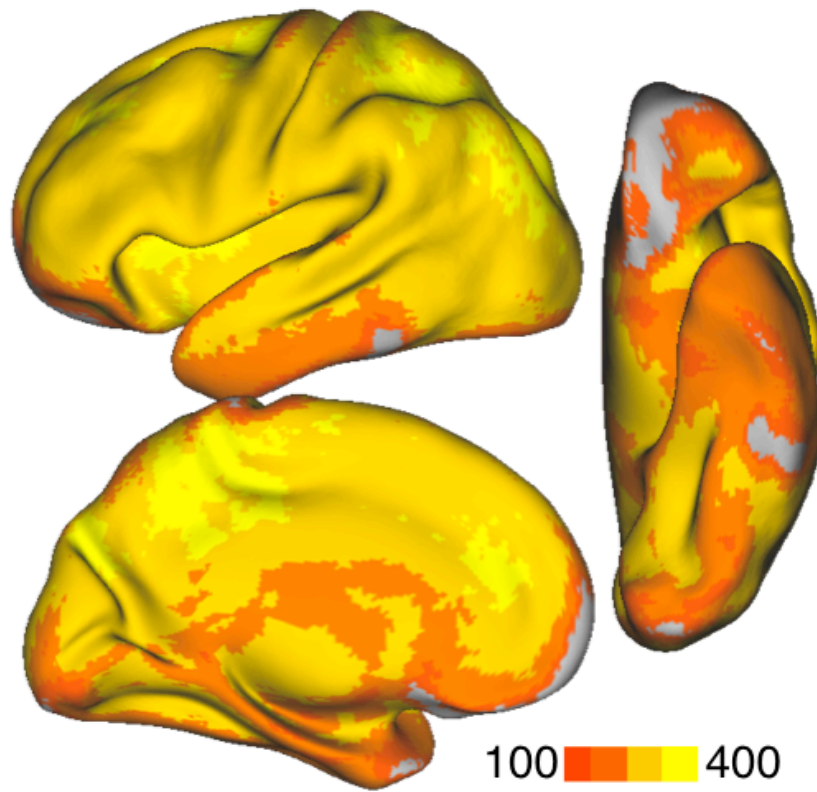
Supplementary Materials

Mean Signal-to-Noise map for Experiment 2

An important caveat to the whole-brain results reported for all Experiments is that the MRI acquisition protocols that we used do not recovery signal in certain regions orbitofrontal cortex or other regions such as the anterior temporal lobe that are compromised by susceptibility artifacts (Ojemann et al., 1997). As illustration of this point, the mean signal-to-noise (SNR) for all subjects in Experiment 2 is visualized on an inflated Caret surface in Supplementary Figure 1. Note that signal is particularly low in orbitalfrotal cortex and the most anterior part of the medial wall. For this reason we cannot preclude the possibility that these and other compromised regions also respond differentially to our task conditions.

Ojemann JG, Akbudak E, Snyder AZ, McKinstry RC, Raichle ME, Conturo TE (1997) Localization and quantitative analysis of gradient refocused echo-planar fMRI susceptibility artifacts. *NeuroImage* 6:156-167.

Mean SNR map for Experiment 2



Supplementary Figure 1