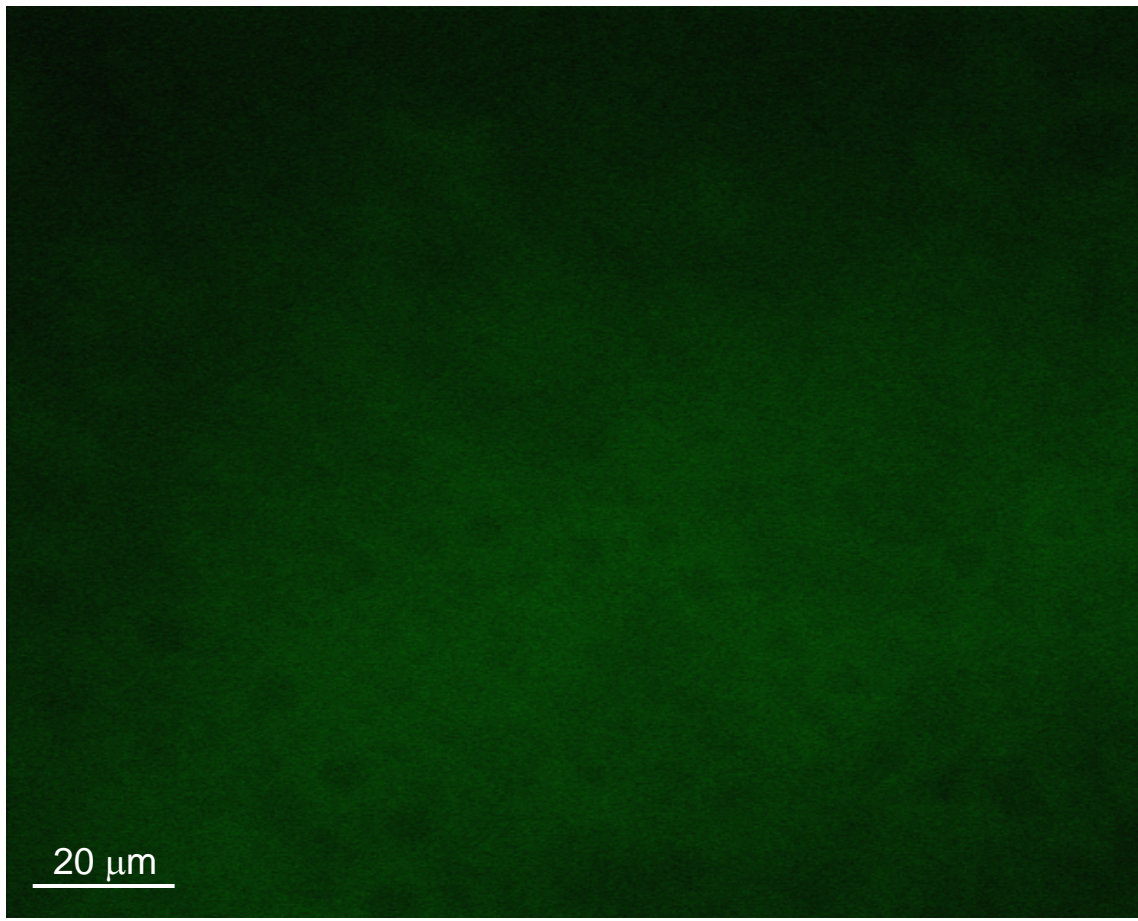
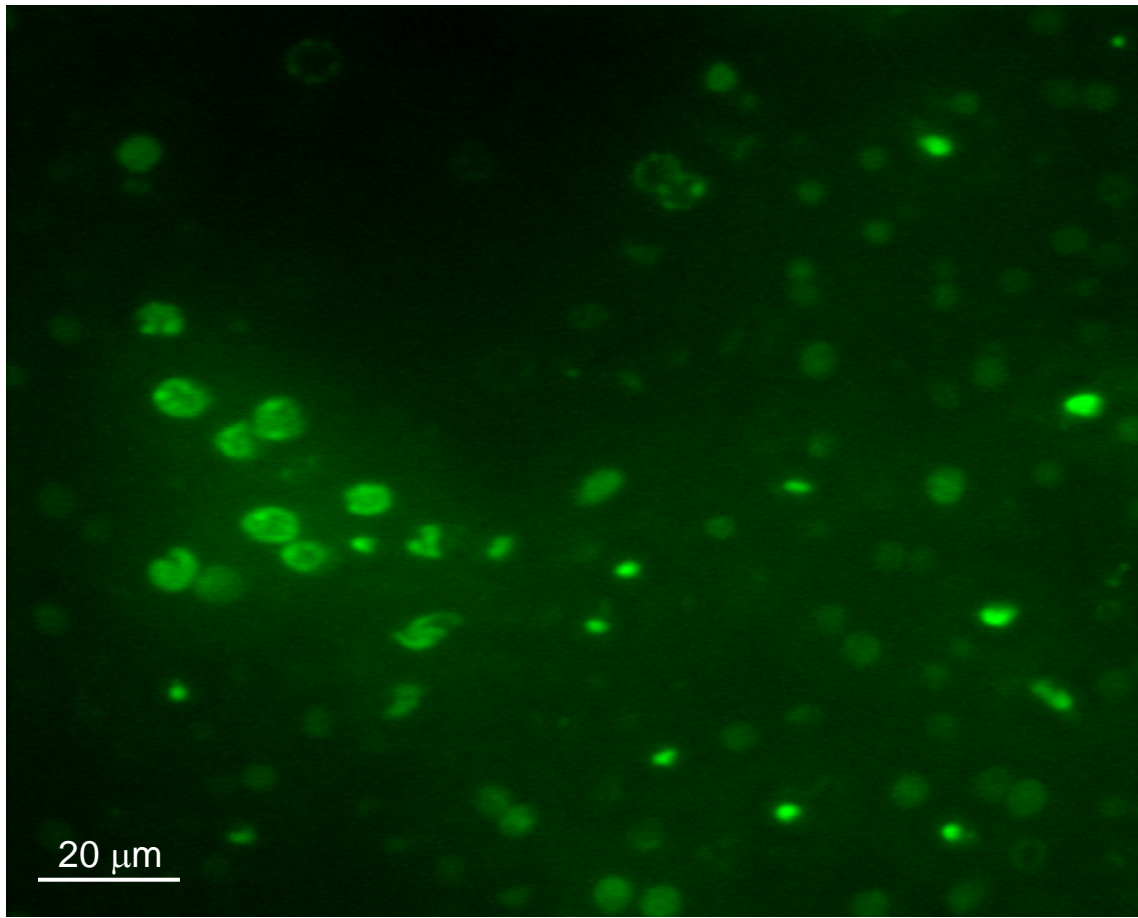


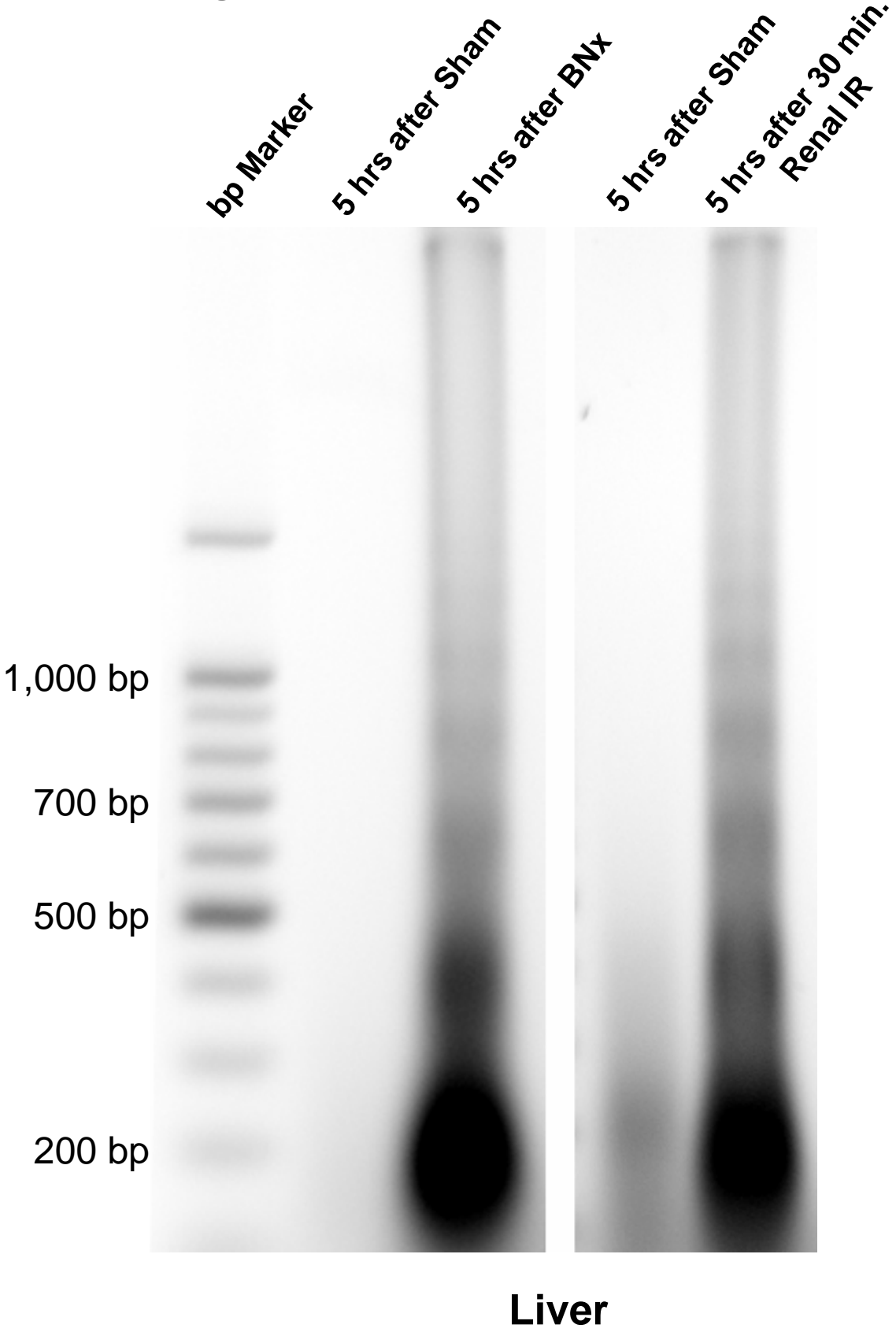
5 hrs after Sham



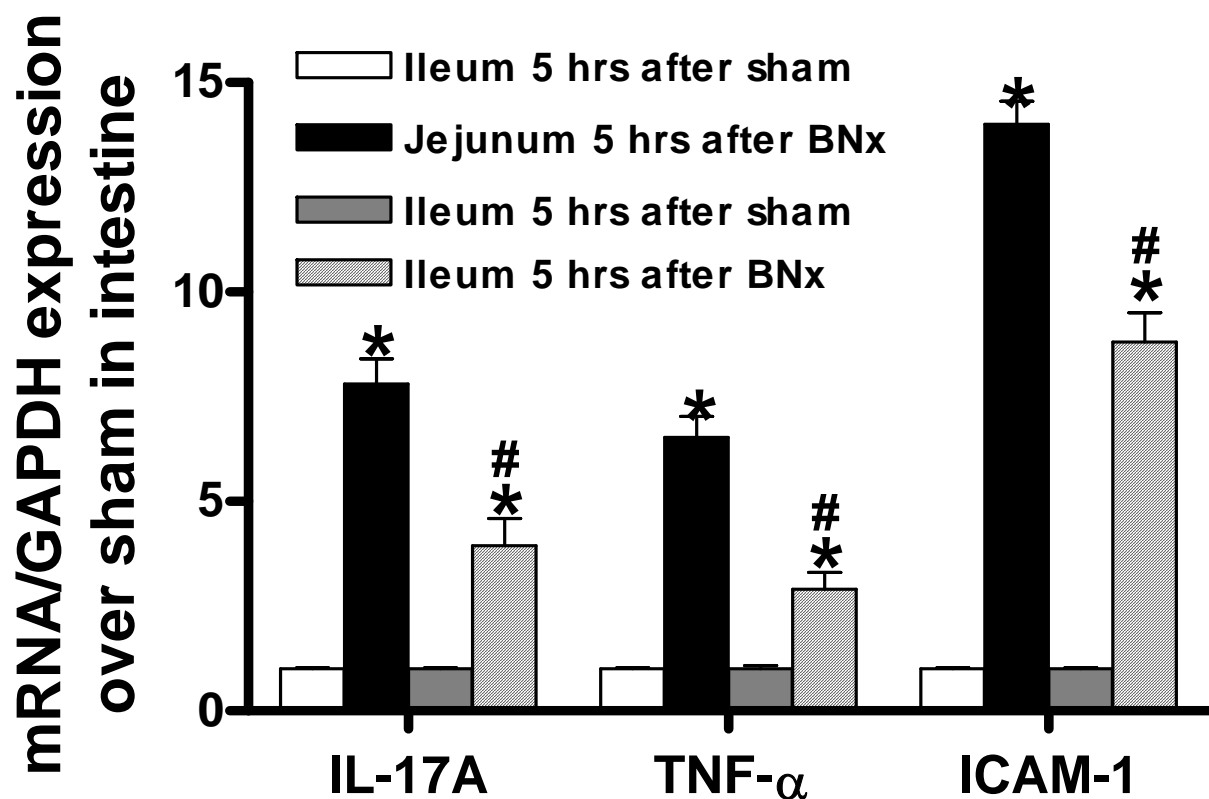
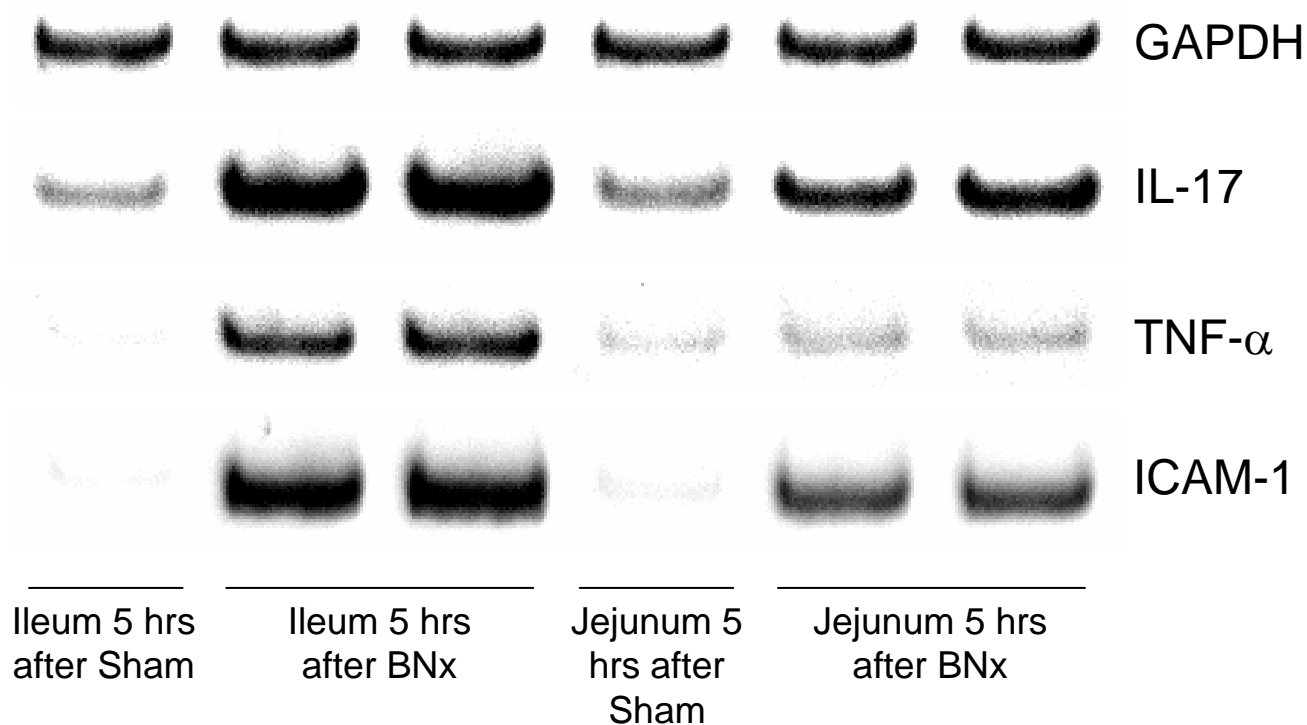
5 hrs after 30 min. RIR



**Supplemental Figure 2**

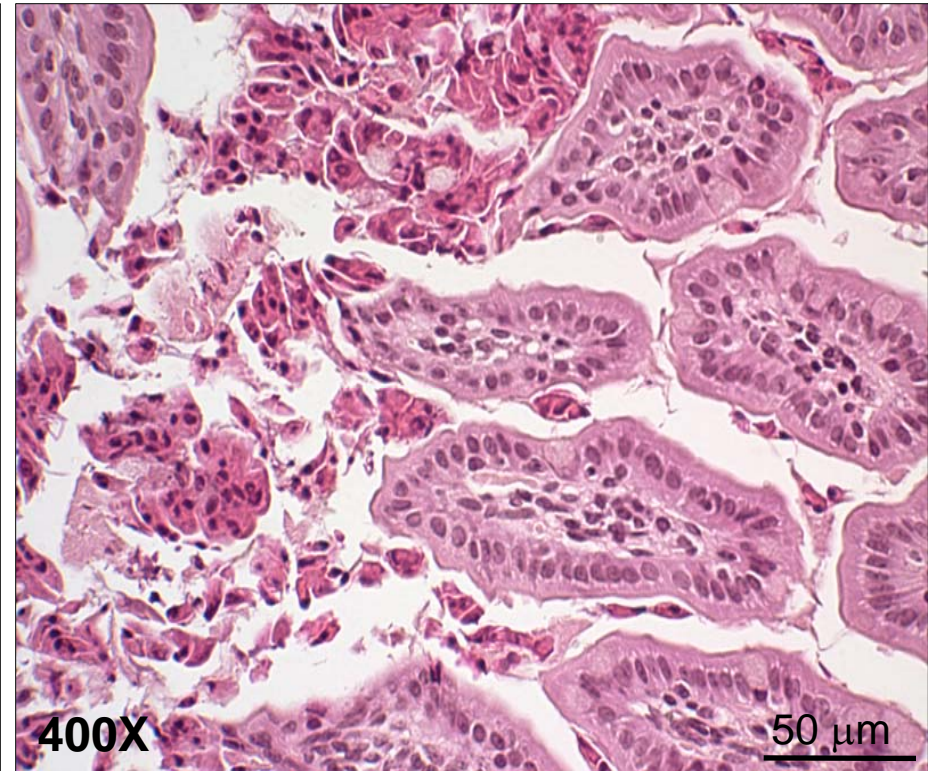
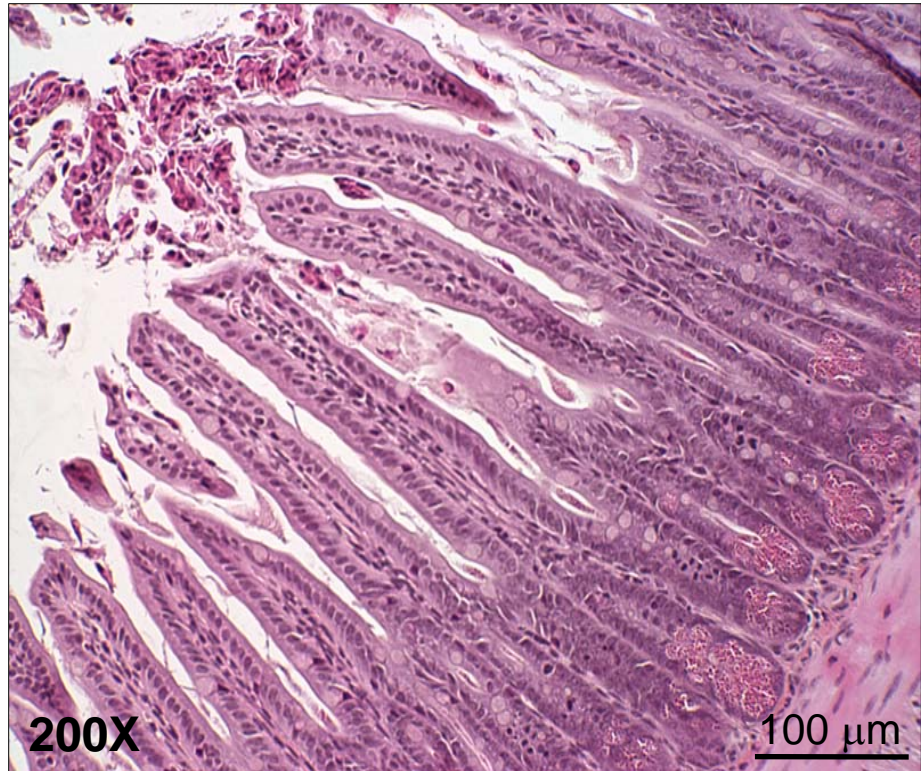


# Supplemental Figure 3



# Supplemental Figure 4

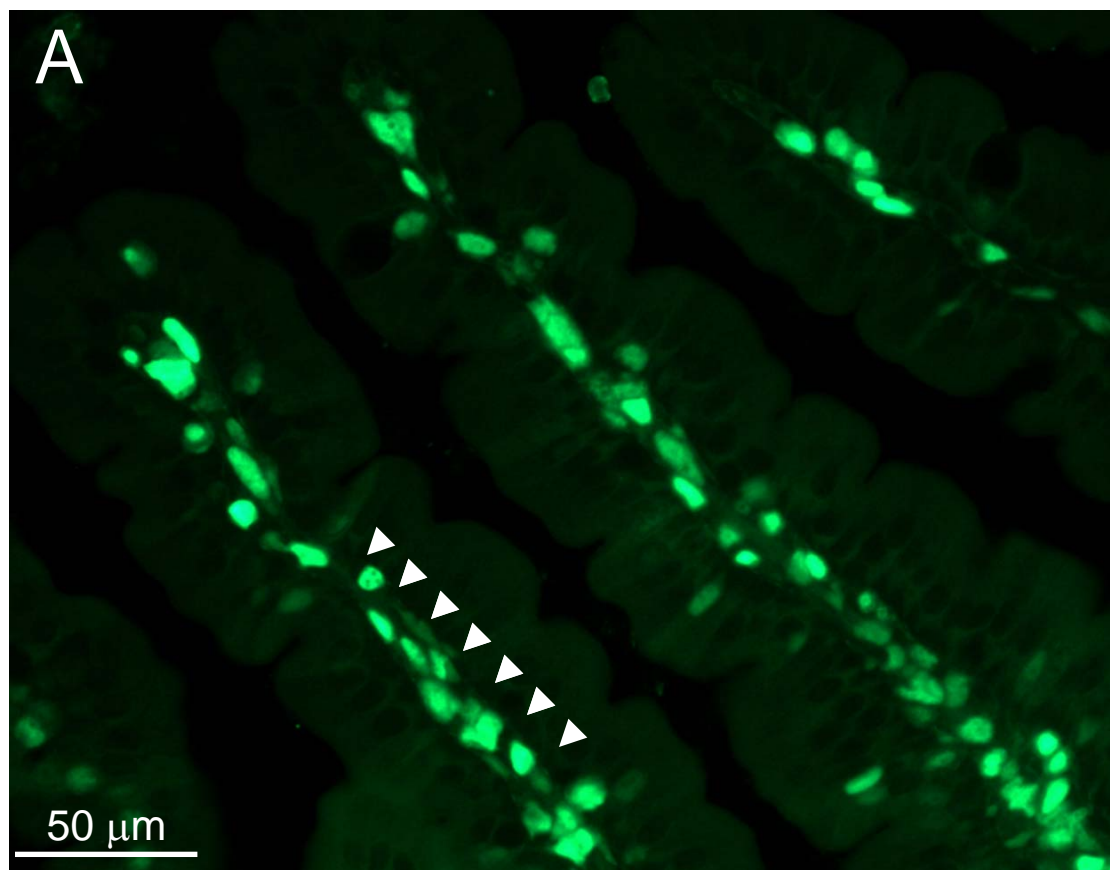
5 hrs after Unilateral nephrectomy



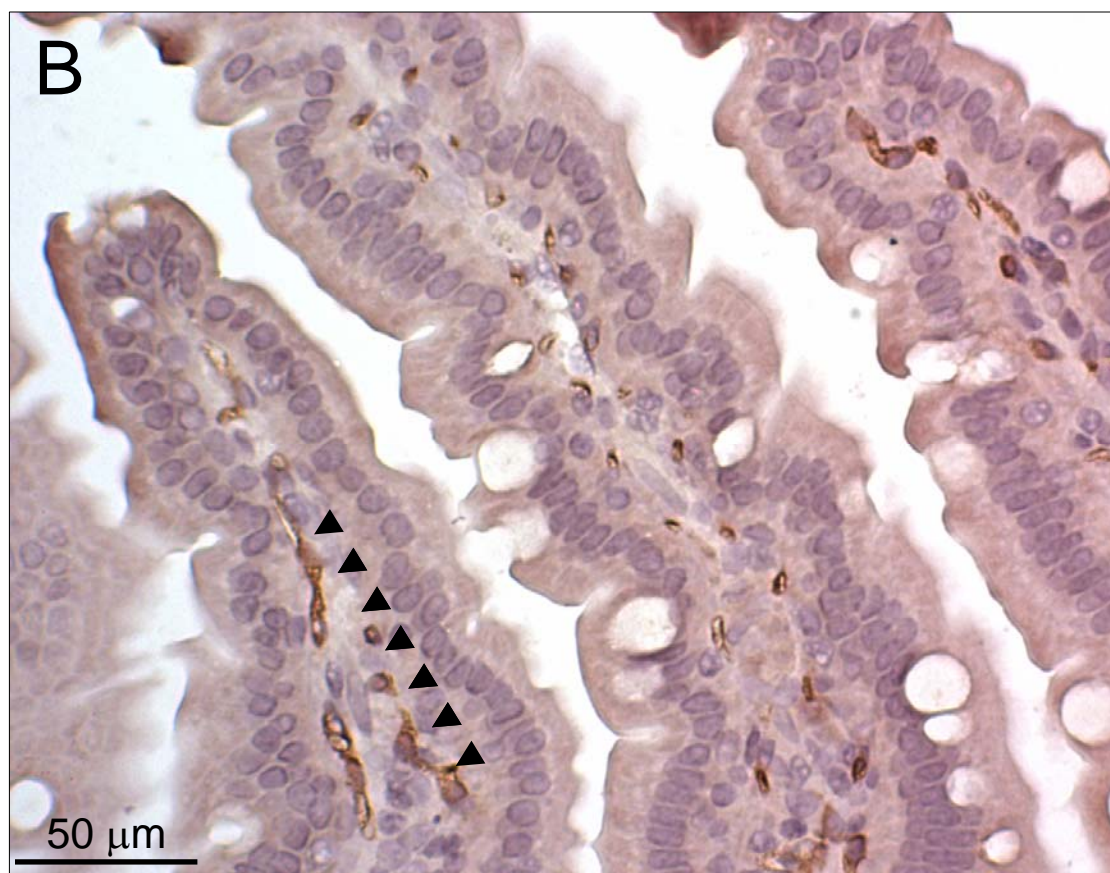


**5 hrs after bilateral nephrectomy**

**TUNEL stain**



**CD34 stain**



**400X**

**Supplemental Figure 6**

