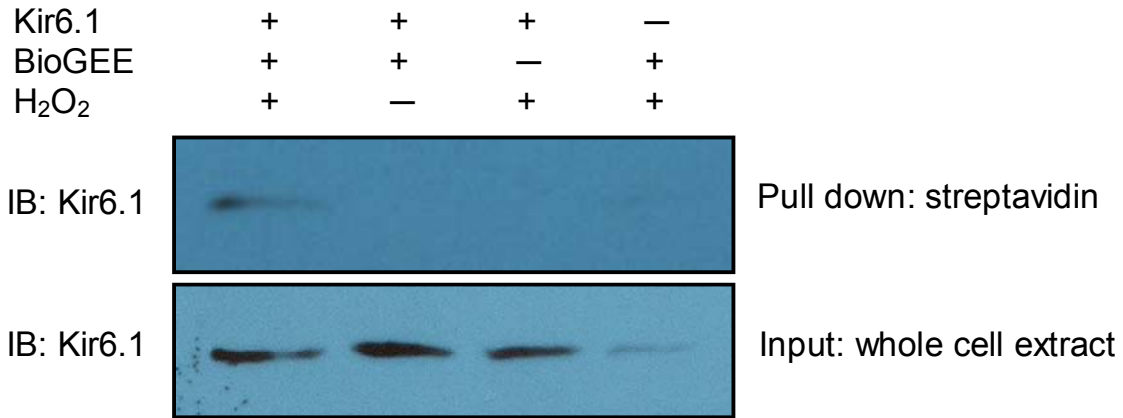


## Supplemental Materials



**Supplemental Figure 1.** HEK293 cells transfected with Kir6.1/SUR2B channel were lysed with RIPA buffer. Kir6.1 proteins were detected in whole cell lysis regardless of the treatments (lower panel). Minimum amounts of native Kir6.1 proteins were detected in HEK293 cells without the transfection. The protein samples that were obtained from the cells treated with both H<sub>2</sub>O<sub>2</sub> and BioGEE showed a clear band in the streptavidin pull-down assay (upper panel).