

Figure S1

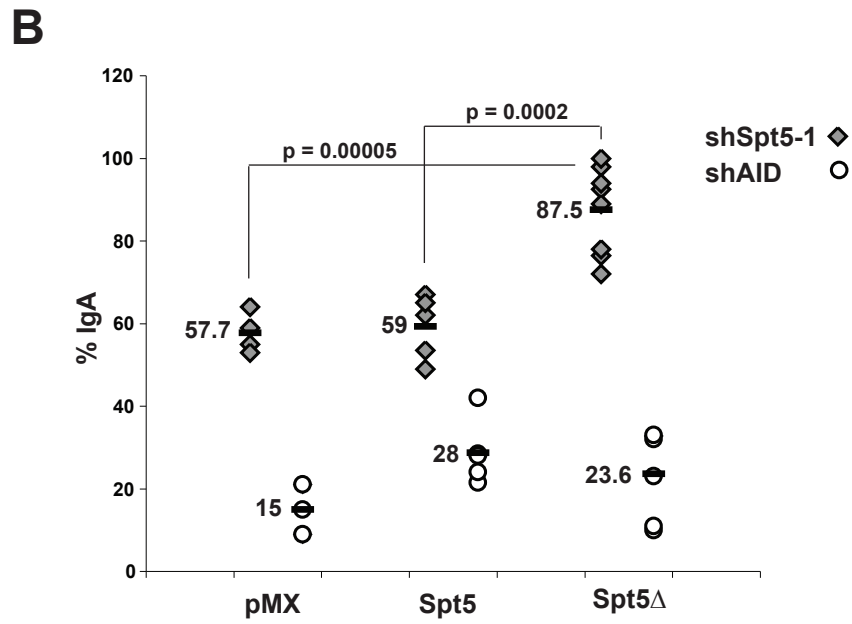
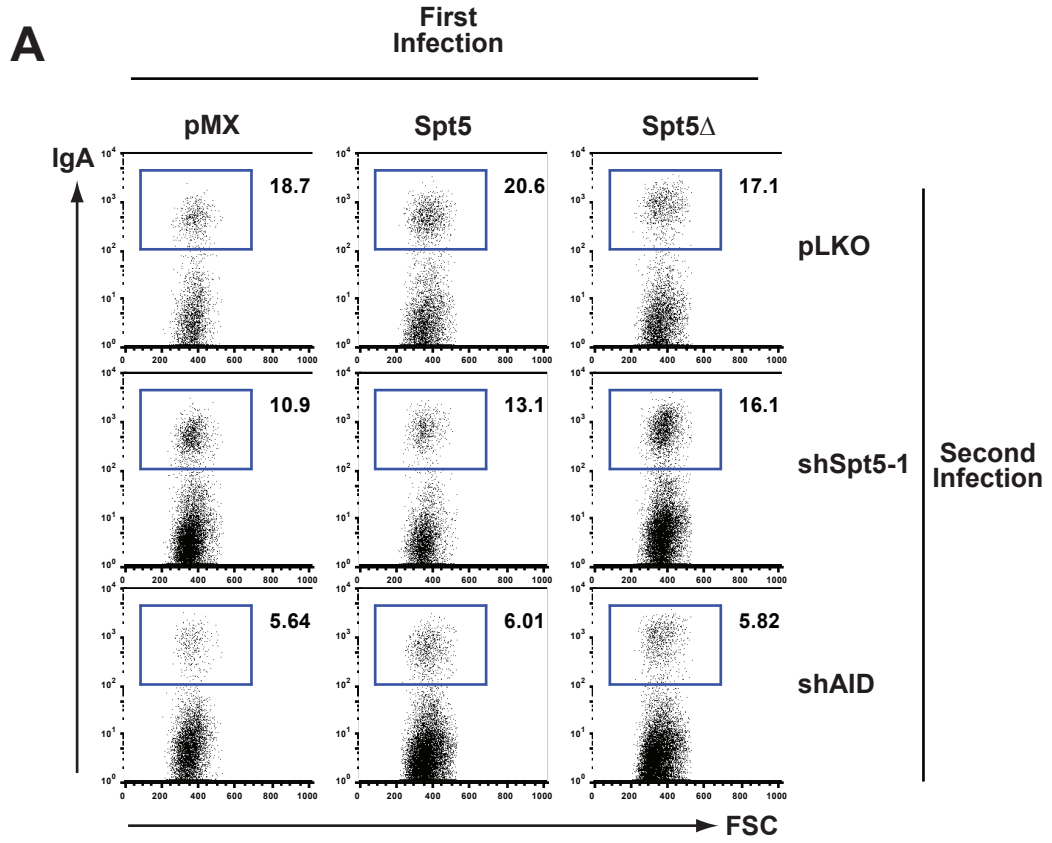


Figure S2

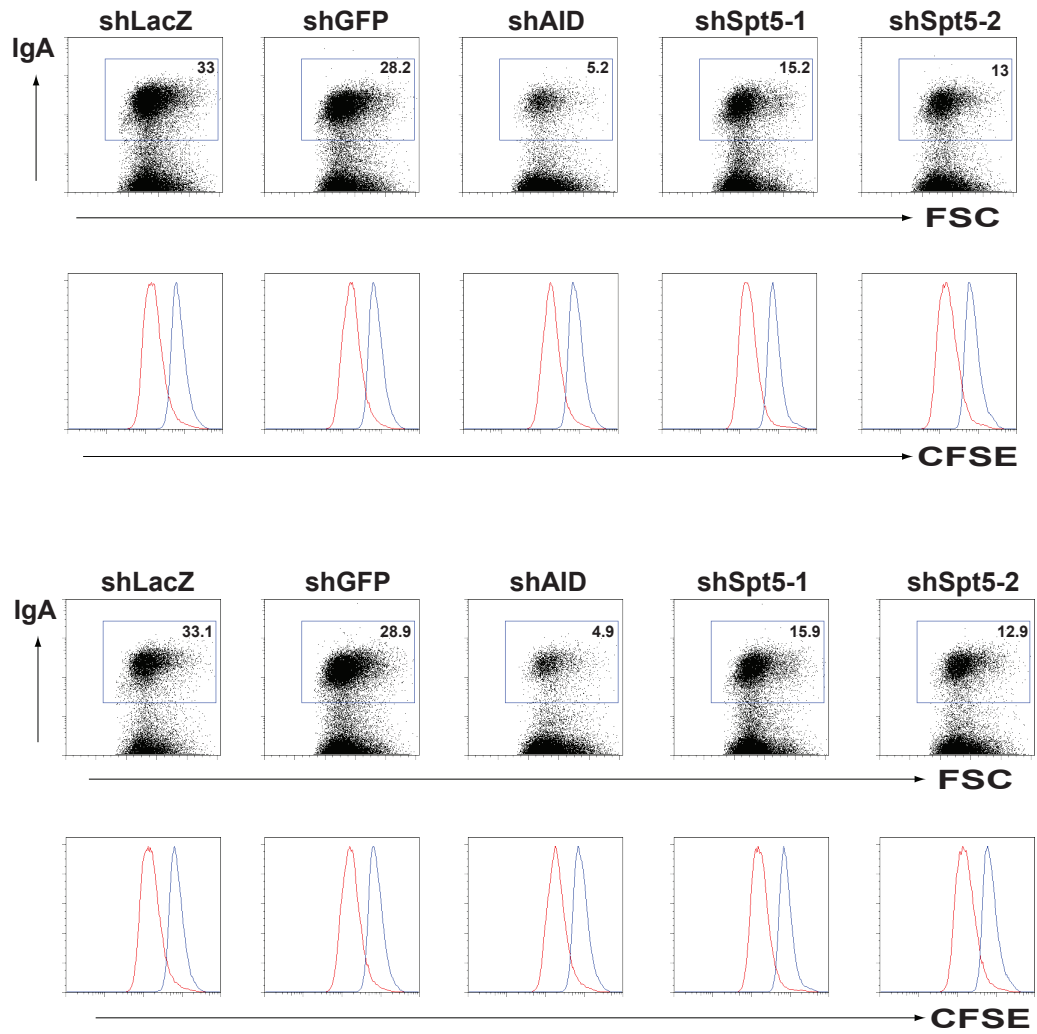


Figure S3

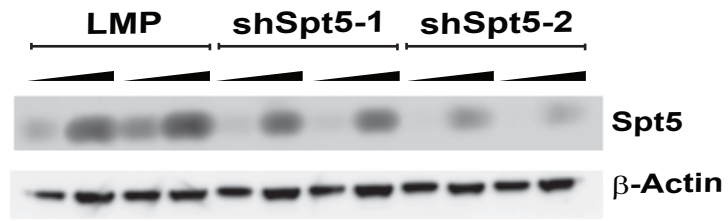


Figure S4

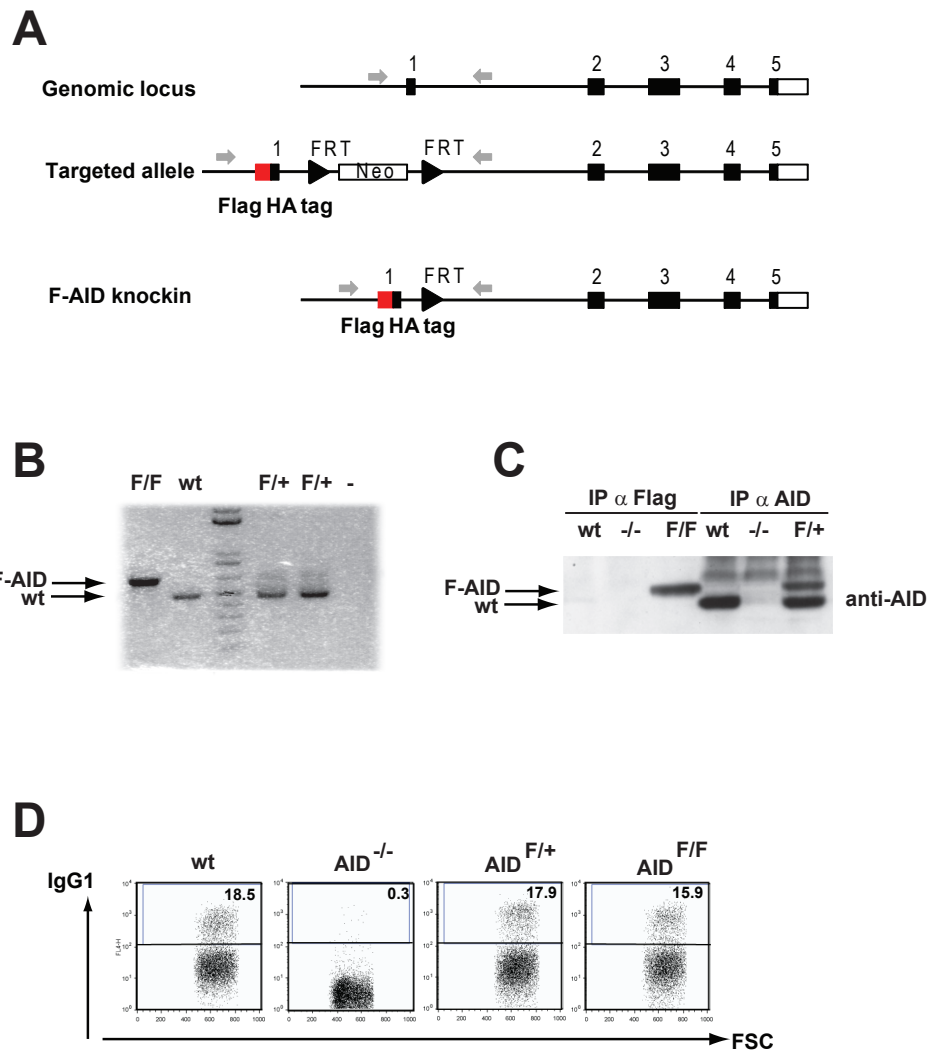


Figure S5

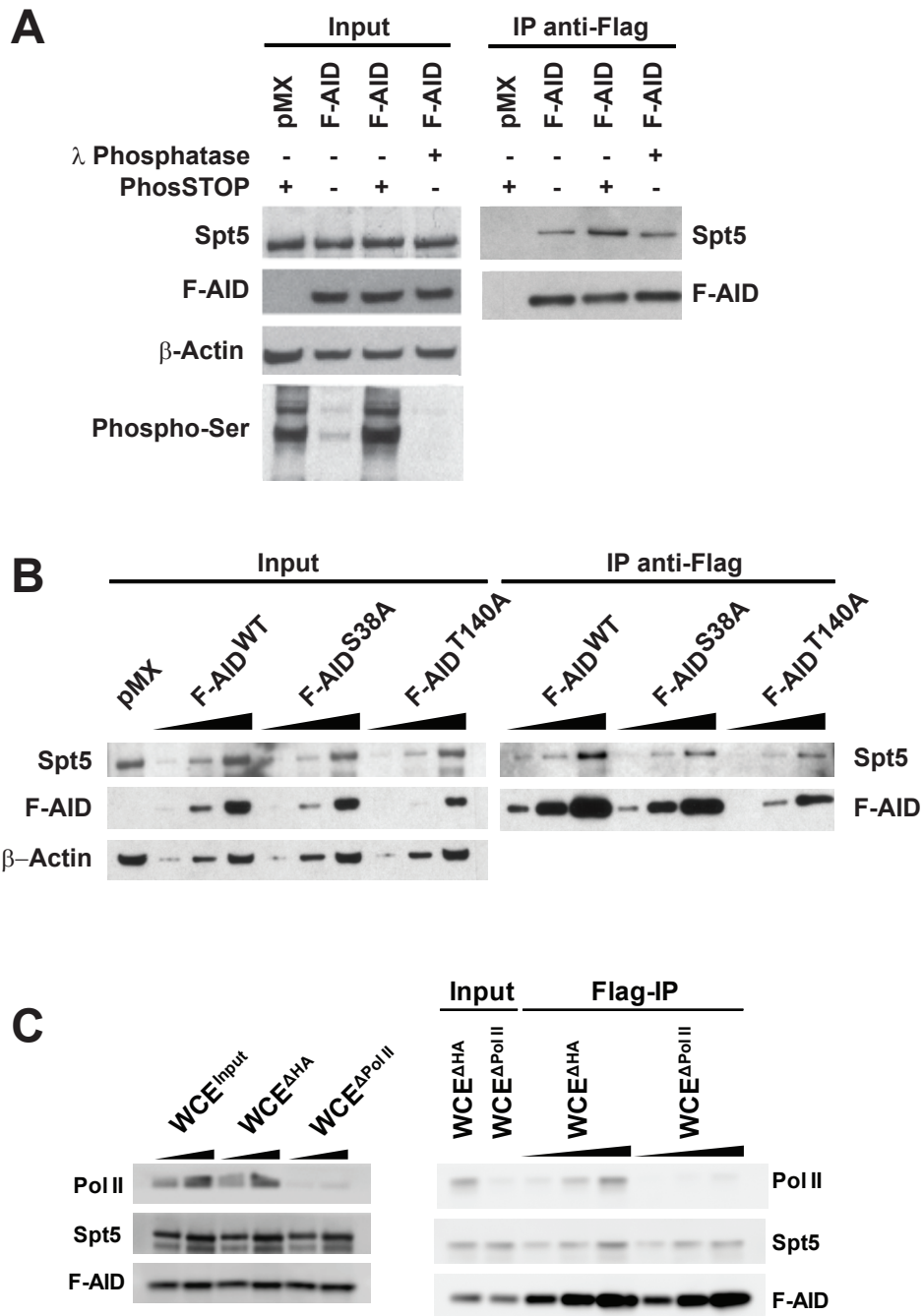


Figure S6

Summary of mutation analysis on Spt5^{hi} and Spt5^{lo} genes from *Ig κ*AID and AID^{-/-} B cells, as shown in Figure 6A, represented as unique mutations/nucleotides analyzed. P values were calculated by the Student's T test.

Spt5 ^{hi}		Actb	B2M	Gas5	H3f3b	Hnrnpa2b1	miR142	Ncl	Rpl3	Rps12	Tmsb4x
	AID^{-/-}	0/52500	2/78000	6/131733	0/56700	6/43860	6/45258	10/136409	3/81524	4/80306	0/43850
	<i>Ig κ</i>AID	7/27750	14/76234	28/129883	5/58500	28/66220	29/49336	38/144387	16/87478	15/84370	9/54940
	p value	0.006	0.002	0.0003	0.02	0.0008	0.001	0.004	0.005	0.009	0.002
Spt5 ^{lo}		1110020P15Rik	Eif3i	Laptn5	Mif	Psma2	Psma4	Rexo1	Eef1g		
	AID^{-/-}	3/103492	3/49600	1/39000	4/68800	1/49500	3/71930	2/31000	6/64500		
	<i>Ig κ</i>AID	10/104513	5/50400	0/27600	7/63200	1/52250	6/76080	1/27280	10/48600		
	p value	0.101	0.78	0.32	0.31	0.98	0.65	0.93	0.08		