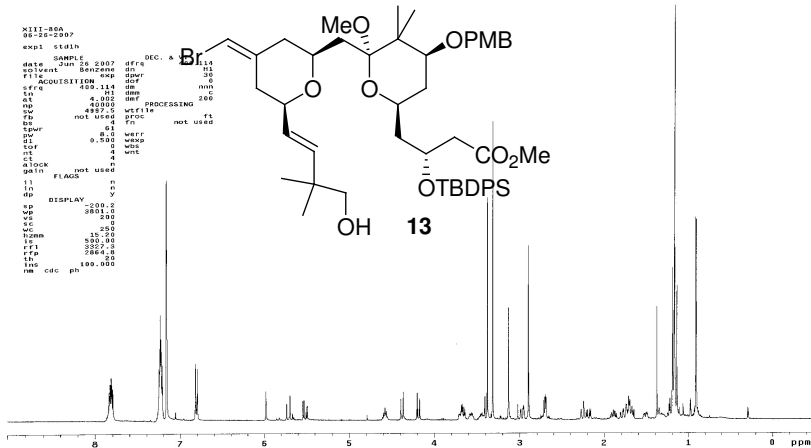
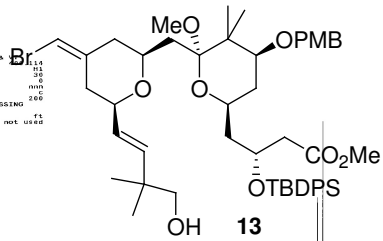


MI11-800
06-26-2007

```

=====
EXP# 01314
DATE_ SAMPLE_ 06-26-2007 09:11
SOLVENT_ Benzene-d6
ACQUISITION_ 400.134
SFR_ 100.618
IN_ 122
AQ_ 1.195
NP_ 2288.0
SD_ 1382.0
SPWR_ 0.5
SC_ 0.150
SOL_ 0
SI_ 4
STOCK_ not used
GAIN_ not used
=====
=====
IN_ n
IN_ n
DISP_ y
SP_ 200.2
VP_ 8802.0
VS_ 388
SC_ 705
V2MM_ 8.27
IN_ 4
RFI_ 1382.0
IR_ 1267.3
INS_ 100.000
=====

```

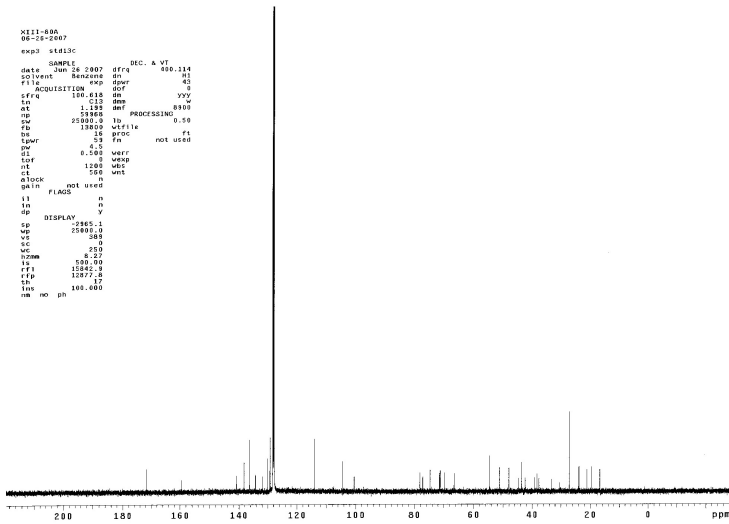


MI11-800
06-26-2007

```

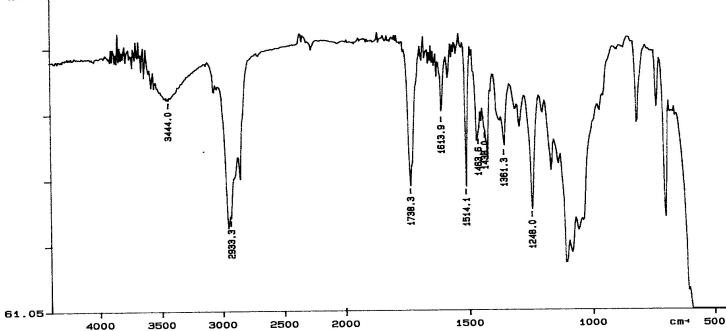
=====
EXP# 01314
DATE_ SAMPLE_ 06-26-2007 09:11
SOLVENT_ Benzene-d6
ACQUISITION_ 100.618
SFR_ 100.618
IN_ 122
AQ_ 1.195
NP_ 2288.0
SD_ 1382.0
SPWR_ 0.5
SC_ 0.150
SOL_ 0
SI_ 4
STOCK_ not used
GAIN_ not used
=====
=====
IN_ n
IN_ n
DISP_ y
SP_ 200.2
VP_ 8802.0
VS_ 388
SC_ 705
V2MM_ 8.27
IN_ 4
RFI_ 1382.0
IR_ 1267.3
INS_ 100.000
=====

```

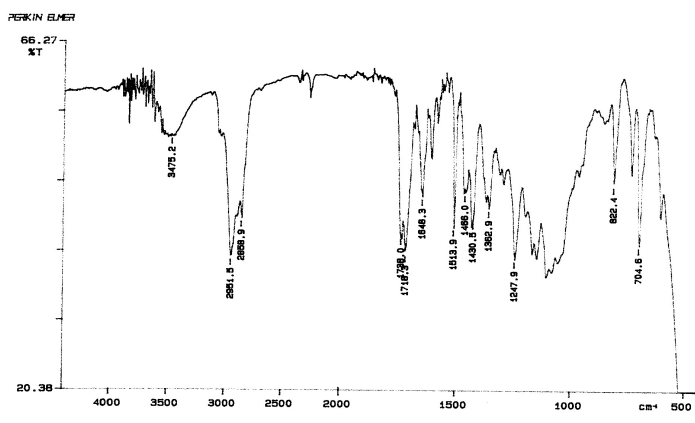
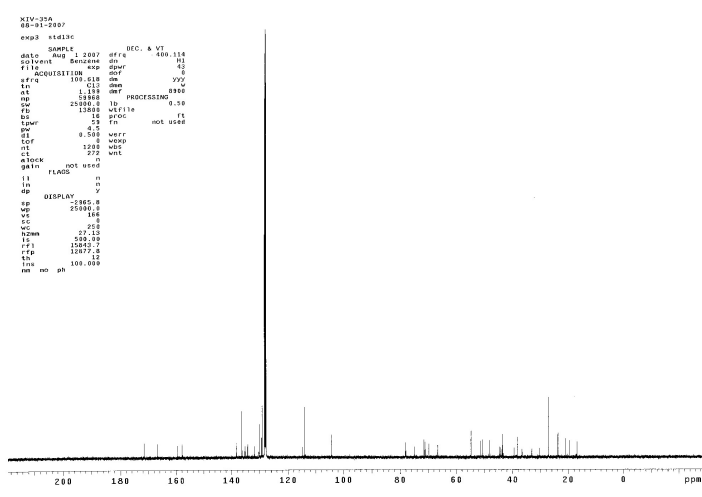
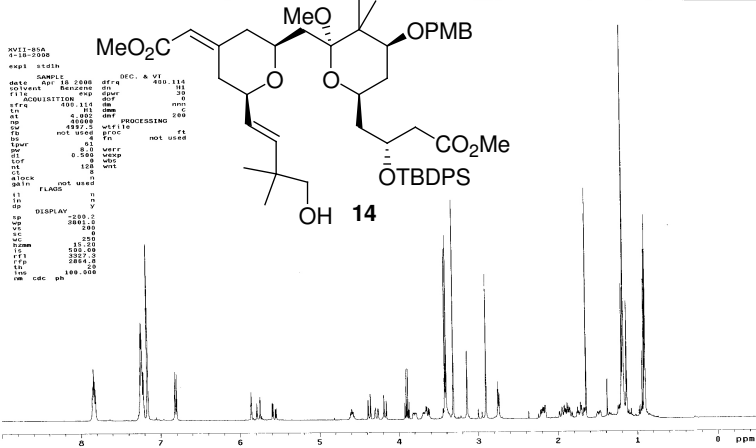


PERKIN ELMER

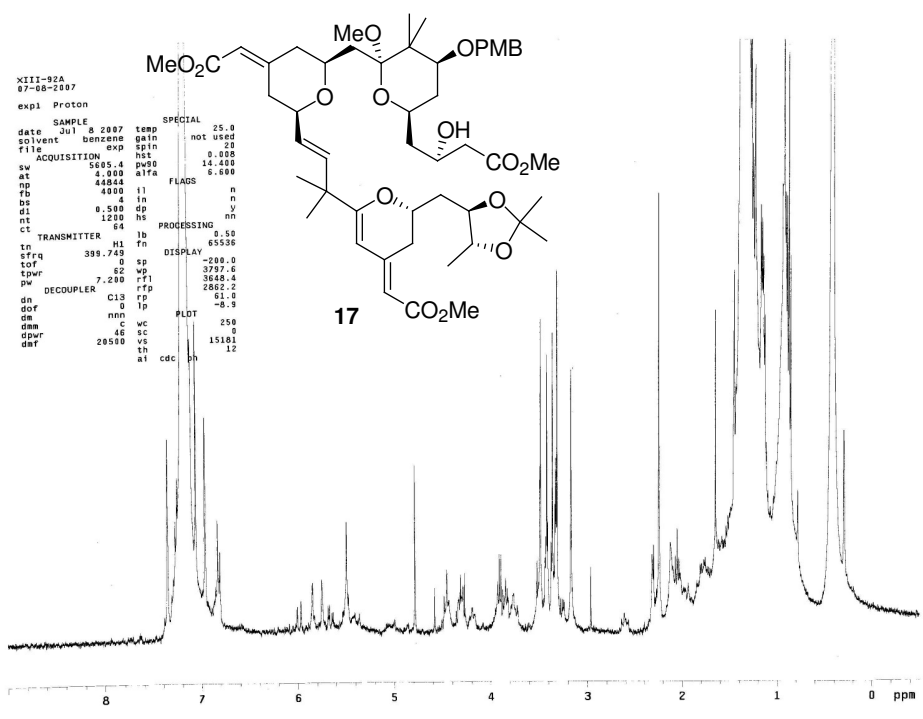
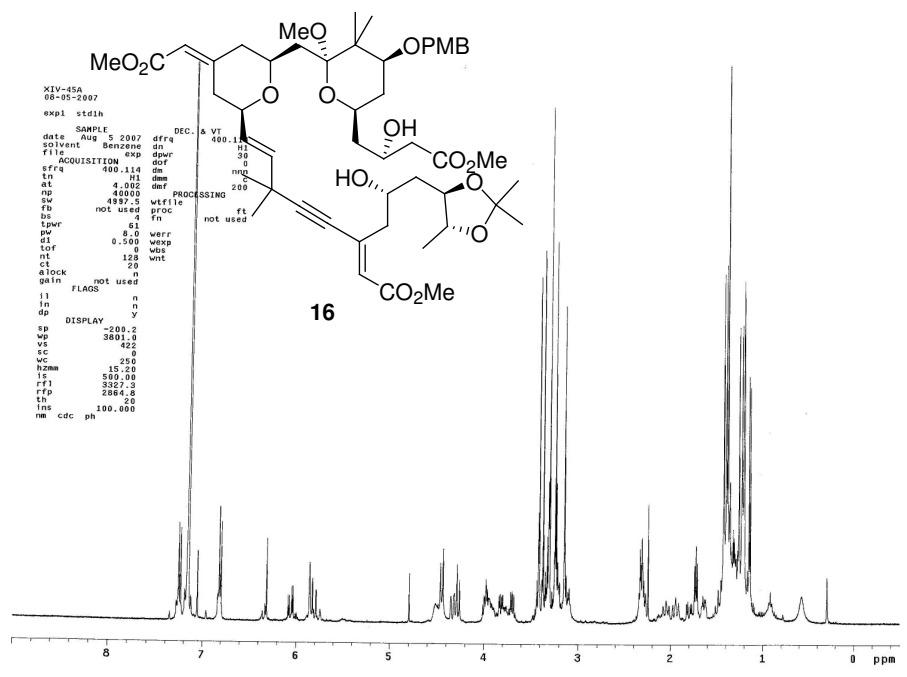
84.63
XT



07/06/26 09:11
X: 4 scans, 4.0cm-1, flat



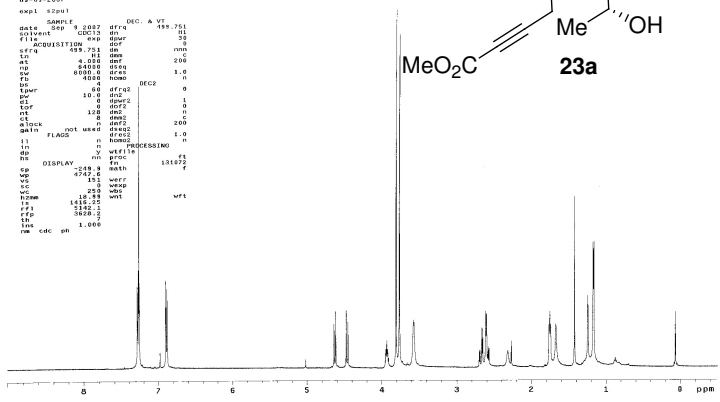
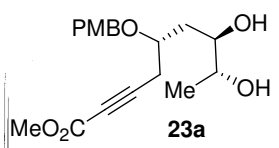
07/08/01 13:02
 X: 4 scans, 4.0cm-1




```

XIV-79A
03-09-2002
0901 0201
NAME SAMPLE DEC. & VT H1
ZVLWHT 0013 001 159.751
ACQUISITION 001 001 0
OFFN 859.751 001 1000
IN 0.020 001 200
PC 80000 0100 1.0
DS 0
SPWR 0.0 DEFC2 0
RG 10.0 001 1
RF 0.0 001 0
CT 0.0 001 0
GLOCK 001 001 200
GATH FLAG0 mol used 1.0
II n n2000 PROCESSING 0
IN y Y T1 10174.1
NS m M F1 1008.5
IN 10 1.000
IN 0.000

```



```

XIV-79A
03-09-2002
0905 0201
NAME SAMPLE DEC. & VT H1
ZVLWHT 0013 001 -011.0
ACQUISITION 001 001 370
OFFN 125.076 001 851
IN 0.020 001 1000
PC 80000 0100 1.0
DS 0
SPWR 0.0 DEFC2 0
RG 10.0 001 1
RF 0.0 001 0
CT 0.0 001 0
GLOCK 001 001 200
GATH FLAG0 mol used 1.0
II n n2000 PROCESSING 0
IN y Y T1 10174.1
NS m M F1 1008.5
IN 10 1.000
IN 0.000

```

