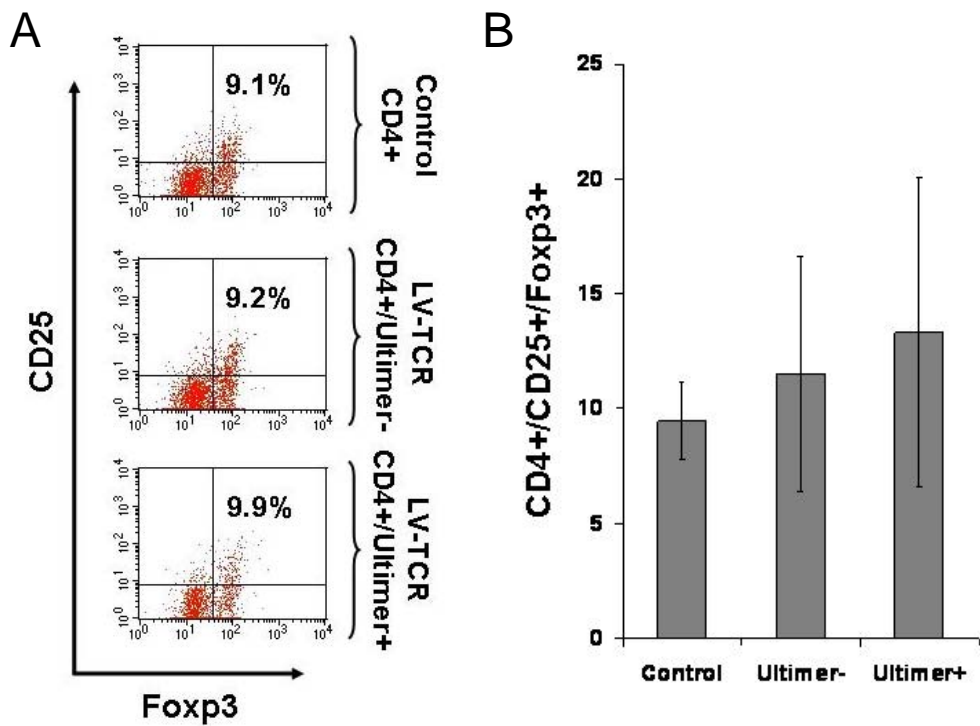


Supplemental Figure 1

Density of mTCR β expression is lower in the CD4+/Ultimer+ subpopulation. Flow cytometry analysis of PB at 12 months post-transplantation: statistically significant differences in mean fluorescence intensity (MFI) of mTCR β expression between CD4+/Ultimer+ and CD4+/Ultimer- subpopulations (224 ± 44 vs. 577 ± 46 , $p = 0.0005$) is observed.



Supplemental Figure 2

Treg levels are similar between control and LV-TCR transplants. **A**, Splenocytes from both control and LV-TCR transplants at 6 months post-transplantation were obtained and stained with antibodies against CD4, TRP1-Ultimer, CD25 and Foxp3 and analyzed by flow cytometry. **B**, Summary of 6 month Treg levels in control, LV-TCR Ultimer-, LV-TCR Ultimer+ subpopulations. P value is non-significant between groups. Data (mean \pm SEM; $n = 4$ per group) and flow cytometry are representative of 2 independent experiments.