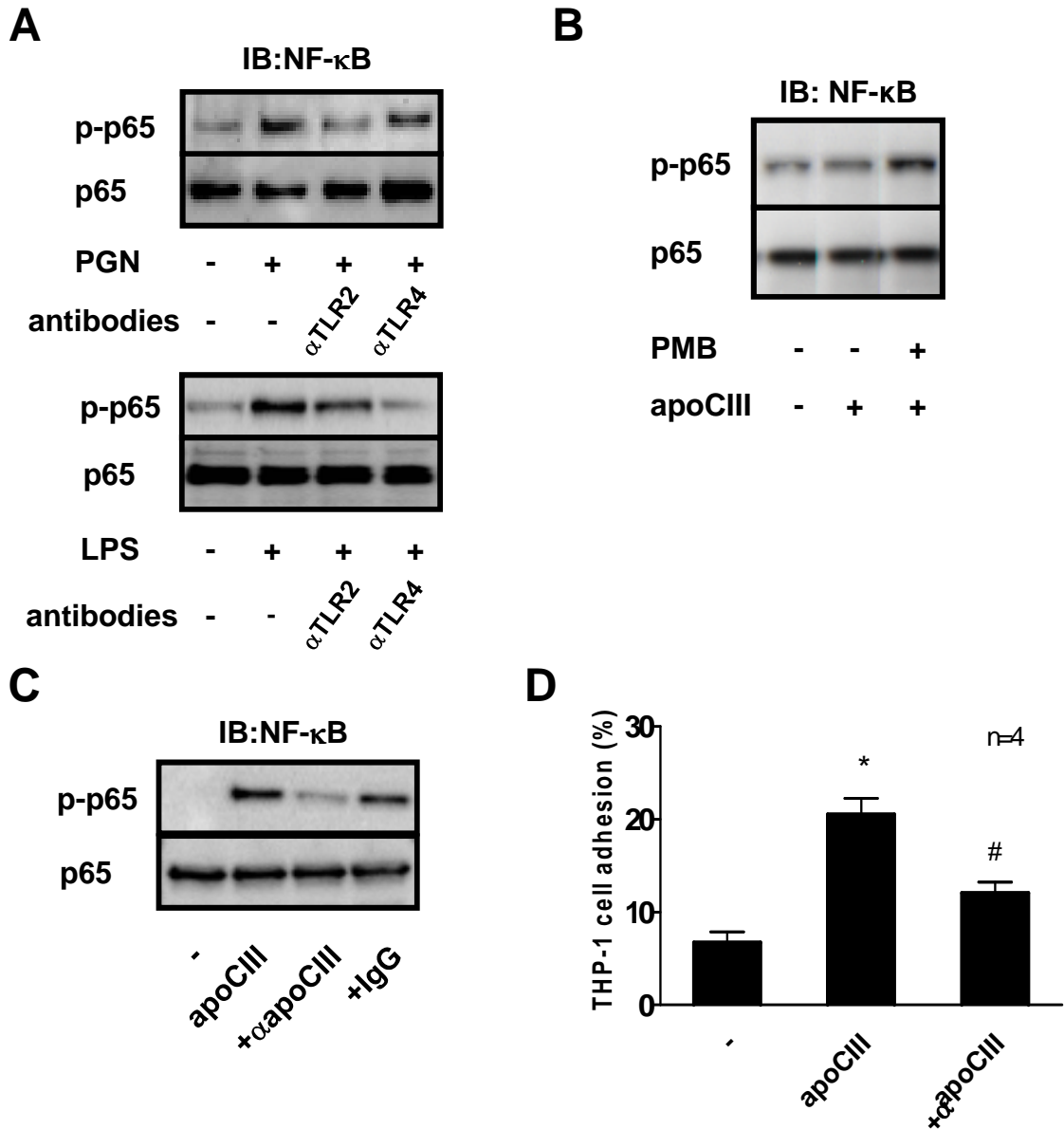
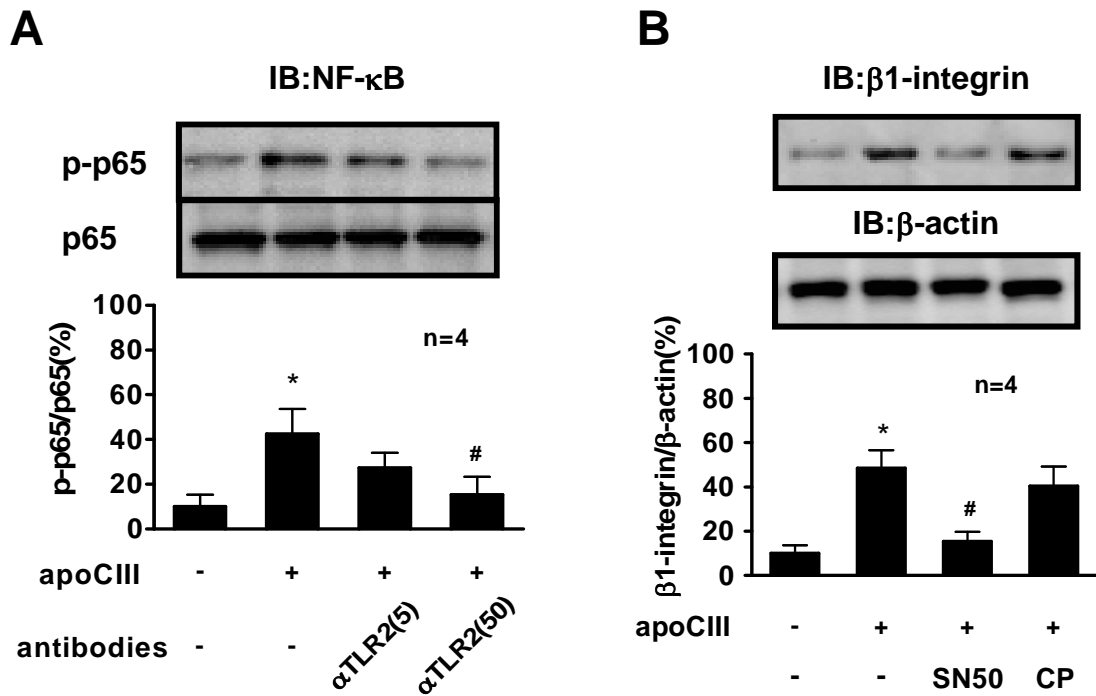


Supplemental Figure 1



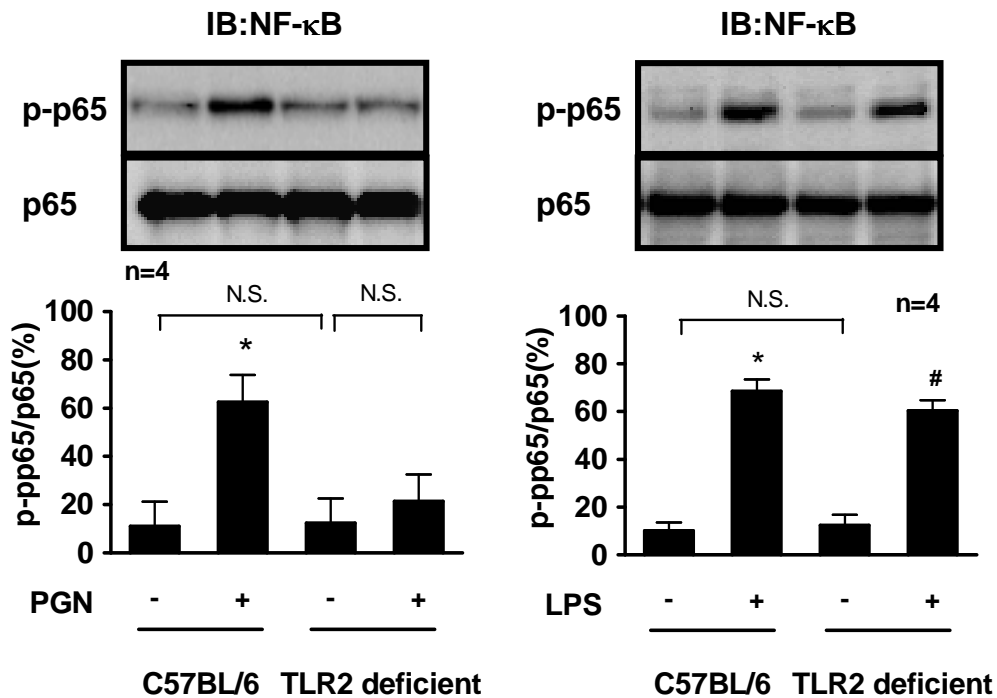
(A) THP-1 cells were pretreated with indicated antibodies (50 μ g/mL), and then incubated with peptidoglycan (PGN) (10 μ g/ml) or LPS (200 ng/ml) for 2 hours. (B) THP-1 cells were incubated with apoCIII (100 μ g/mL) for 2 hours in the presence or absence of polymyxin B (PMB) (0.5 μ g/ml). (C, D) THP-1 cells were incubated with apoCIII (100 μ g/mL) for 2 hours (C) or 8 hours (D). In some experiments, apoCIII was pretreated with indicated antibodies (50 μ g/mL) for 30 minutes. * p <0.05 vs. apoCIII(-), # p <0.05 vs. apoCIII alone. Blots represent 3 independent experiments using apoCIII from 3 different donors that provided similar results (B, C).

Supplemental Figure 2



(A) Cultured hTLR2-293 cells were incubated with FITC-labeled apoCIII (100 μ g/mL) for 2 hours. In some experiments, the cells were pretreated with indicated antibodies (50 μ g/mL) for 30 minutes. * p <0.01 vs. apoCIII(-)/antibodies(-), # p <0.05 vs. apoCIII(+)/antibodies(-). **(B)** Cultured hTLR2-293 cells were incubated with FITC-labeled apoCIII (100 μ g/mL) for 8 hours. In some experiments, the cells were pretreated with NF- κ B inhibitor SN50 or control scrambled peptide (CP) (20 μ mol/mL) for 30 minutes. * p <0.01 vs. apoCIII(-)/inhibitors(-), # p <0.05 vs. apoCIII(+)/inhibitors(-). Blots represent 4 independent experiments using apoCIII from 4 different donors that provided similar results.

Supplemental Figure 3



Monocytes isolated from indicated mice were incubated with peptidoglycan (PGN) (10 μ g/ml) or LPS (200 ng/ml) for 2 hours. * $p < 0.01$ vs. PGN(-) or LPS(-)/C57BL/6, # $p < 0.01$ vs. LPS(-)/TLR2 deficient. Blots represent 4 independent experiments that provided similar results.