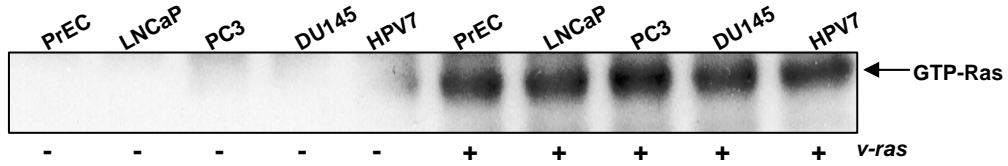


Supplementary Data

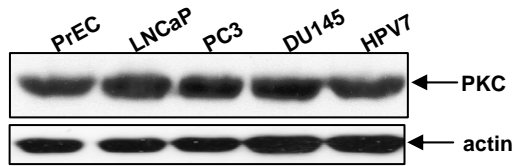
Supplementary Figure S1. (A) Ras activity in the cells with or without expressing *v-ras* was analyzed by the Active Ras Pull-Down and Detection kit. (B) PKC expression in the cells was analyzed by immunoblotting using anti-pan-PKC antibody. The evenly loading of total proteins was normalized by actin. (C) Lysates from untreated or treated cells were immunoprecipitated with anti-pan-PKC antibody. The immunocomplexes were incubated with [³²P]γ-ATP and the peptide substrates to determine PKC activity. The error bars represent SD from 3 independent experiments (n = 3, *p* < 0.05).

Supplementary Figure S2. (A) and (B) After the transient introduction of *dn-* (A) or *wt-Akt* (B), the expression of tagged HA was measured by immunoblotting. Equal loading total proteins were verified by actin expression.

A



B



C

