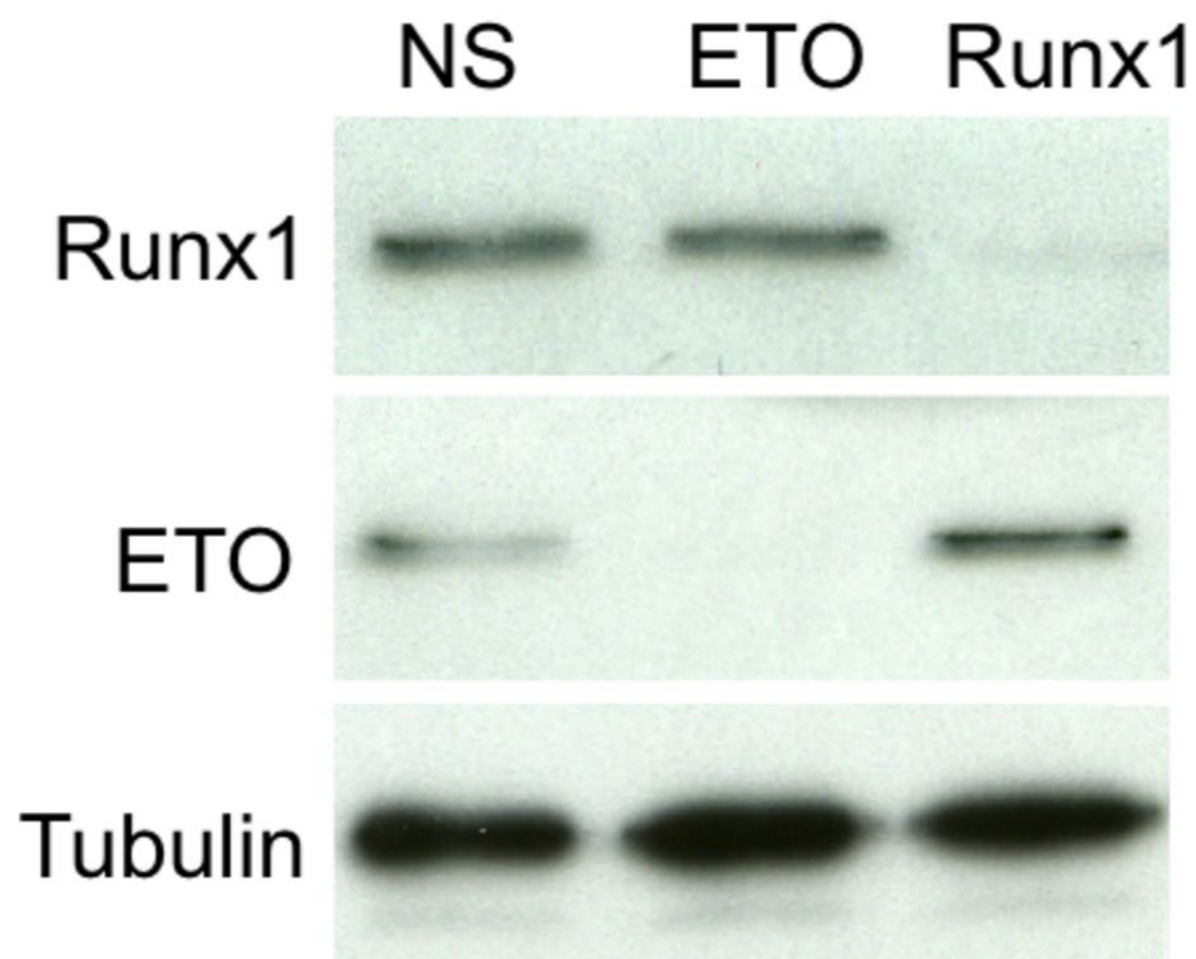


**Figure S4: Genomic location and promoter sequence of the MGC11271 gene**



A western blot analysis of the total cell lysates from Human erythro-leukemia K562 cells transfected for 48 hours with a non-specific (NS), ETO-specific, or Runx1-specific small interfering RNA oligo. Western blot was carried out using rabbit polyclonal antibodies against Runx1 or ETO and a mouse monoclonal antibody raised against Tubulin to control for protein loading.