

SI Appendix

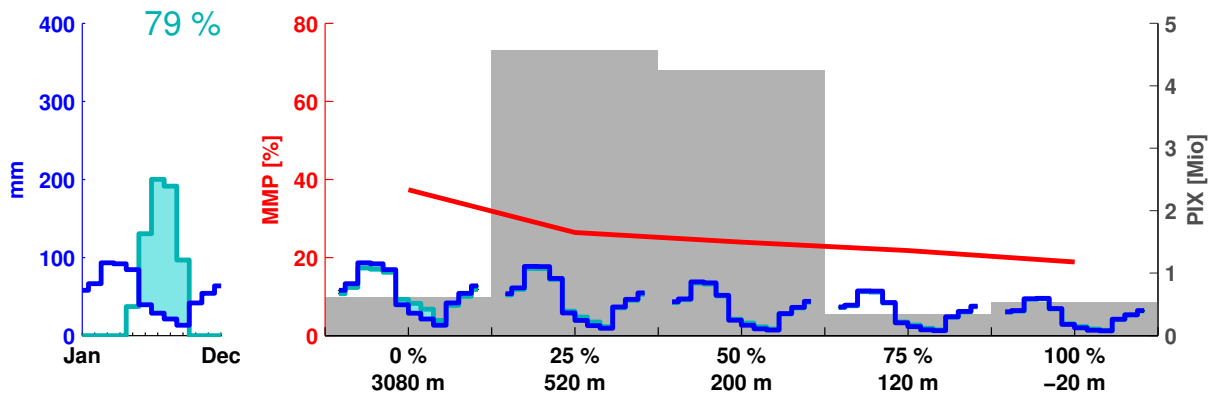
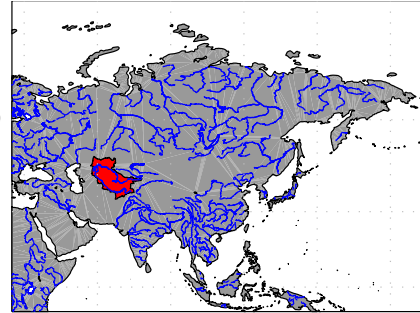
Table 1: Annual percentage of precipitation affected by the glaciers (AP), MMP, and the month of occurrence of the MMP for each altitude band. Numbers in parentheses denote month of MMP.

Basin name	at z_0	altitude bands					Parameter
		0 %	25 %	50 %	75 %	100 %	
Aral Sea	78.72	5.83	2.41	1.88	1.7	1.53	AP [%]
		37.36 (8)	26.42 (8)	23.95 (8)	21.78 (8)	18.84 (8)	MMP [%] (month)
Brahmaputra	17.01	0.98	0.59	0.33	0.22	0.17	AP [%]
		2.26 (9)	1.34 (9)	0.78 (9)	0.53 (9)	0.41 (9)	MMP [%] (month)
Clutha River	38.83	1.17	0.83	0.67	0.56	0.49	AP [%]
		6.36 (2)	4.51 (2)	3.62 (2)	3.00 (2)	2.55 (2)	MMP [%] (month)
Danube	52.52	4.39	0.2	0.12	0.08	0.07	AP [%]
		11.30 (8)	0.63 (8)	0.36 (8)	0.27 (8)	0.22 (8)	MMP [%] (month)
Ganges	33.11	5.01	0.42	0.26	0.18	0.13	AP [%]
		13.83 (6)	1.09 (6)	0.72 (6)	0.53 (6)	0.33 (6)	MMP [%] (month)
Huang He	24.47	0.06	0.01	0.01	0.01	0.00	AP [%]
		0.16 (8)	0.03 (8)	0.02 (8)	0.01 (8)	0.01 (8)	MMP [%] (month)
Indigirka	40.39	1	0.16	0.09	0.07	0.06	AP [%]
		3.42 (7)	0.55 (7)	0.31 (7)	0.24 (7)	0.20 (7)	MMP [%] (month)
Indus	55.48	4.71	1.72	0.98	0.77	0.72	AP [%]
		11.64 (7)	4.89 (7)	2.13 (7)	1.50 (6)	1.40 (6)	MMP [%] (month)
Irrawaddy	25.04	0.19	0.00	0.00	0.00	0.00	AP [%]
		0.45 (9)	0.01 (9)	0.00 (9)	0.00 (9)	0.00 (9)	MMP [%] (month)
Kuban	53.02	2.23	0.69	0.45	0.35	0.28	AP [%]
		8.39 (8)	2.58 (8)	1.66 (8)	1.31 (8)	1.09 (8)	MMP [%] (month)
Po	54.62	5.98	2.06	1.32	0.96	0.78	AP [%]
		19.93 (7)	8.21 (7)	5.88 (7)	4.58 (7)	3.84 (7)	MMP [%] (month)
Rhine	43.71	2.94	0.5	0.31	0.22	0.17	AP [%]
		8.48 (7)	1.58 (7)	1.03 (7)	0.75 (7)	0.59 (7)	MMP [%] (month)
Rhone	50.96	6.21	2.19	1.44	1.06	0.86	AP [%]
		21.92 (7)	9.50 (7)	6.59 (7)	4.99 (7)	4.19 (7)	MMP [%] (month)
Rio Santa	26.5	5.54	2.82	1.94	1.54	1.41	AP [%]
		71.00 (7)	52.85 (7)	43.67 (7)	39.65 (7)	36.24 (7)	MMP [%] (month)
Tarim	37.74	2.19	1.42	1.26	1.15	1.08	AP [%]
		5.56 (9)	3.36 (9)	2.95 (9)	2.71 (9)	2.54 (9)	MMP [%] (month)
Yangtze	32.96	0.14	0.06	0.04	0.03	0.02	AP [%]
		0.36 (8)	0.17 (8)	0.11 (8)	0.08 (8)	0.07 (8)	MMP [%] (month)
Yukon River	44.85	1.87	1.19	0.89	0.69	0.55	AP [%]
		4.24 (6)	2.60 (6)	1.92 (6)	1.52 (6)	1.30 (6)	MMP [%] (month)

Figures: Equivalents of Figure 1 for each of the basins included in this study, supplemented by the numeric values from table 1.

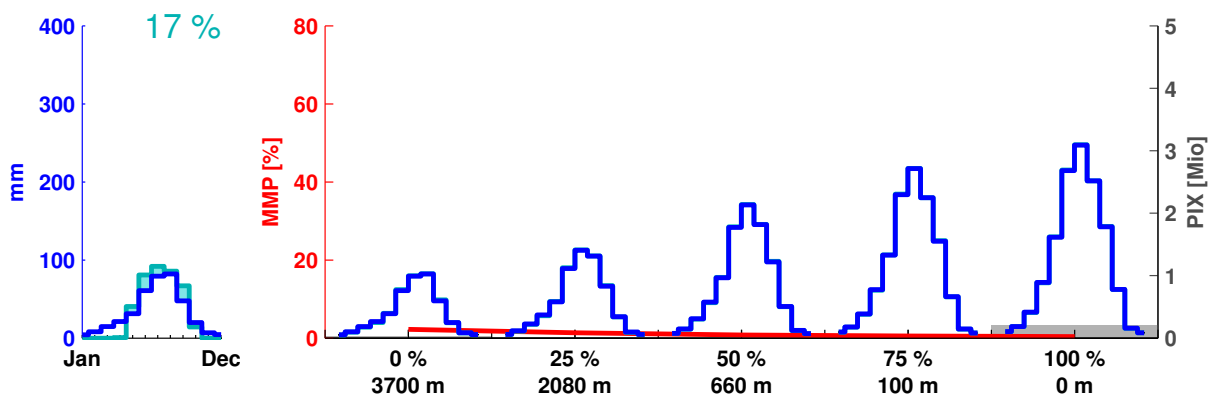
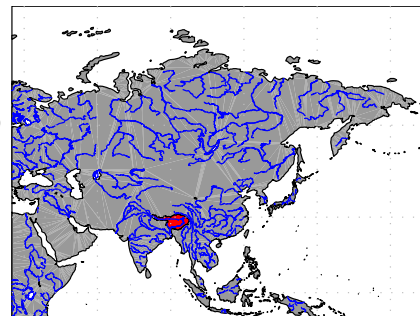
Aral Sea

Total river basin area: 1234075 km²
 Total glacier area: 11319 km² (0.92 % of total river basin area)
 Mean annual precipitation: 309 mm
 Total population: 41.01 Mio. people
 Total PIX: 10.29 Mio. people



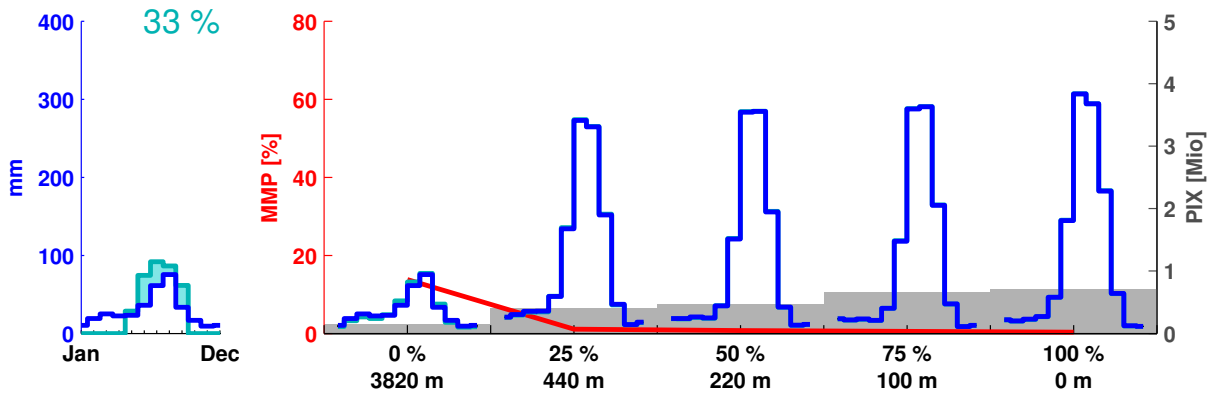
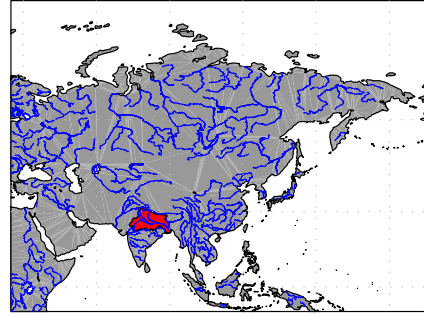
Brahmaputra

Total river basin area: 527666 km²
 Total glacier area: 16118 km² (3.05 % of total river basin area)
 Mean annual precipitation: 1145 mm
 Total population: 62.43 Mio. people
 Total PIX: 0.31 Mio. people



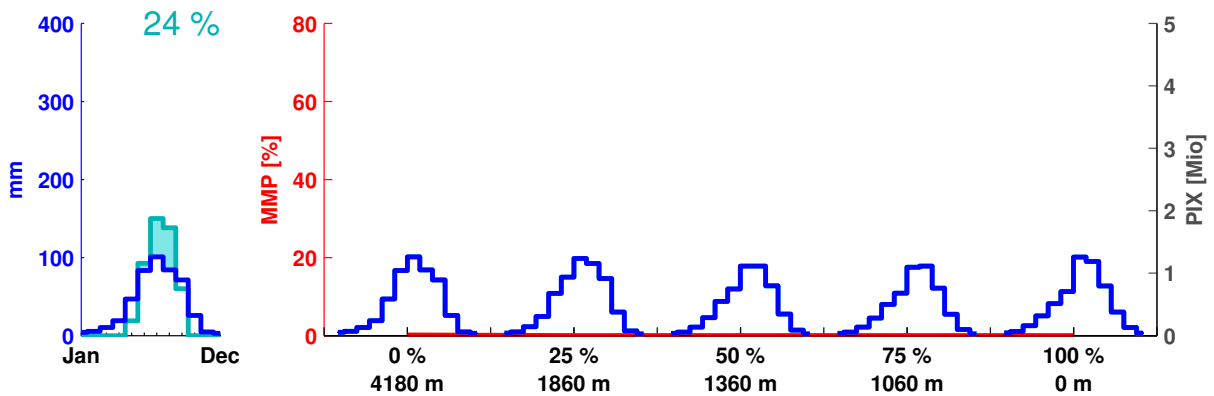
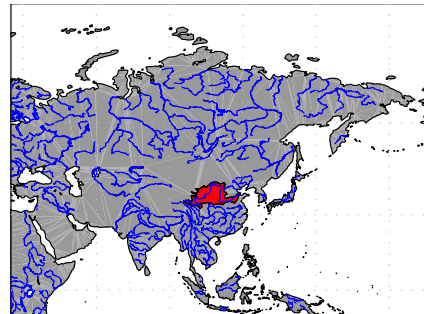
Ganges

Total river basin area: 1023609 km²
 Total glacier area: 12659 km² (1.24 % of total river basin area)
 Mean annual precipitation: 1118 mm
 Total population: 448.98 Mio. people
 Total PIX: 2.40 Mio. people



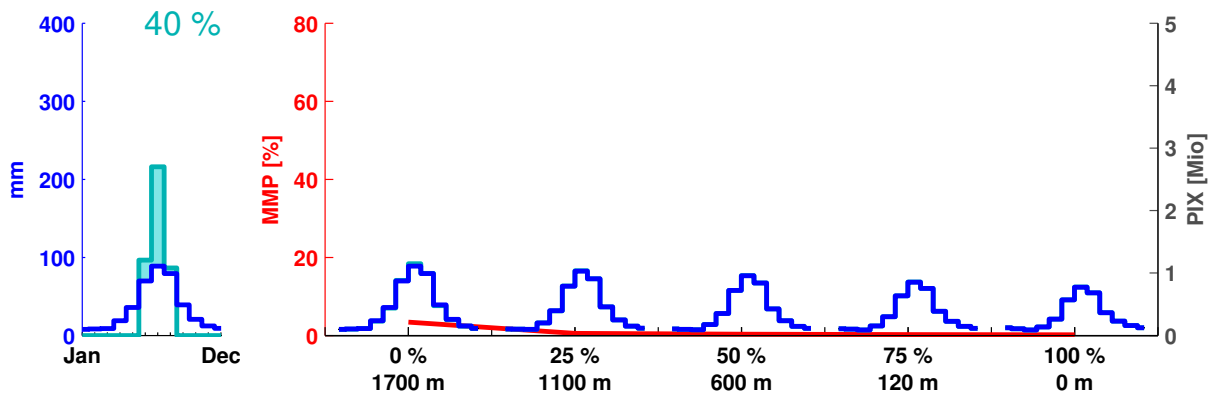
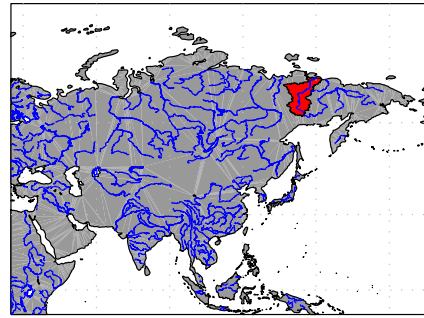
Huang He (Yellow River)

Total river basin area: 988702 km²
 Total glacier area: 172 km² (0.02 % of total river basin area)
 Mean annual precipitation: 447 mm
 Total population: 162.70 Mio. people
 Total PIX: 0.02 Mio. people



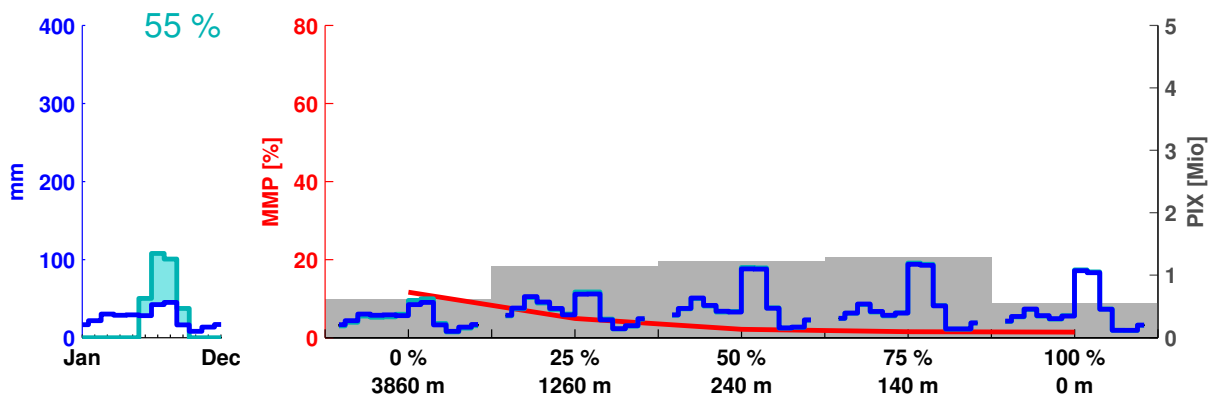
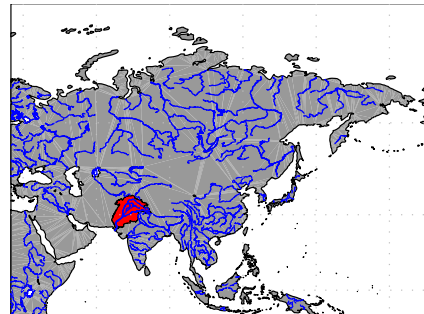
Indigirka

Total river basin area: 341577 km²
 Total glacier area: 338 km² (0.10 % of total river basin area)
 Mean annual precipitation: 290 mm
 Total population: 0.04 Mio. people
 Total PIX: 0.00 Mio. people



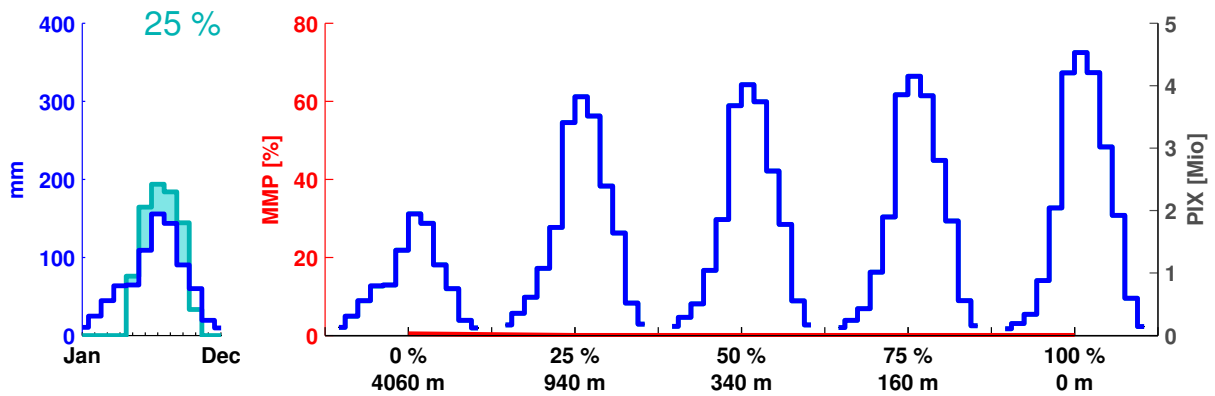
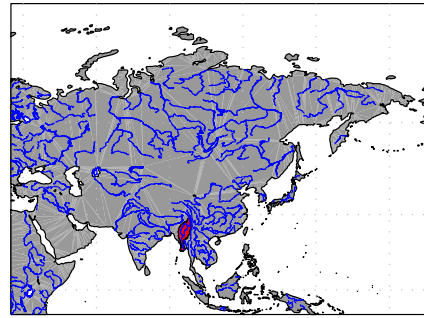
Indus

Total river basin area: 1139814 km²
 Total glacier area: 20325 km² (1.78 % of total river basin area)
 Mean annual precipitation: 405 mm
 Total population: 211.28 Mio. people
 Total PIX: 4.82 Mio. people



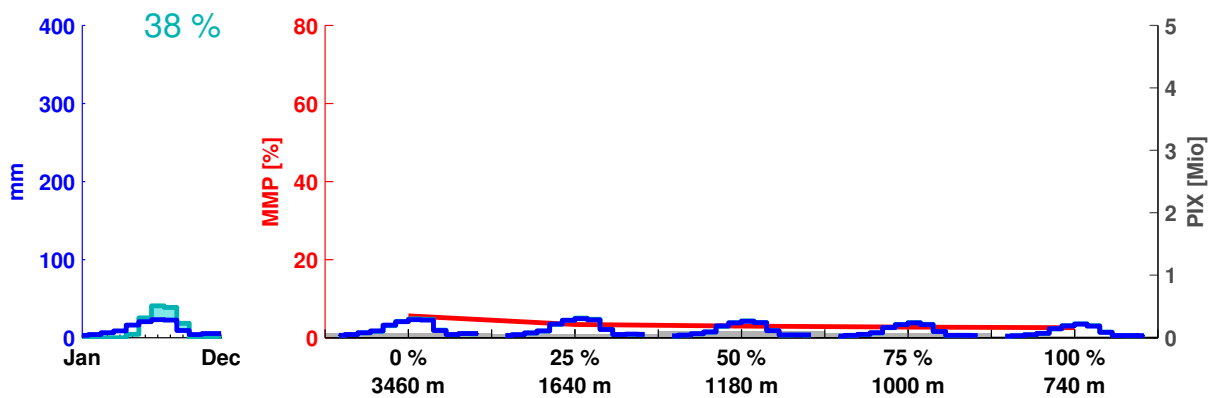
Irrawaddy

Total river basin area: 410376 km²
 Total glacier area: 25 km² (0.01 % of total river basin area)
 Mean annual precipitation: 1775 mm
 Total population: 35.26 Mio. people
 Total PIX: 0.00 Mio. people



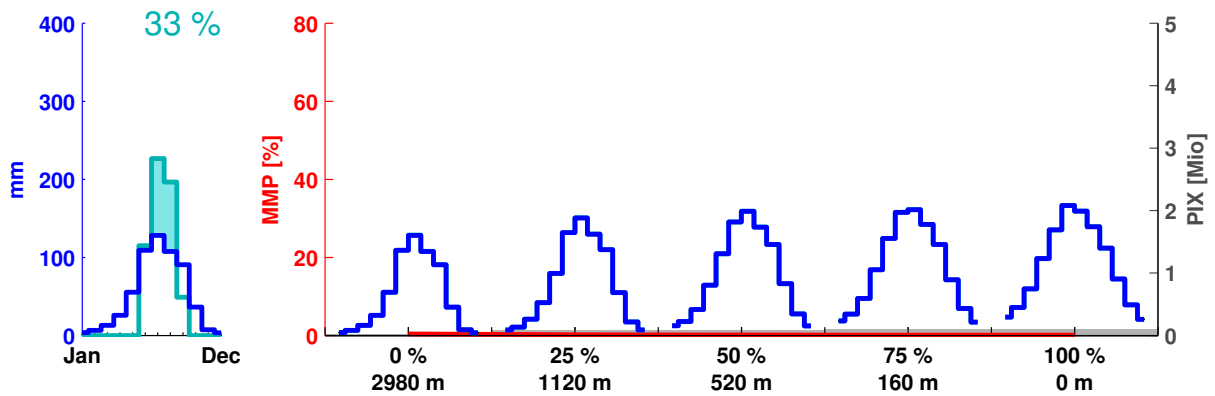
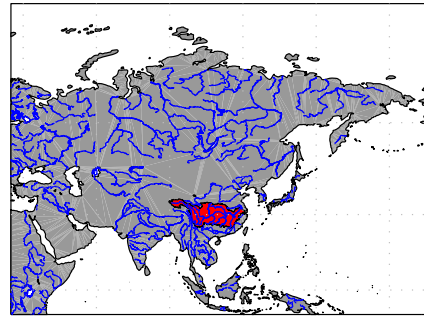
Tarim

Total river basin area: 1053180 km²
 Total glacier area: 20494 km² (1.95 % of total river basin area)
 Mean annual precipitation: 87 mm
 Total population: 9.22 Mio. people
 Total PIX: 0.30 Mio. people



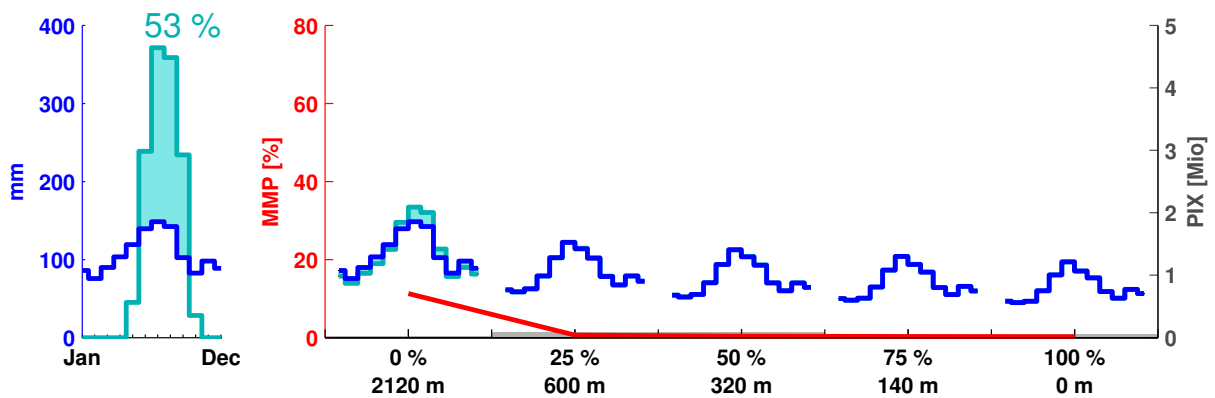
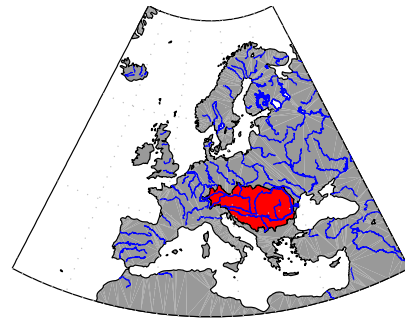
Yangtze

Total river basin area: 1746593 km²
 Total glacier area: 1895 km² (0.11 % of total river basin area)
 Mean annual precipitation: 1062 mm
 Total population: 383.04 Mio. people
 Total PIX: 0.37 Mio. people



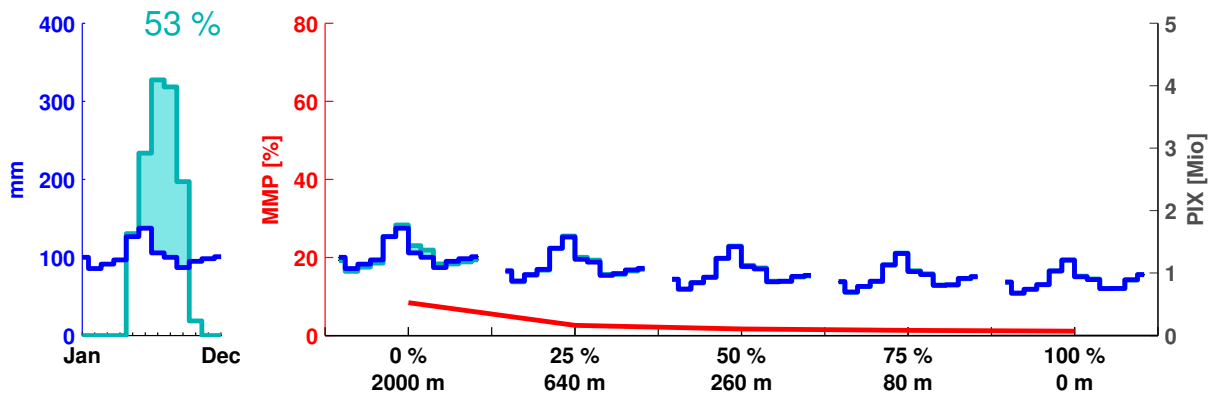
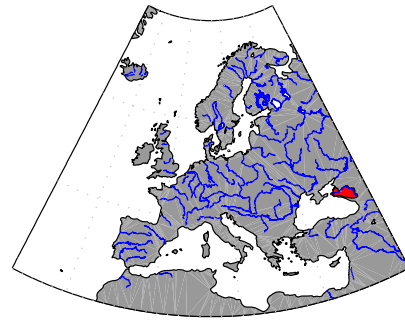
Danube

Total river basin area: 794133 km²
 Total glacier area: 617 km² (0.08 % of total river basin area)
 Mean annual precipitation: 765 mm
 Total population: 81.38 Mio. people
 Total PIX: 0.31 Mio. people



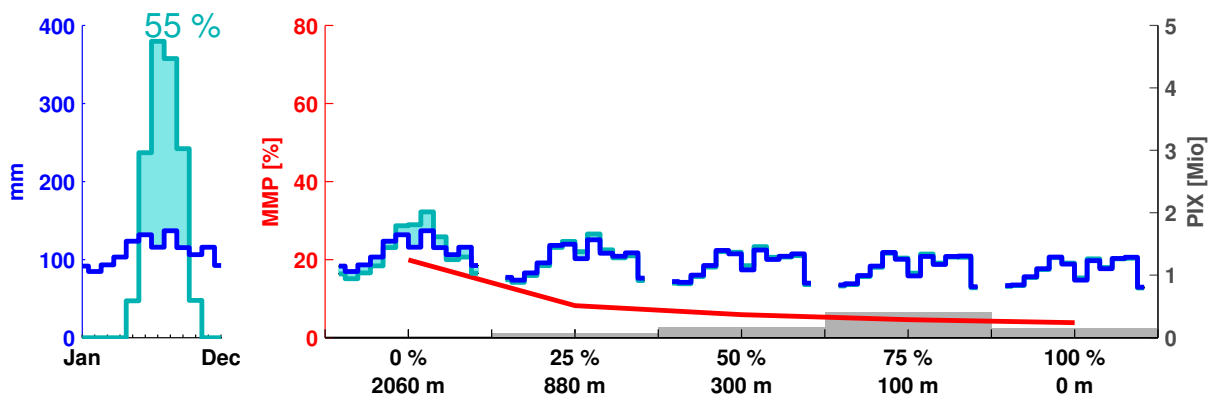
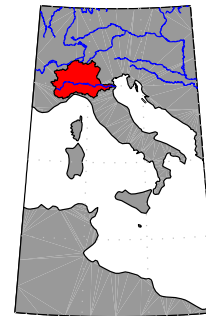
Kuban

Total river basin area: 59120 km²
 Total glacier area: 215 km² (0.36 % of total river basin area)
 Mean annual precipitation: 843 mm
 Total population: 3.45 Mio. people
 Total PIX: 0.05 Mio. people



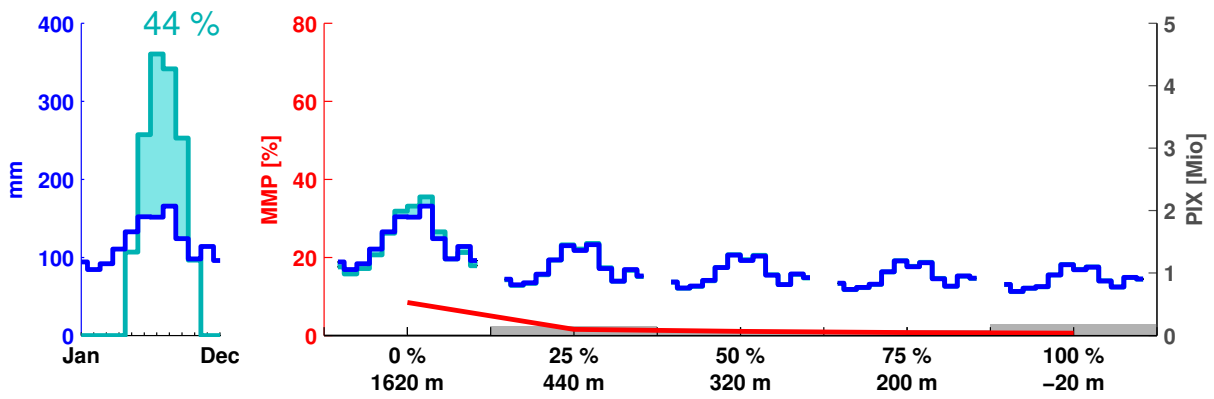
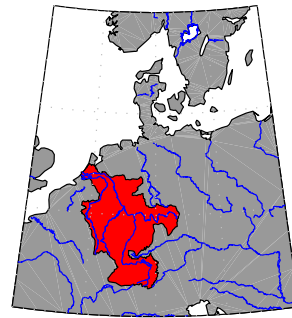
Po

Total river basin area: 73297 km²
 Total glacier area: 818 km² (1.12 % of total river basin area)
 Mean annual precipitation: 1028 mm
 Total population: 16.55 Mio. people
 Total PIX: 0.81 Mio. people



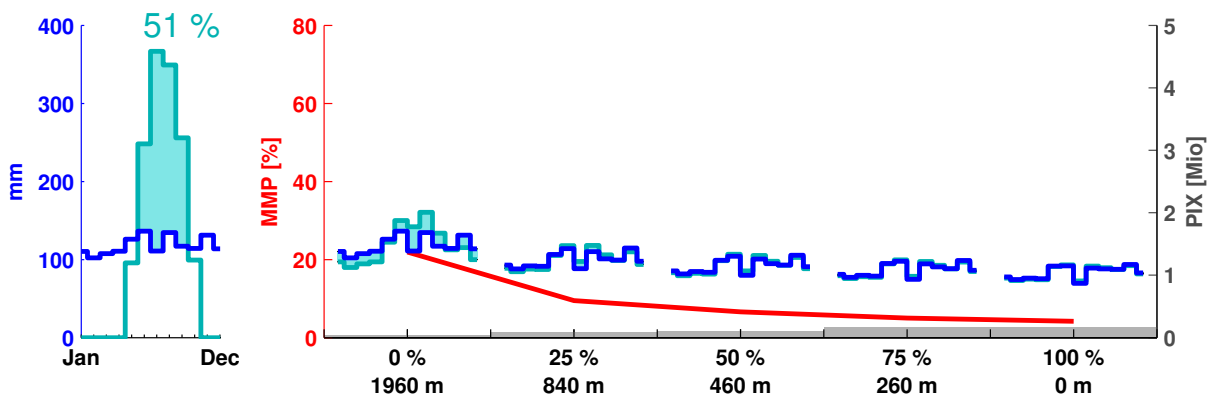
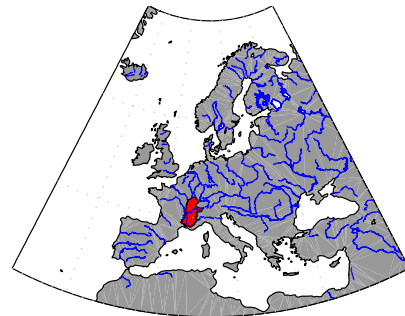
Rhine

Total river basin area: 190713 km²
 Total glacier area: 459 km² (0.24 % of total river basin area)
 Mean annual precipitation: 864 mm
 Total population: 59.07 Mio. people
 Total PIX: 0.52 Mio. people



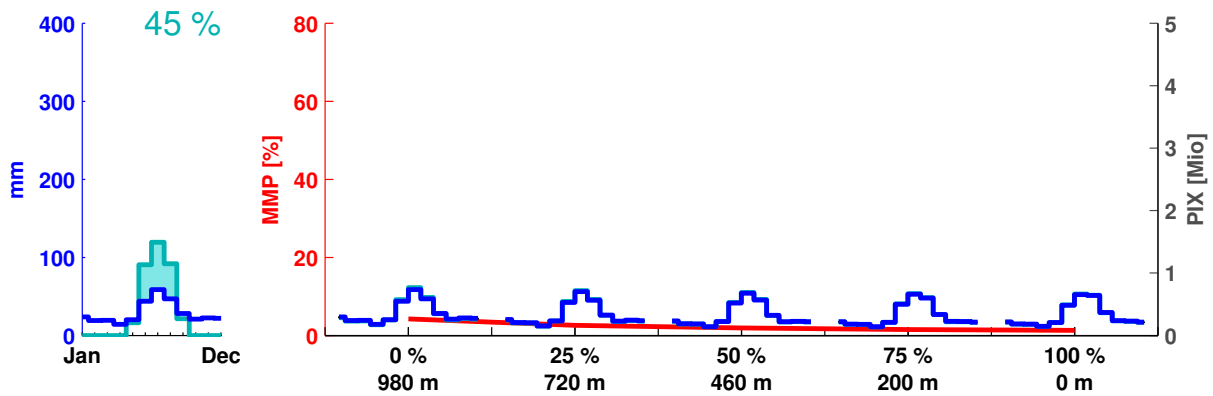
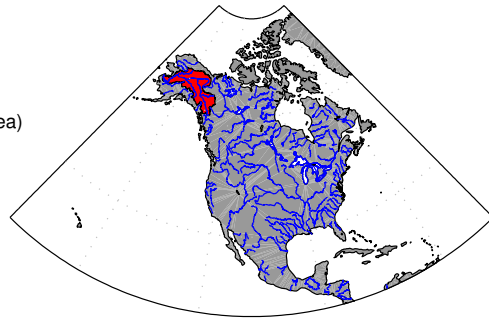
Rhone

Total river basin area: 97702 km²
 Total glacier area: 1162 km² (1.19 % of total river basin area)
 Mean annual precipitation: 998 mm
 Total population: 10.12 Mio. people
 Total PIX: 0.57 Mio. people



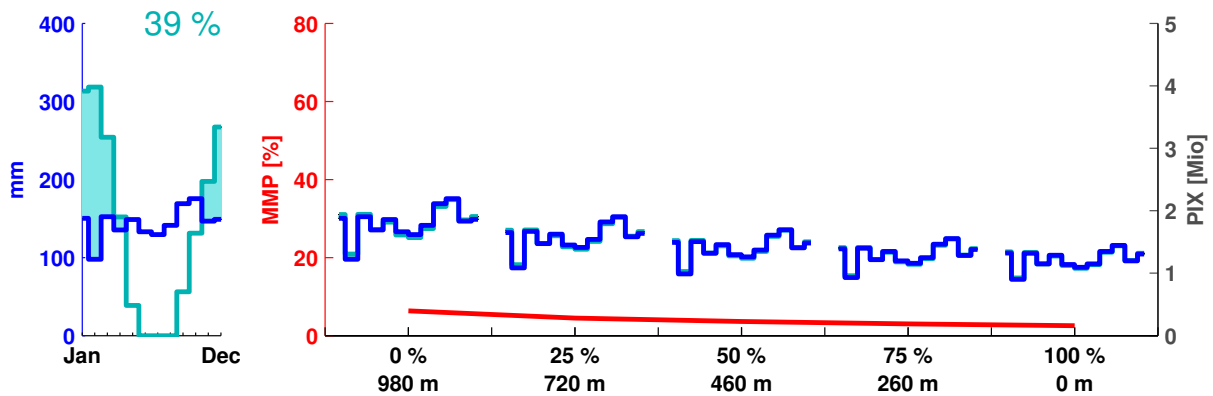
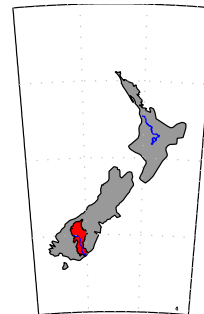
Yukon River

Total river basin area: 830257 km²
 Total glacier area: 9070 km² (1.09 % of total river basin area)
 Mean annual precipitation: 301 mm
 Total population: 0.13 Mio. people
 Total PIX: 0.00 Mio. people



Clutha River

Total river basin area: 17182 km²
 Total glacier area: 147 km² (0.86 % of total river basin area)
 Mean annual precipitation: 1172 mm
 Total population: 0.03 Mio. people
 Total PIX: 0.00 Mio. people



Rio Santa

Total river basin area: 11901 km²
 Total glacier area: 503 km² (4.23 % of total river basin area)
 Mean annual precipitation: 603 mm
 Total population: 0.57 Mio. people
 Total PIX: 0.27 Mio. people

