

**Inventory of Supplemental Information**

Supplemental Figure 1, related to Figure 2. The subcellular fractionation pattern of Psh1 does not vary over the course of the cell cycle.

Supplemental Figure 2, related to Figure 3. Psh1 does not efficiently ubiquitylate other histones or Scm3.

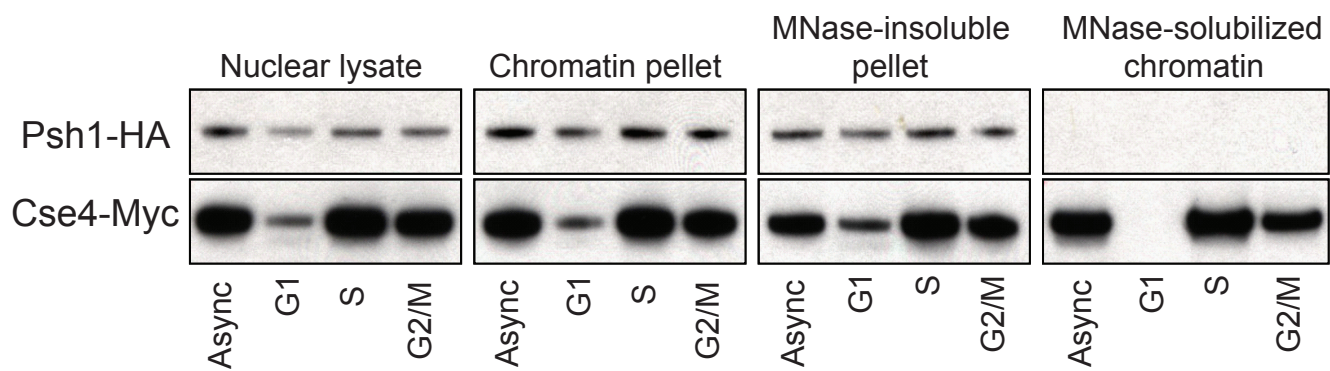
Supplemental Figure 3, related to Figure 6. Analysis of DNA content for strains shown in Figure 6.

Supplemental Figure 4, related to Figure 6. Psh1 localizes to CEN3 in Scm3<sup>off</sup> strains.

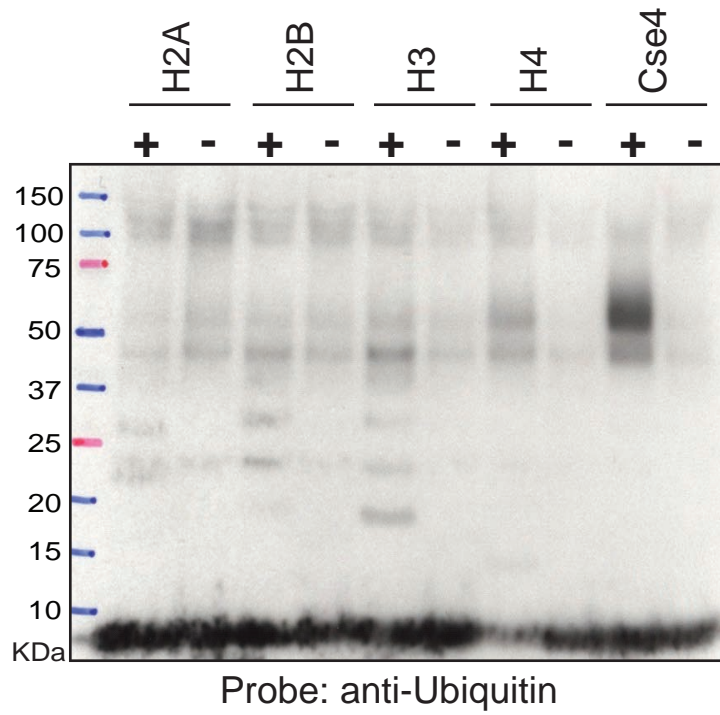
Supplemental Table 1, related to Figure 1. Strain table

Supplemental Table 2, related to Figure 2. DNA microarray data for ChIP for Psh1-HA and Cse4-Myc.

# Supplemental Figure 1.

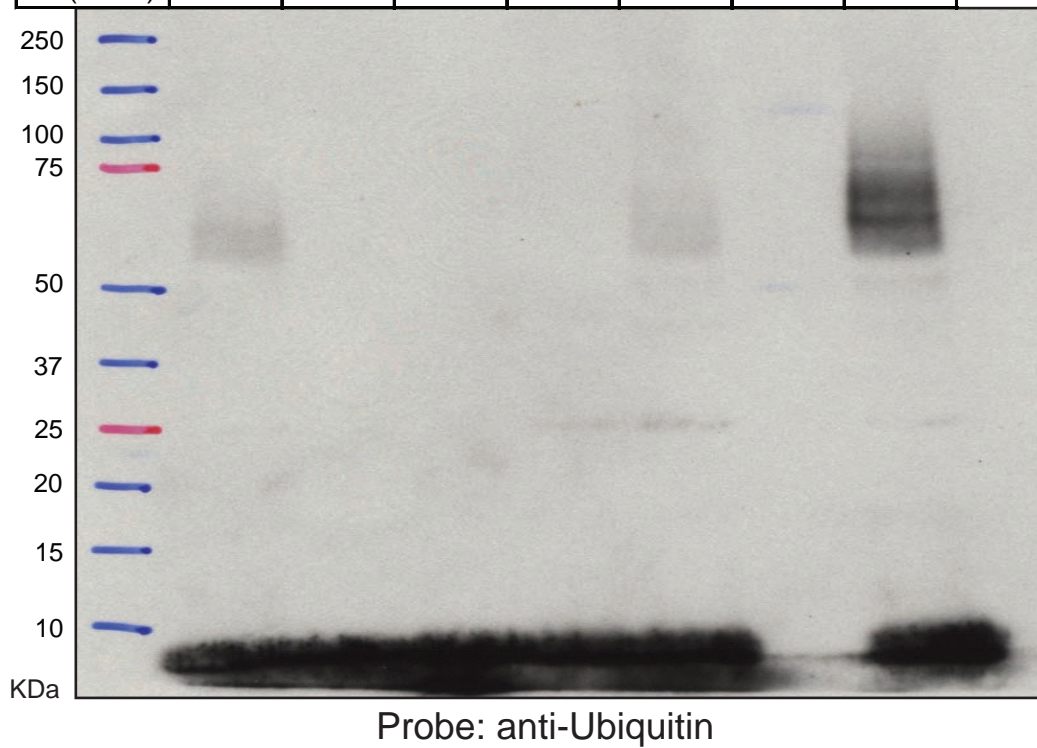


**A**

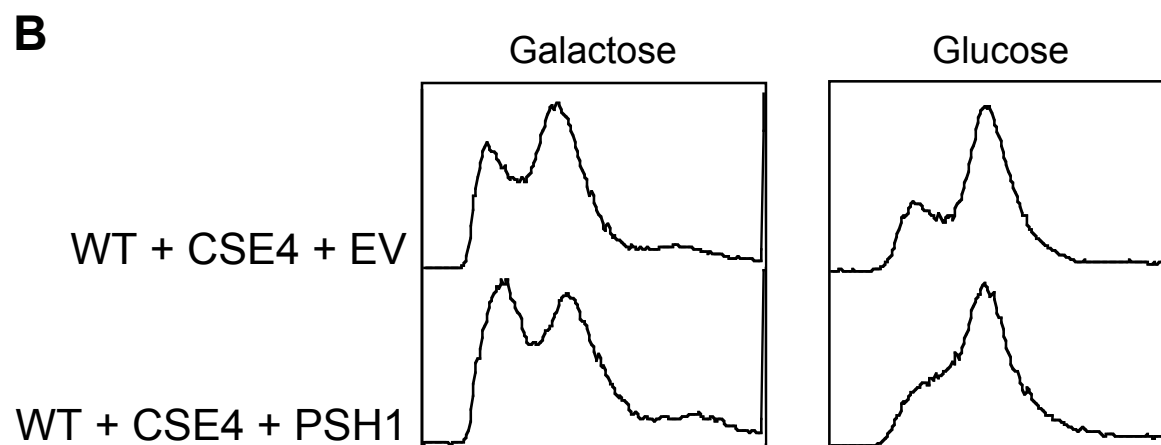
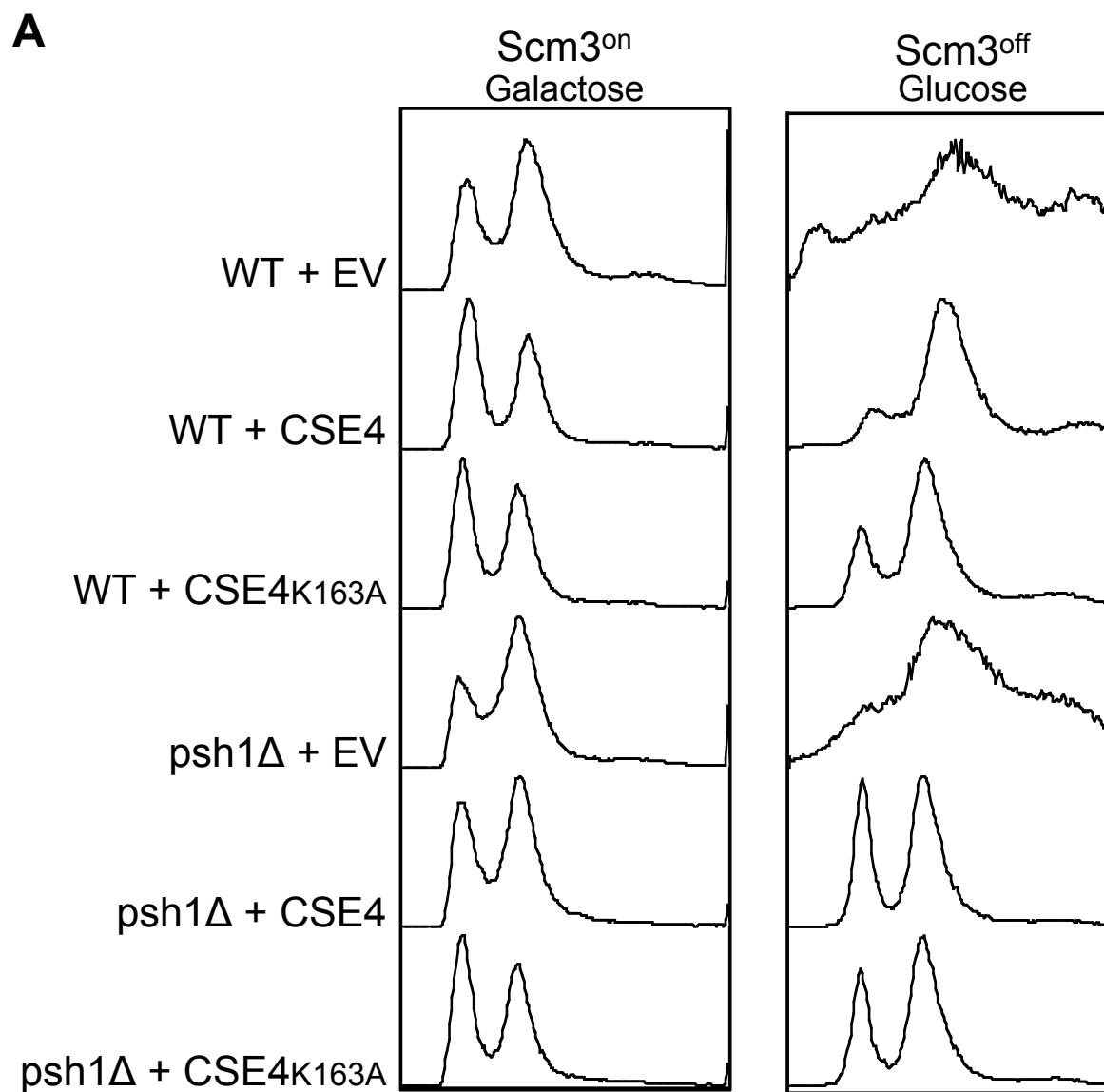


**B**

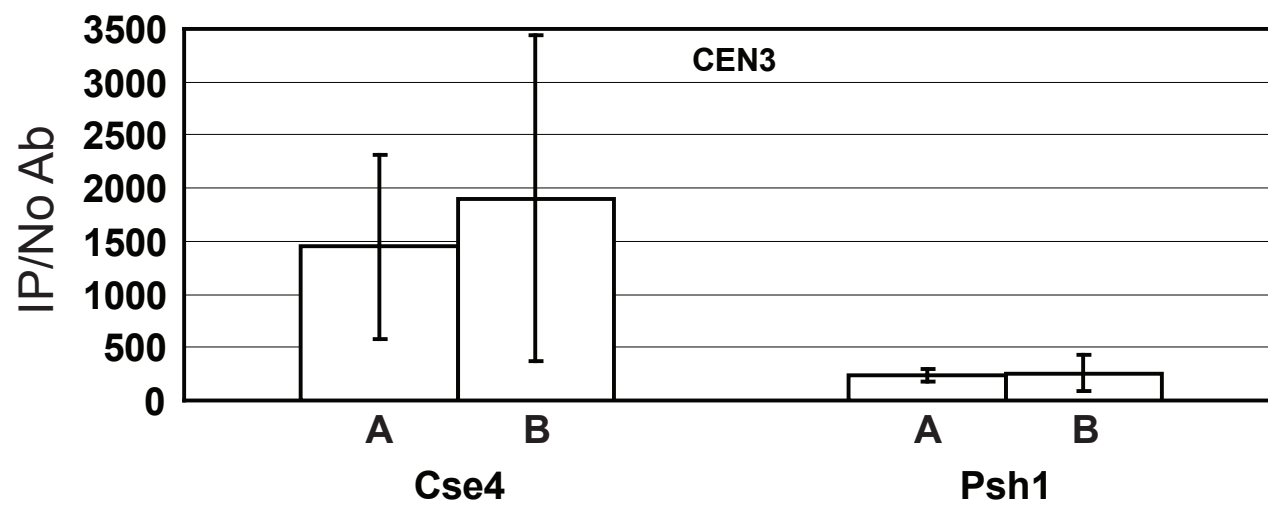
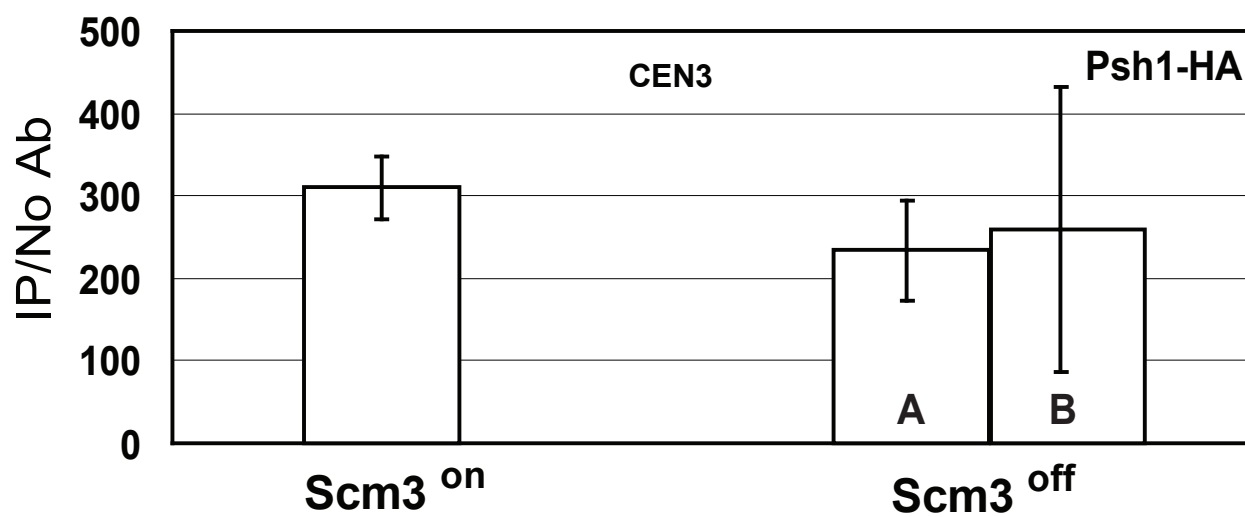
	1	2	3	4	5	6	7
Substrate	Scm3	Scm3	Scm3	Scm3	-	Scm3	Cse4
Ubiquitin	+	+	+	+	+	-	+
E1	+	-	+	+	+	+	+
E2	+	+	-	+	+	+	+
E3 (Psh1)	+	+	+	-	+	+	+



## Supplemental Figure 3.



## Supplemental Figure 4

**A****B**

**Supplemental Table 1**

[Click here to download Supplemental Movies and Spreadsheets: Table 1-Strains.xls](#)

**Supplemental Table 2**

[Click here to download Supplemental Movies and Spreadsheets: Table 2-Microarray data.txt](#)