

Muscle stretch

Figure 6.

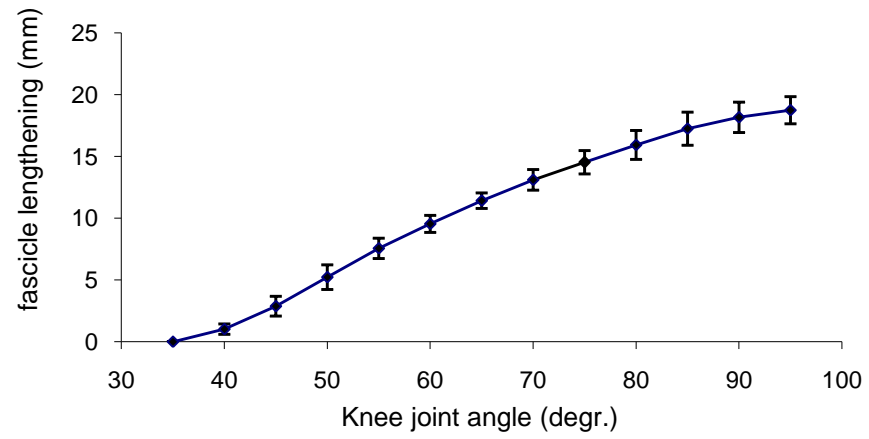


Figure 6. M. v. lateralis fascicle lengthening during passive movement of the leg. Values are means \pm SEM (n=3).

EMG

Figure 7.

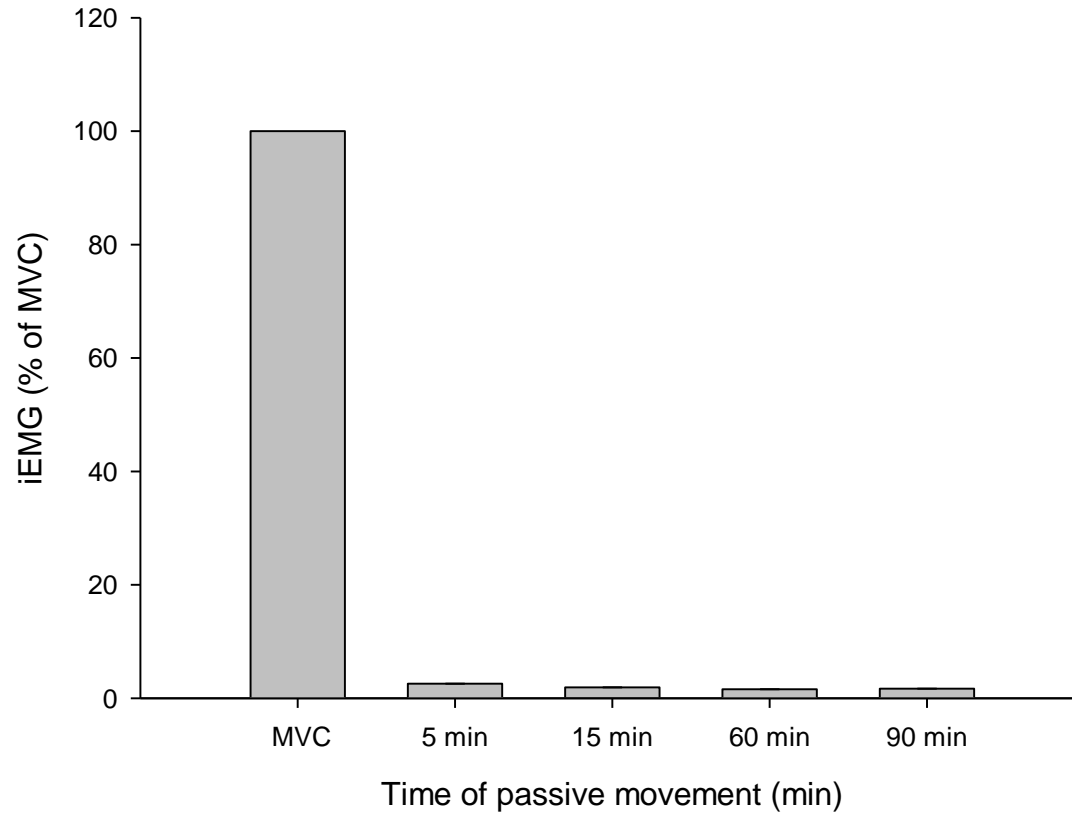
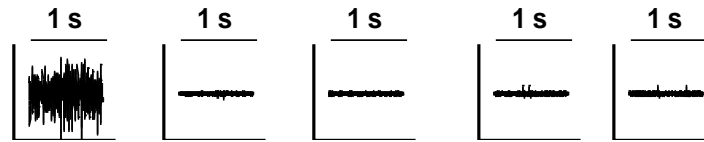


Figure 7. EMG activity in m. v. lateralis during passive movement of the leg and during maximal voluntary contraction. Integrated EMG (iEMG) determined during maximal voluntary contraction (MVC) and at 5, 15, 60, and 90 min of passive movement of the leg. Top graphs show the raw signal corresponding to the time points. Values are means \pm SEM (n=3).