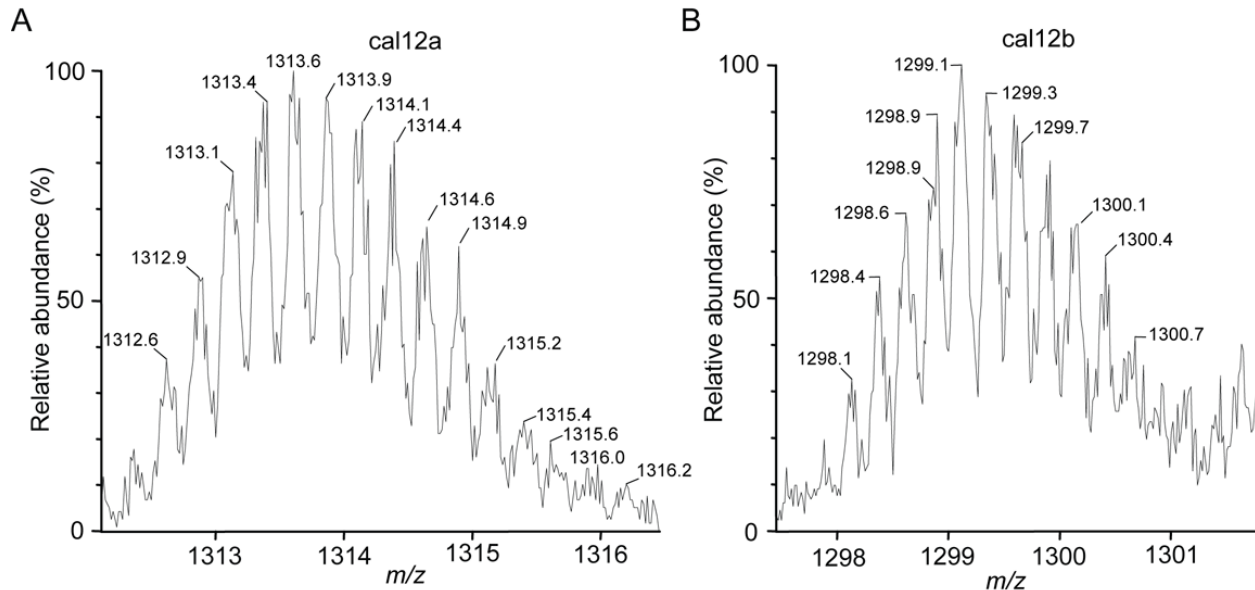


Diversity in a Novel Family of Peptide Toxins from an Unusual Cone Snail, *Conus californicus*

W. F. Gilly, T.A. Richmond, T. Duda, C. Elliger, Z. Lebaric, J. Schulz,
J. P. Bingham and J. V. Sweedler

Supplementary Material



S1. Collected isotopic distributions of native peptides cal12a (panel A) and cal12b (panel B). Note that the actual data are displayed with $+4$ ions, and the calculated spectra shows $+1$ ions. Collected spectra exhibit isotopic profiles consistent with incorporation of multiple bromine atoms.