

Supplemental Figure 2

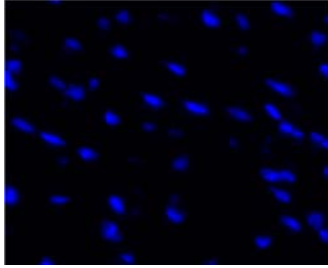


Fig S2. Non-immune control for expression of PI(3,5)P2 in adult mouse heart ventricular cross-sections. The section was incubated with antibody diluent, DAPI stain, and supplemented with a non-immune immunoglobulin of the same isotype as the primary antibody. Section was set at the same fluorescent values as those in Fig.1 for any pixel and below the saturation limit of the camera (4096), indicating that the images have been normalized and that no pixels were saturated. Images were captured with a 40x objective.