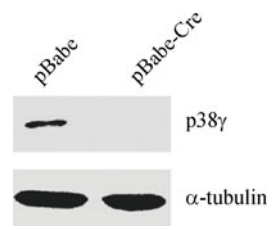


Supplemental Figure 1. Schematic presentation of the strategy for the generation of isogenic MEF cell lines that are either wild type or null for each p38 isoform. MEF cells were isolated from mice harboring a floxed allele of p38α, p38β, p38δ or p38γ. These cells were then transduced with a Cre-encoding retrovirus (pBabe-Cre) or a vector control retrovirus (pBabe) to generate p38- null (p38^{-/-}) or wild type (p38^{+/+}) MEF cell lines, respectively. Locations of the loxP sites (black arrows) and exons between the 2 loxP sites (numbered boxes) are indicated for the genomic locus of each p38 isoform.



Supplemental Figure 2. Western blot analysis of MEF cells isolated from a mouse harboring a floxed allele of p38 γ , after transduction of a control (pBabe) or Cre-encoding (pBabe-Cre) retrovirus, showing loss of p38 γ protein expression in cells transduced with Cre.