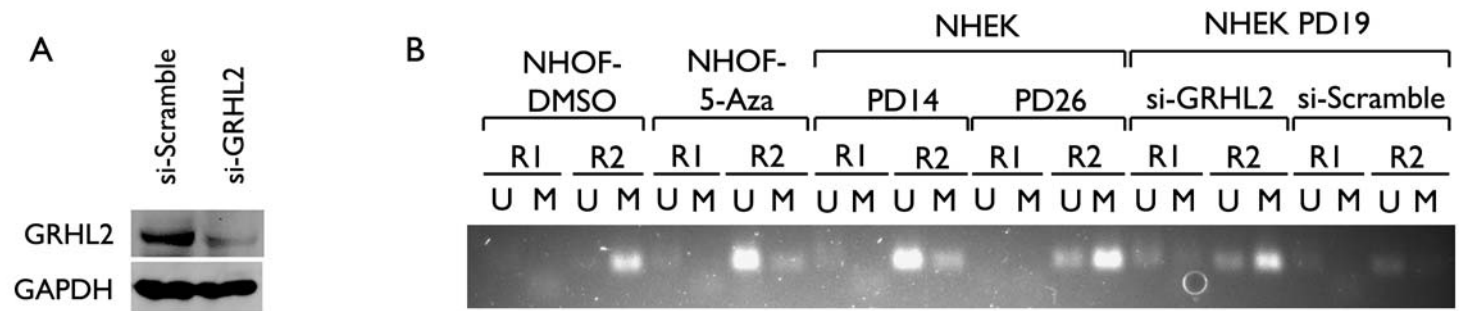


Supplement Figure S1



Supplemental Fig. S1. Knockdown of endogenous GRHL2 leads to hypermethylation of the hTERT promoter. (A) Western blotting was performed with NHEK (PD 19) transfected with GRHL2 siRNA (si-GRHL2; Santa Cruz) or control, scrambled siRNA (si-Scramble) after three days post-transfection. GAPDH was used as a loading control. (B) MSP was performed with the following cells: NHOV treated with 1% DMSO or 1  $\mu$ M 5-aza-2'-deoxycytidine (5-aza-CdR; Sigma); NHEK at PDs 14 or 26; NHEK at PD 19 transfected with GRHL2 siRNA or scrambled siRNA. Cells were harvested after three days post-transfection. R1 and R2 indicate the two different regions of the hTERT promoter amplified by MSP (see Materials and Methods). U and M indicate amplification with the primer sets recognizing the hypo- and hypermethylated DNA, respectively