

Supplement Material

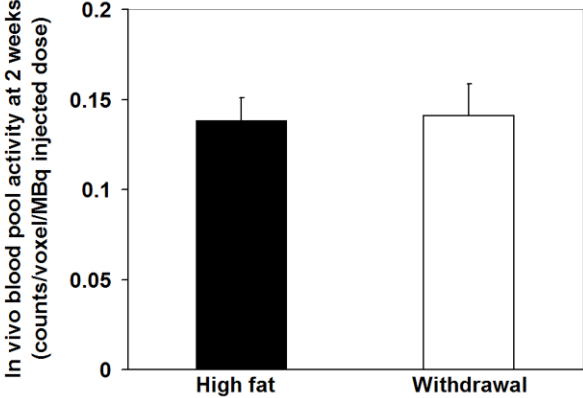
Supplemental Figure Legends

Supplemental Figure I: In vivo quantification of blood pool activity measured in regions of interest drawn over the heart on RP805 microSPECT/CT images obtained at 2 weeks after surgery.

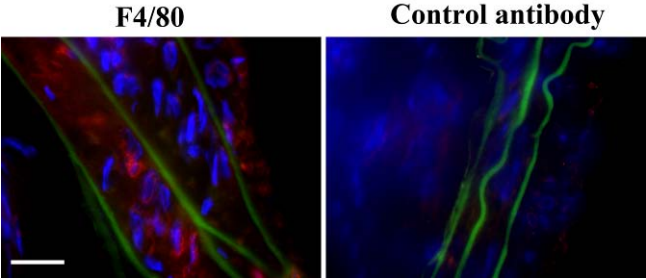
Supplemental Figure II: Examples of F4/80 and control antibody immunofluorescent staining (in red) of remodeling carotid arteries. Elastic membrane autofluorescence is in green and nuclei are stained with DAPI in blue. Scale bar: 10 μm .

Supplemental Figure III: A, Representative examples of MMP immunofluorescent staining (in red) of sham-operated right, and injured left common carotid arteries at 4 weeks after surgery in the withdrawal group. Elastic membrane autofluorescence is in green and nuclei are stained with DAPI in blue. The insets represent staining with control antibodies. Scale bar: 50 μm . **B,** Examples of in situ gelatinase activity (in green) of sham-operated right, and injured left common carotid arteries at 4 weeks after surgery in the withdrawal group. Scale bar: 100 μm .

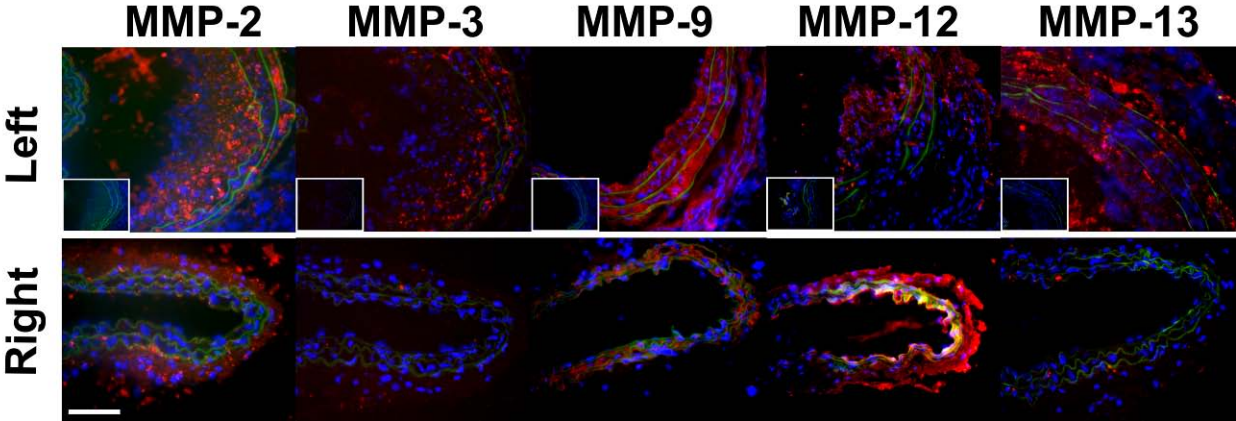
Supplemental Figure I



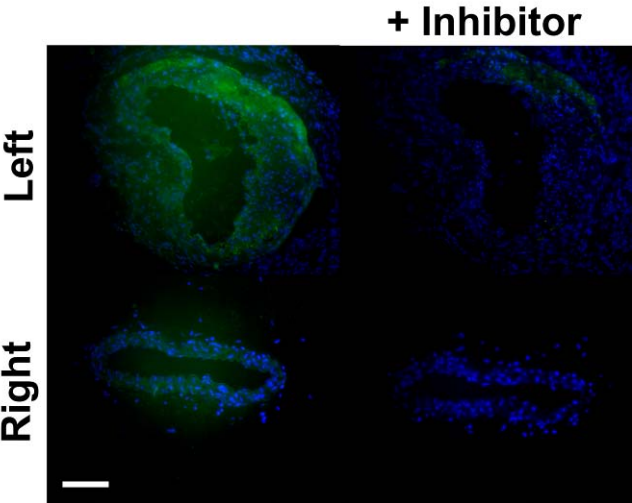
Supplemental Figure II



Supplemental Figure IIIA



Supplemental Figure IIIB



Supplemental Table

Correlation between the macrophage markers, CD68 and EMR1, and MMP mRNA expression in carotid arteries at 4 weeks after surgery

MMPs	CD68		EMR1	
	R	P	R	P
MMP-2	0.71	< 0.001	0.90	< 0.001
MMP-3	0.76	< 0.001	0.69	< 0.001
MMP-9	-0.14	NS	-0.16	NS
MMP-12	0.66	< 0.001	0.74	< 0.001
MMP-13	0.74	< 0.001	0.55	< 0.01

MMP: matrix metalloproteinase; NS: not significant