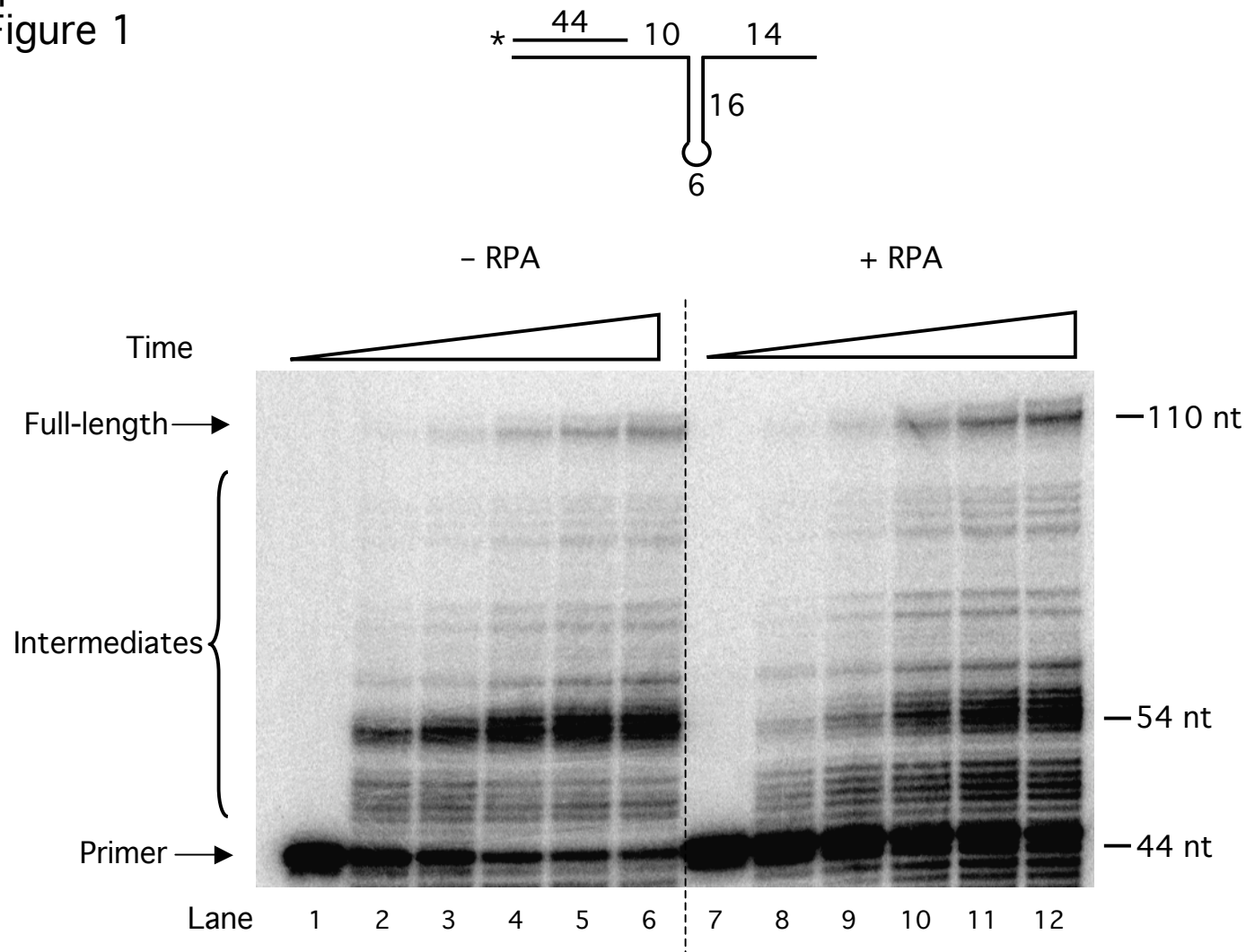


Supplemental  
Figure 1



**Supplemental Figure 1. Template secondary structure slows synthesis by pol  $\delta$  on a shorter fold-back.** Synthesis by pol  $\delta$  (23 fmol) was assayed on a 16 nt template fold-back substrate ( $U_2:T_4$ ) in the presence of PCNA (25 fmol) and RFC (25 fmol) and in the absence or presence of RPA (200 fmol) for increasing amounts of time (0, 0.5, 1, 2.5, 5, and 10 minutes) as indicated in the figure and as described under Experimental Procedures. Substrate depictions and figure labels are as in Fig. 1. Numbers along the sides of the gel denote segment lengths in nucleotides.