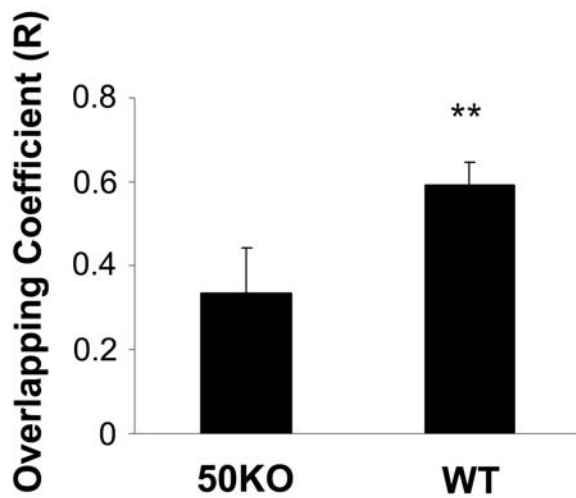
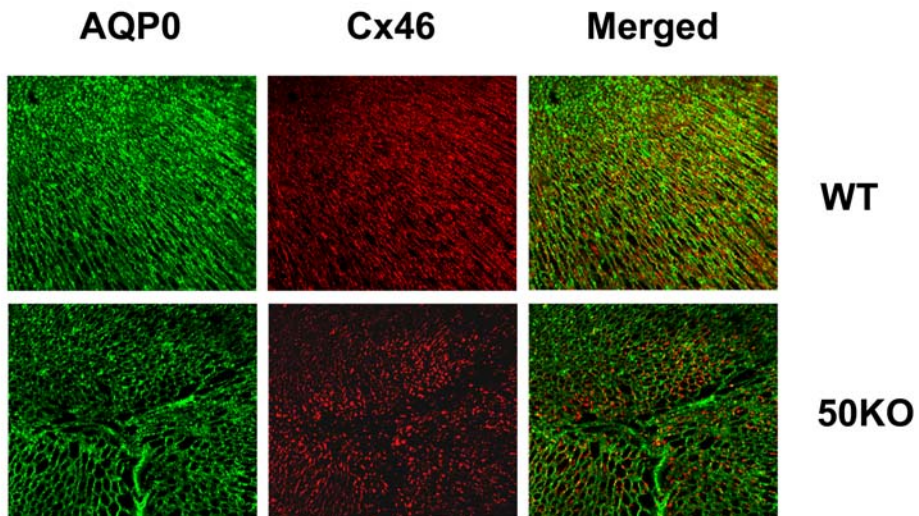


Fig. S1



**Fig. S1.** Cx46 does not localize with AQP0 in the lens of Cx50 knockout mice. The lenses were dissected out from 1-month old WT and Cx50 knockout mice. The cryosections of the embedded mouse lenses were immunolabeled with antibody against AQP0 (Alpha-Diagnostic) (green) or Cx46 (Santa Cruz) (red). The primary antibodies were detected by fluorescein-conjugated anti-rabbit IgG for anti-AQP0 antibody and rhodamine-conjugated anti-goat IgG for anti-Cx46 antibody. The immunostaining was visualized by confocal fluorescence microscopy. The corresponding merged images (Merged) are shown on the right. Colocalization coefficients between Cx46 and AQP0 were measured on the confocal images by using NIH ImageJ software with the Intensity Correlation Analysis plugin. The data are presented as mean  $\pm$  s.e.m. ( $n=5$ ). (\*\*,  $P < 0.01$ , in comparison with Cx50 knockout).