

Supplementary Table 1

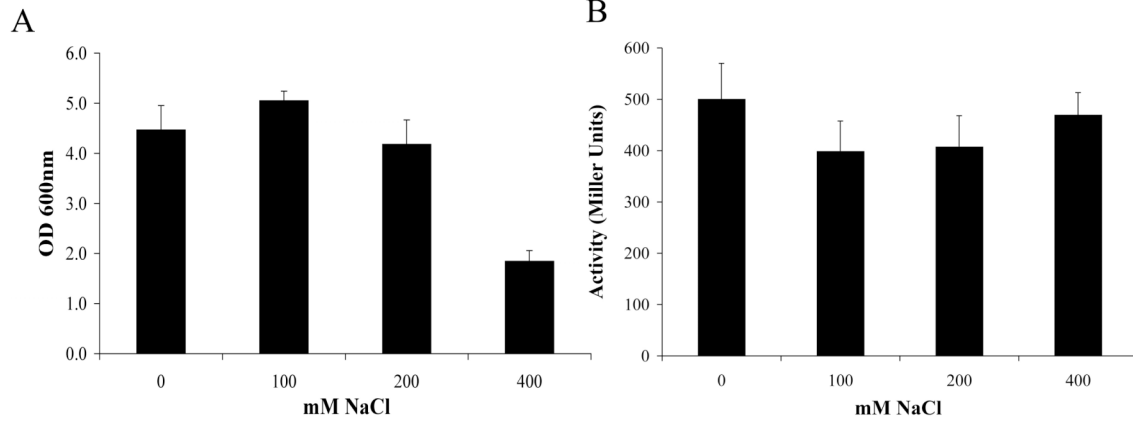
Supplemental Table 1: ICP-MS analysis of yeast grown in low metal SC media¹

Element	WT (mM)	<i>pho80</i>Δ (mM)
P	220.1 ± 11.3	328.5 ± 2.1
Ca	4.3 ± 0.3	8.2 ± 0.5
Fe	0.123 ± 0.01	0.146 ± 0.01

Analysis of two independent cultures ± S.D.

¹ Prepared with a specialized yeast nitrogen base without Ca, Cu, Fe, Mg, Mn and Zn (Bio101, Inc; Vista CA) supplemented with 10 μM MgSO₄ and 30 μM CaCl₂.

Supplementary Figure 1



Supplementary Figure 1: LacZ reporter assays for iron transport transcription with NaCl stress

Wild type (BY4741) cells transformed with the *AFT-CYC* reporter for the Aft1p response were grown in selecting minimal media overnight for 18 hours supplemented with the indicated concentrations of NaCl. (A) Total cell growth was monitored as a function of absorbance at 600 nm. (B) LacZ measurements were conducted as described in *Materials and Methods*. Error bars indicate S.D.