

1 Biophysical Journal, Volume 100

2 **Supporting Material**

3 **Detection of membrane protein 2-D crystals in living cells**

4

5 Ellen J Gualtieri, Fei Guo, David J Kissick, Joyce Jose,

6 Richard J Kuhn, Wen Jiang, and Garth J Simpson

7

8

**Supporting information:**

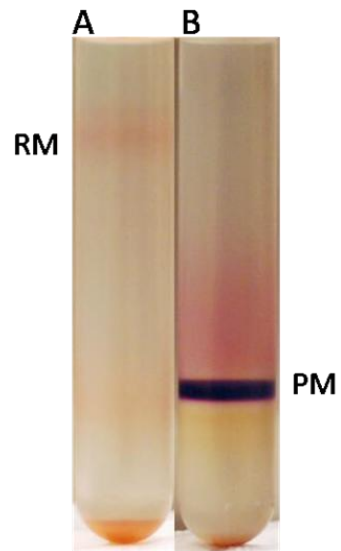


Figure S1. Red membrane band (A) and Purple membrane band (B) after sucrose gradient sedimentation. Red membrane fraction was purified from cells grown with 3mg/ml novobiocine to inhibit formation of purple membrane.

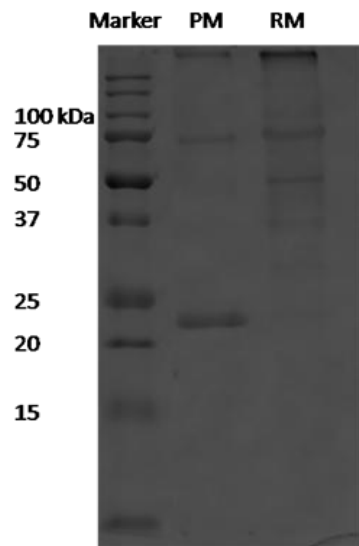


Figure S2. SDS-PAGE for the purified purple and red membrane proteins (PM and RM, respectively).

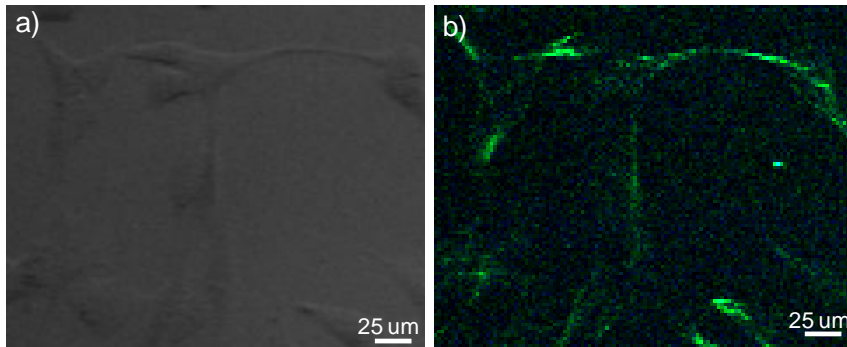


Figure S3. Brightfield (a) and forward SHG (b) of wild type BHK-15 cells.