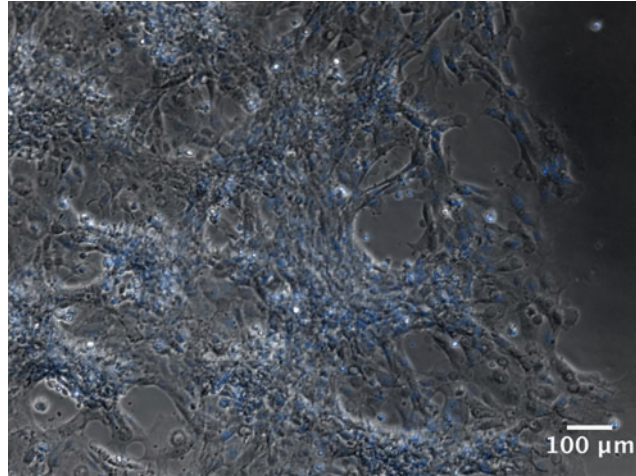


Supplementary Data



SUPPLEMENTARY FIG. S1. Formation of multicellular aggregate structures along the wound edge of RLE-6TN cells cultured on FnIII10. A wound healing assay was performed with RLE-6TN cells plated on FnIII10. Cells were allowed to form a monolayer around wound field inserts, which were removed 5 h post-seeding. Cells were allowed to migrate and close wound field for 15 h and then fixed, and nuclei stained. Cells were imaged at 10 \times magnification to the immediate left of the wound field. Image is representative.