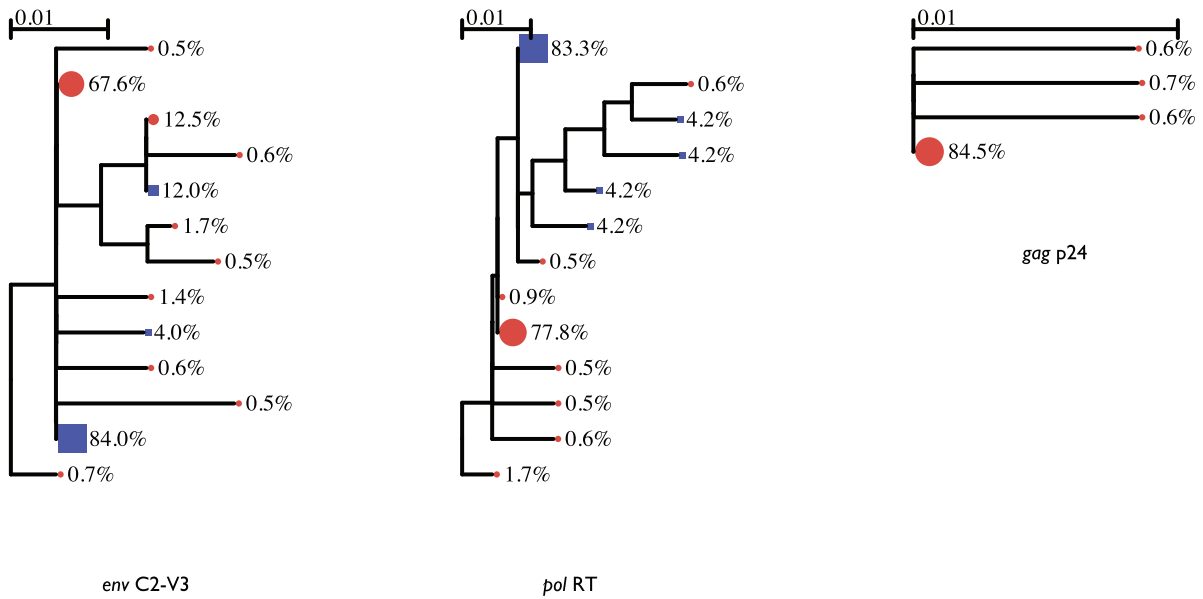
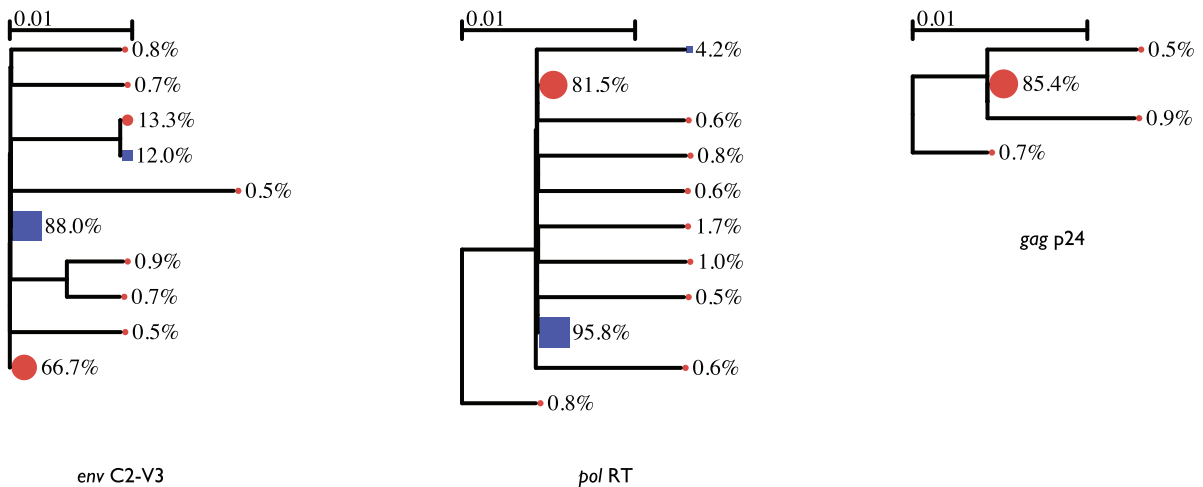


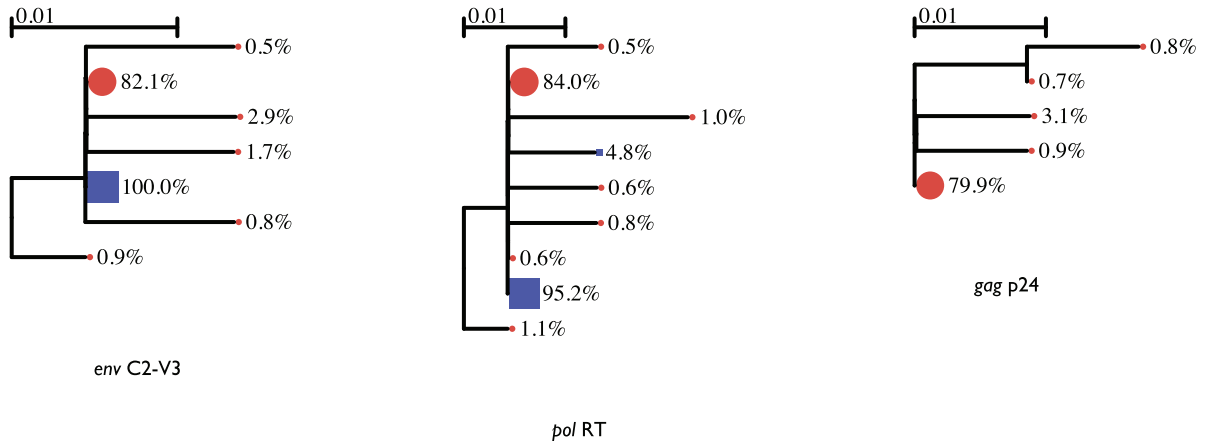
Supplementary Data



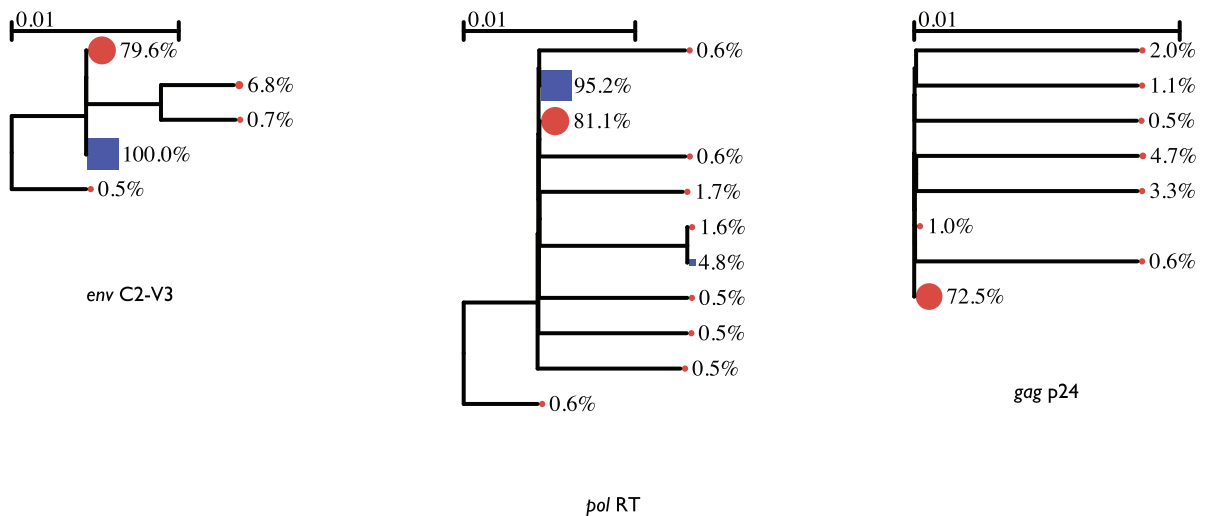
SUPPLEMENTARY FIG. 1. Sample A, UDS duplicate 1. First year of infection. No evidence of DI. UDS are represented as red circles and SGS as blue squares. Variant abundances per node and branches with >90% bootstrap support are labeled.



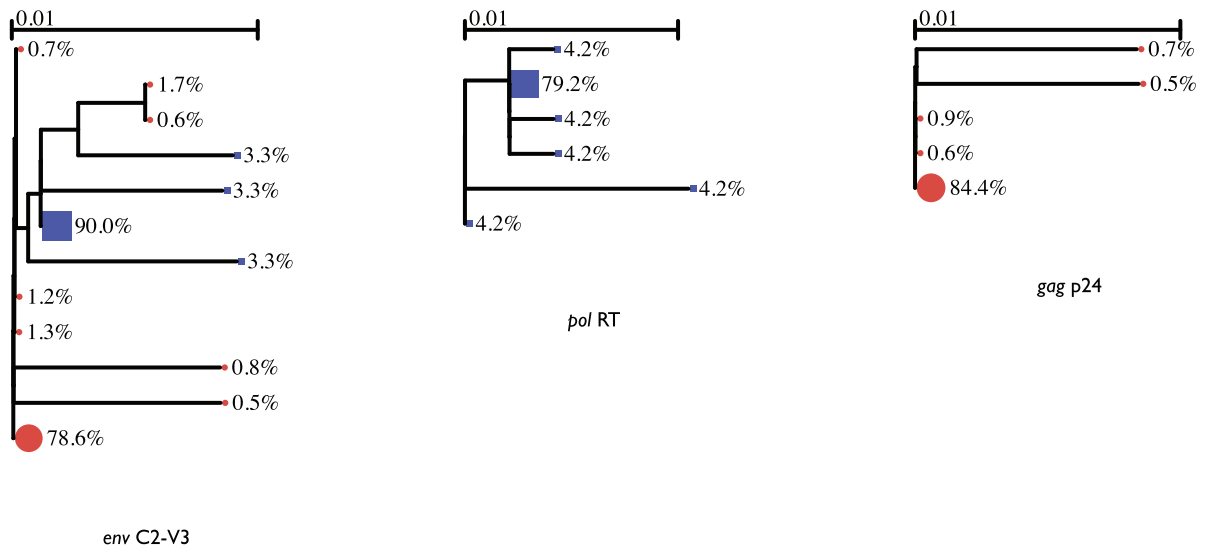
SUPPLEMENTARY FIG. 2. Sample A, UDS duplicate 2. First year of infection. No evidence of DI. UDS are represented as red circles and SGS as blue squares. Variant abundances per node and branches with >90% bootstrap support are labeled.



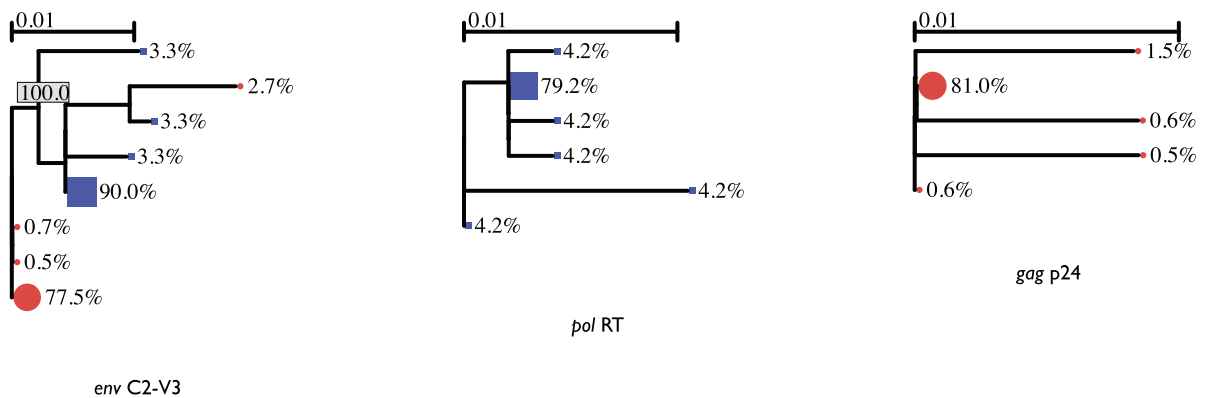
SUPPLEMENTARY FIG. 3. Sample B, UDS duplicate 1. First year of infection. No evidence of DI. UDS are represented as *red circles* and SGS as *blue squares*. Variant abundances per node and branches with >90% bootstrap support are labeled.



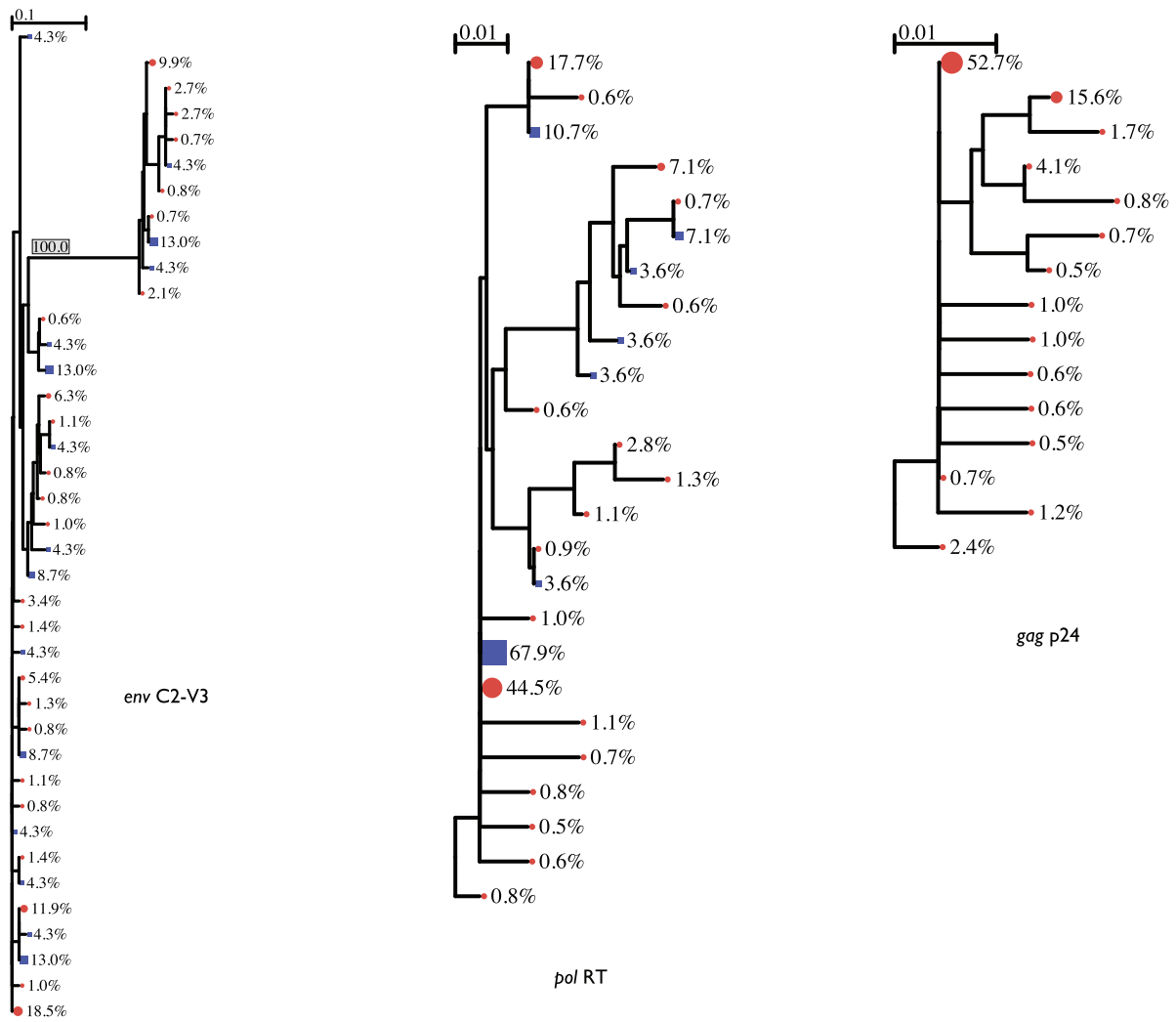
SUPPLEMENTARY FIG. 4. Sample B, UDS duplicate 2. First year of infection. No evidence of DI. UDS are represented as *red circles* and SGS as *blue squares*. Variant abundances per node and branches with >90% bootstrap support are labeled.



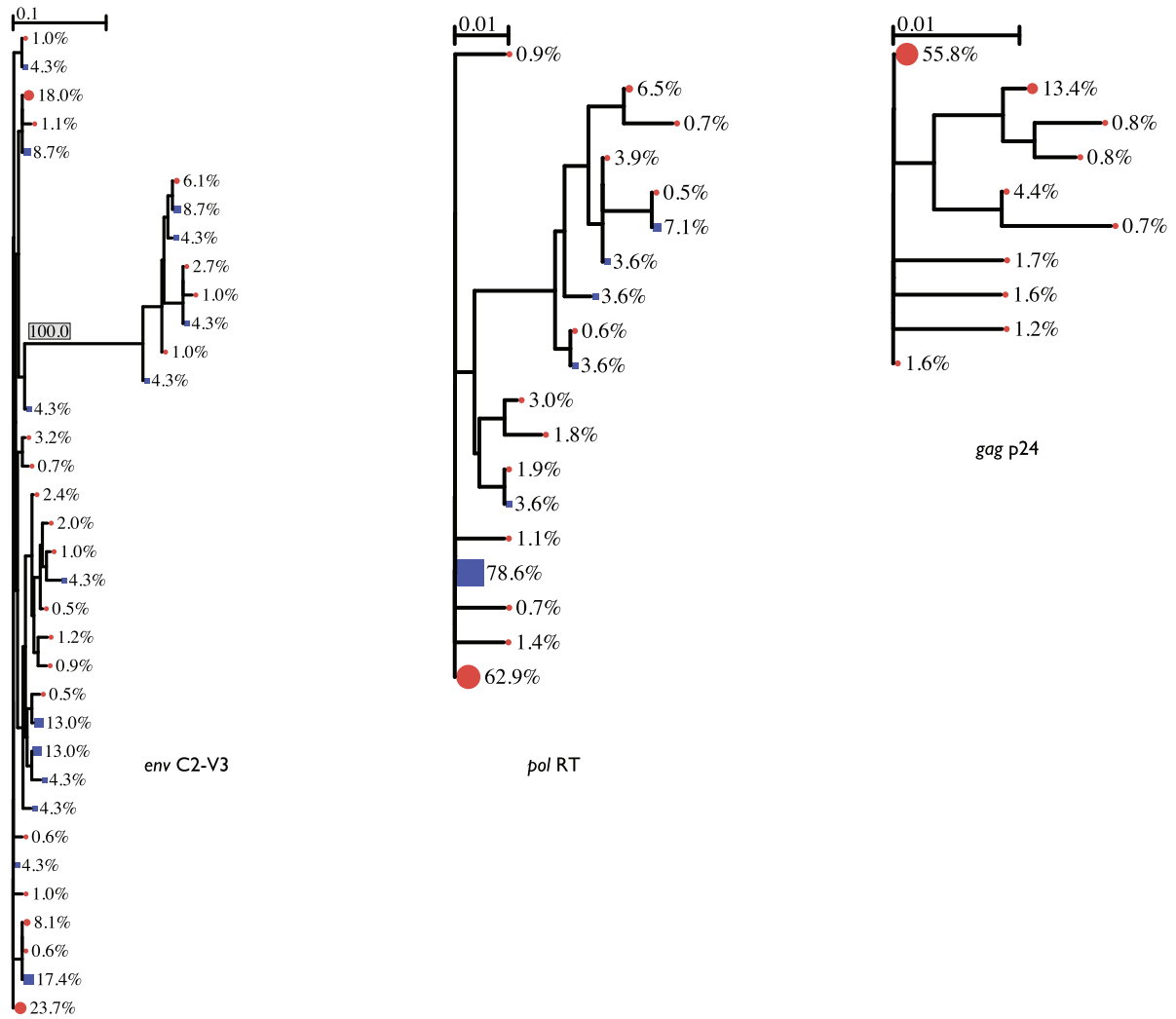
SUPPLEMENTARY FIG. 5. Sample C, UDS duplicate 1. First year of infection. No evidence of DI. Insufficient UDS RT reads for analysis. UDS are represented as red circles and SGS as blue squares. Variant abundances per node and branches with >90% bootstrap support are labeled.



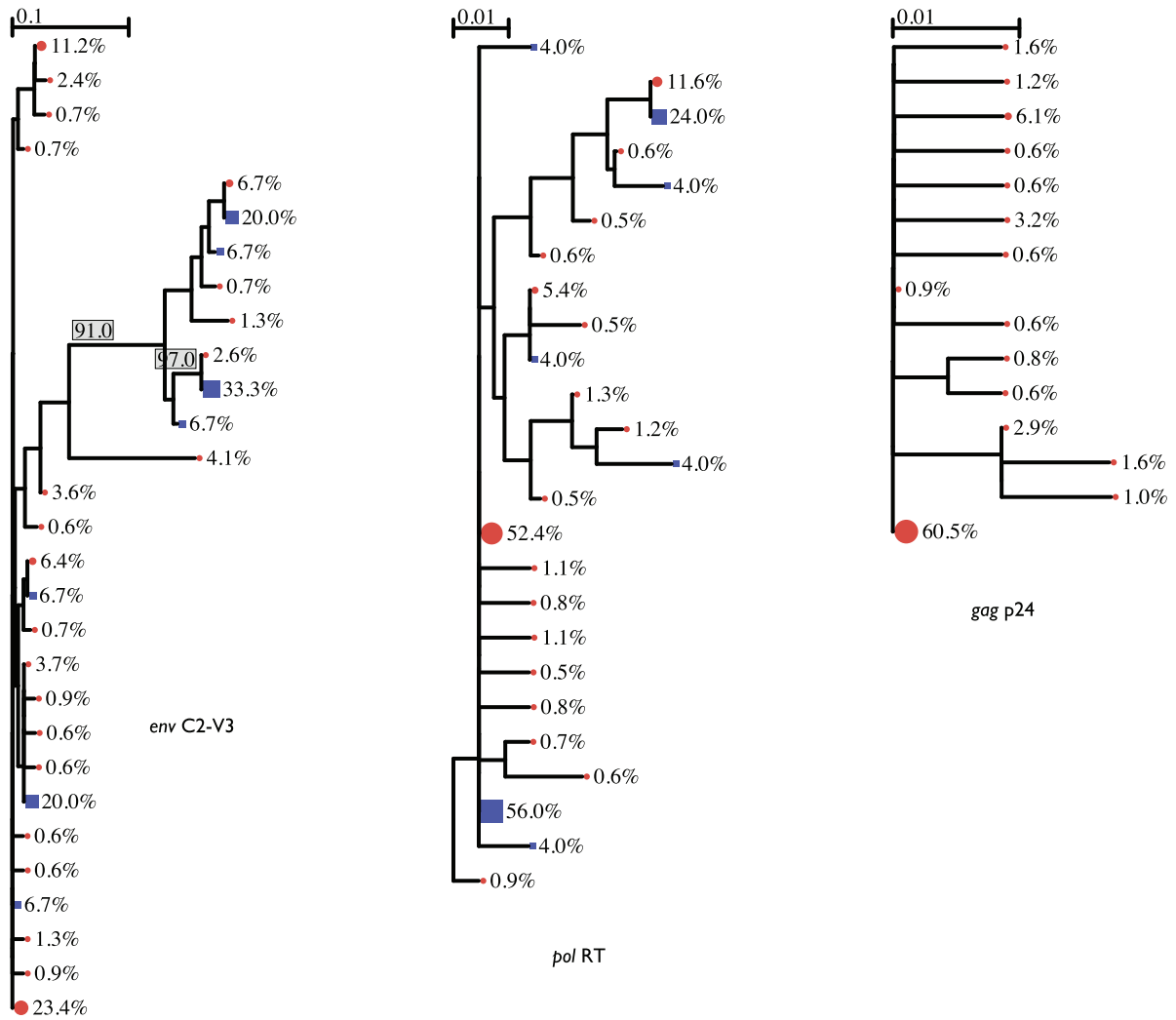
SUPPLEMENTARY FIG. 6. Sample C, UDS duplicate 2. First year of infection. No evidence of DI. Insufficient UDS RT reads for analysis. UDS are represented as red circles and SGS as blue squares. Variant abundances per node and branches with >90% bootstrap support are labeled.



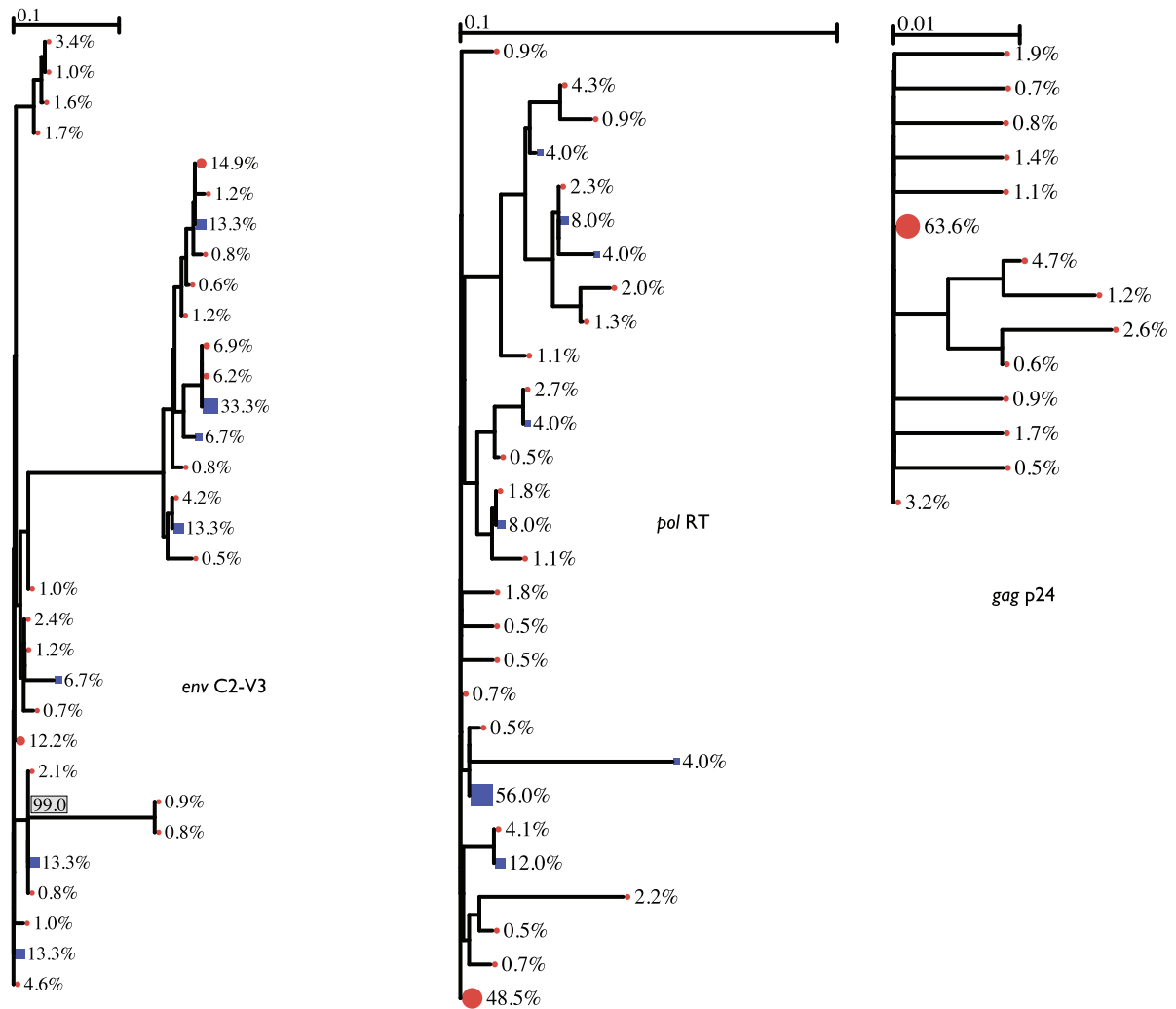
SUPPLEMENTARY FIG. 7. Sample D1, UDS duplicate 1. Third year of infection. DI in *env* and *pol*. UDS are represented as red circles and SGS as blue squares. Variant abundances per node and branches with >90% bootstrap support are labeled.



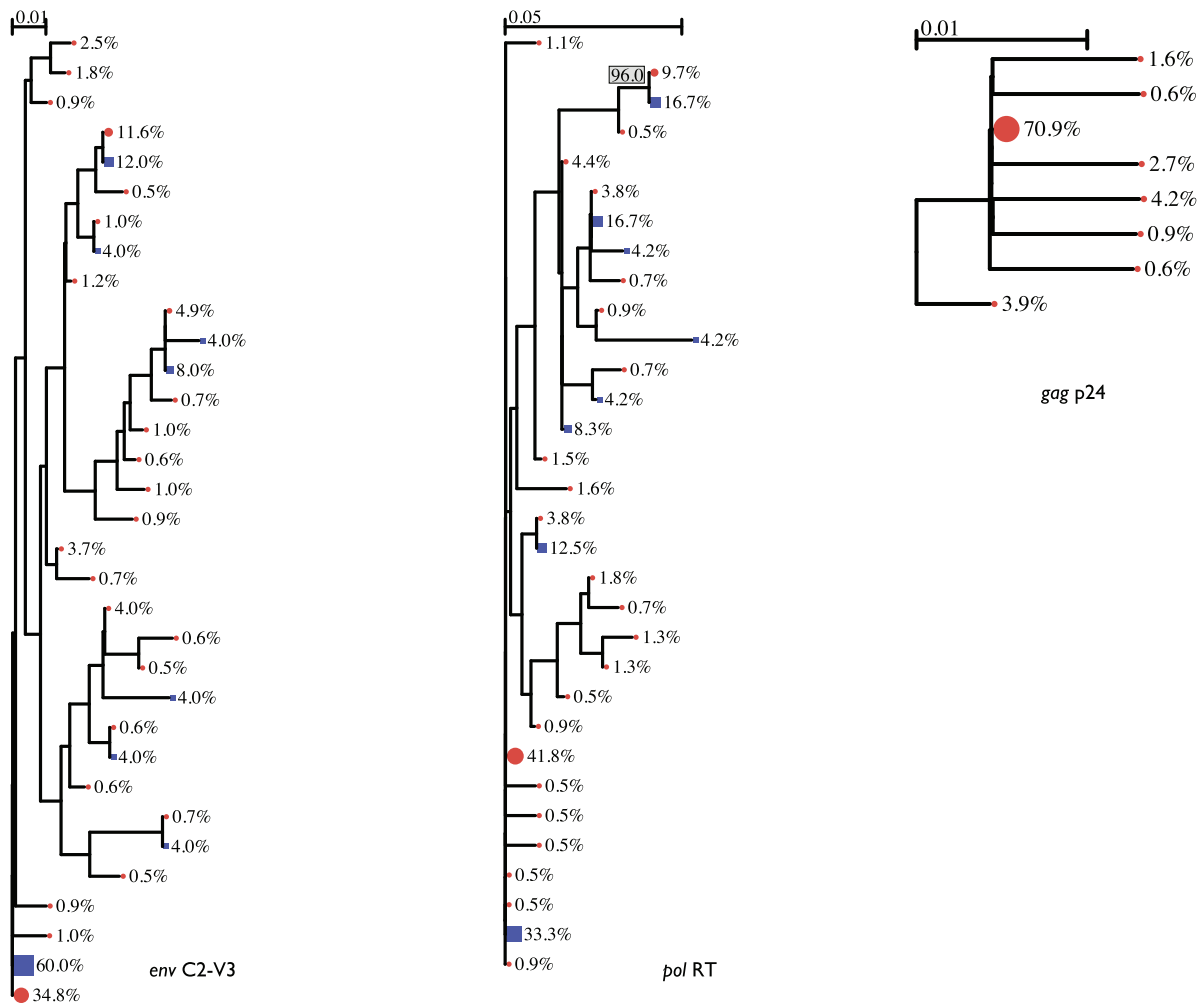
SUPPLEMENTARY FIG. 8. Sample D1, UDS duplicate 2. Third year of infection. DI in *env* and *pol*. UDS are represented as red circles and SGS as blue squares. Variant abundances per node and branches with >90% bootstrap support are labeled.



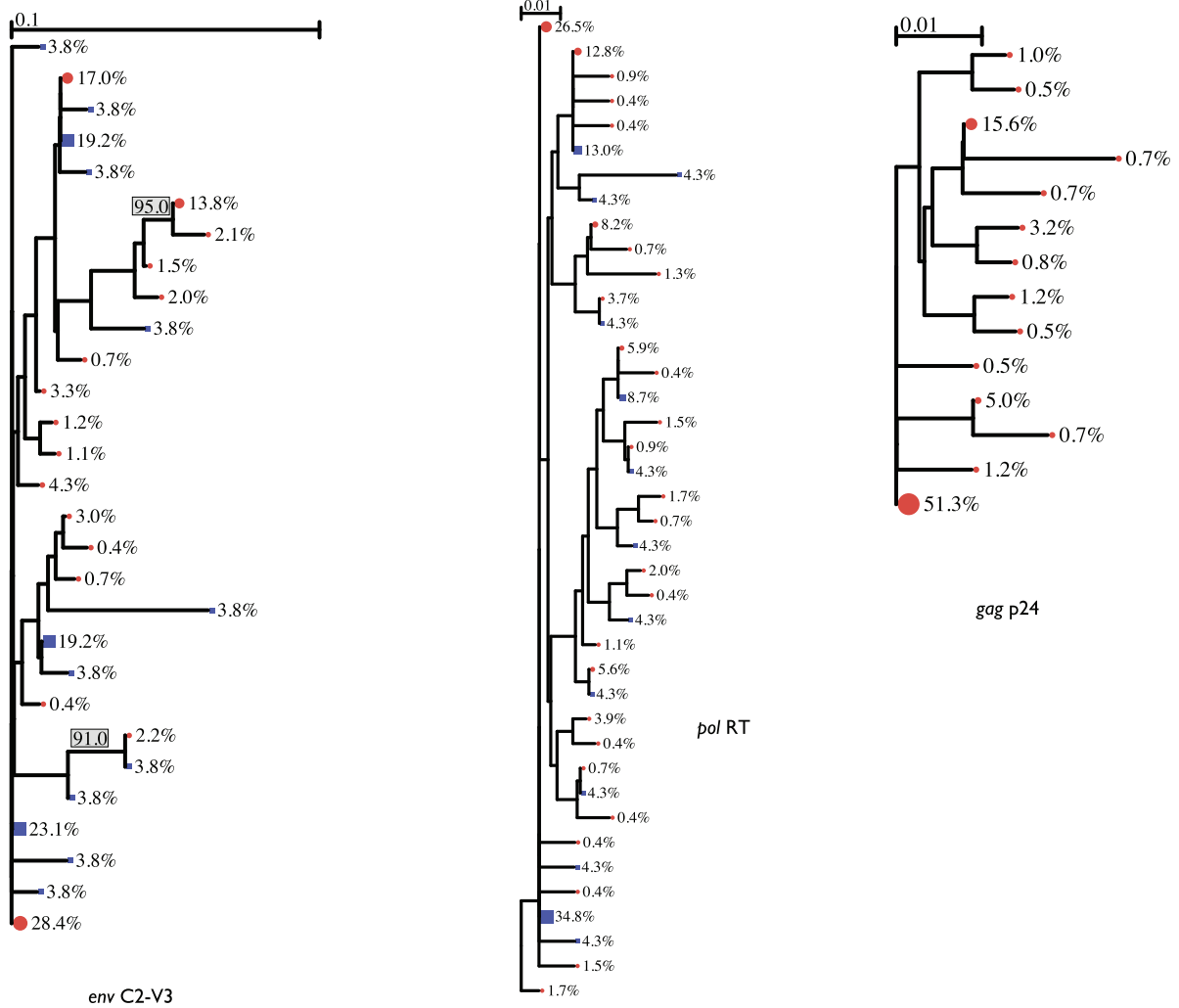
SUPPLEMENTARY FIG. 9. Sample D2, UDS duplicate 1. Third year of infection. DI in *env* and *pol*. UDS are represented as red circles and SGS as blue squares. Variant abundances per node and branches with >90% bootstrap support are labeled.



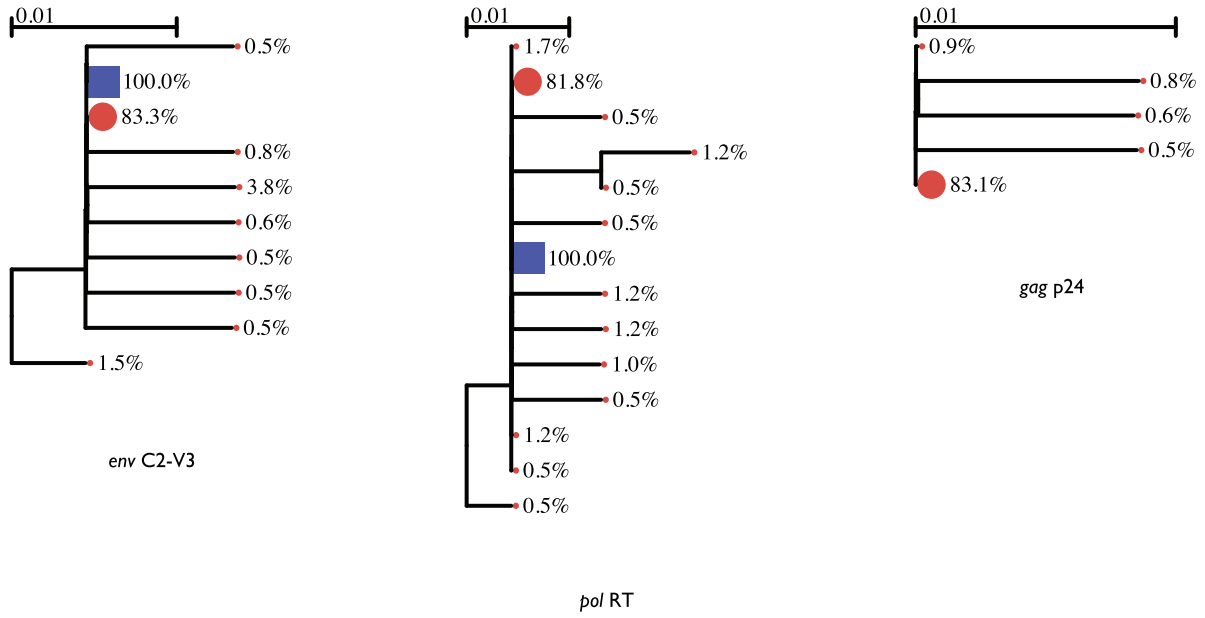
SUPPLEMENTARY FIG. 10. Sample D2, UDS duplicate 2. Third year of infection. DI in *env* and *pol*. UDS are represented as red circles and SGS as blue squares. Variant abundances per node and branches with >90% bootstrap support are labeled.



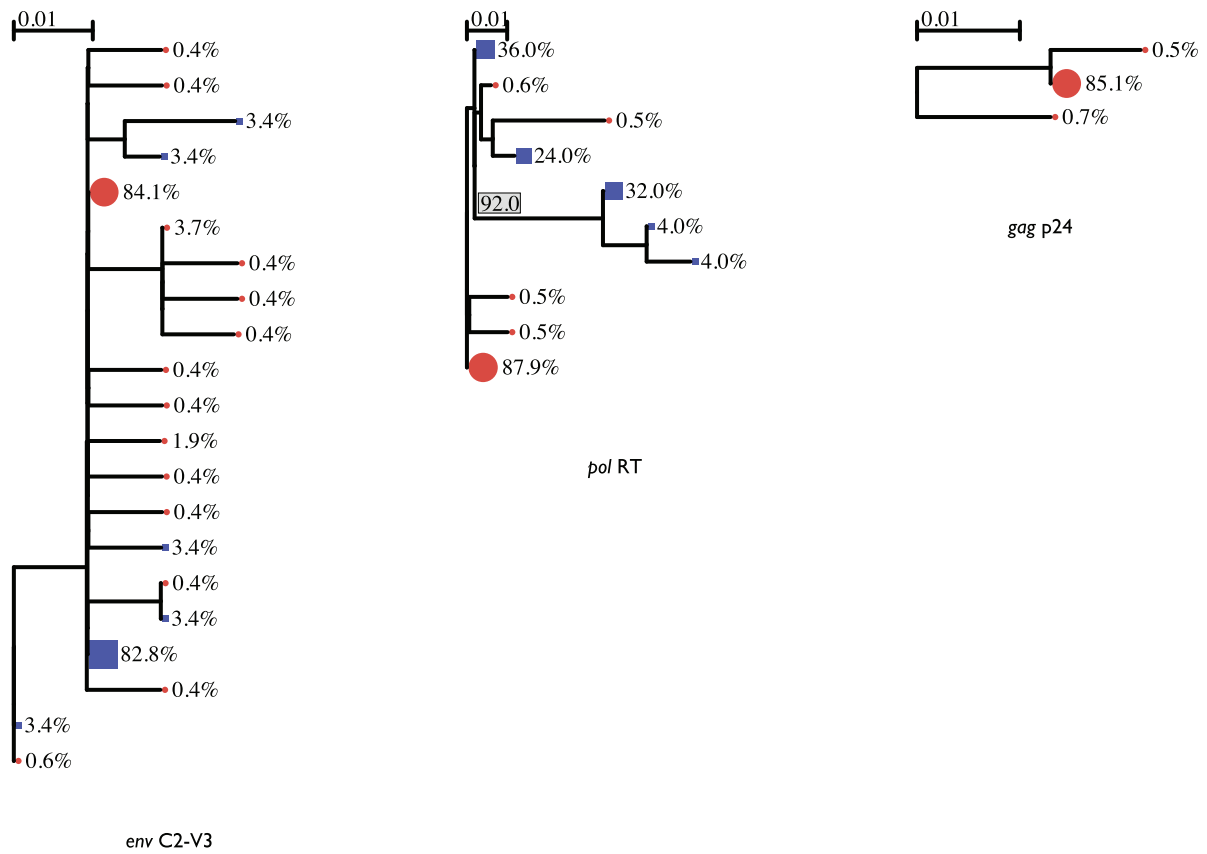
SUPPLEMENTARY FIG. 11. Sample E. Fourth year of infection. No evidence of DI. UDS are represented as *red circles* and SGS as *blue squares*. Variant abundances per node and branches with >90% bootstrap support are labeled.



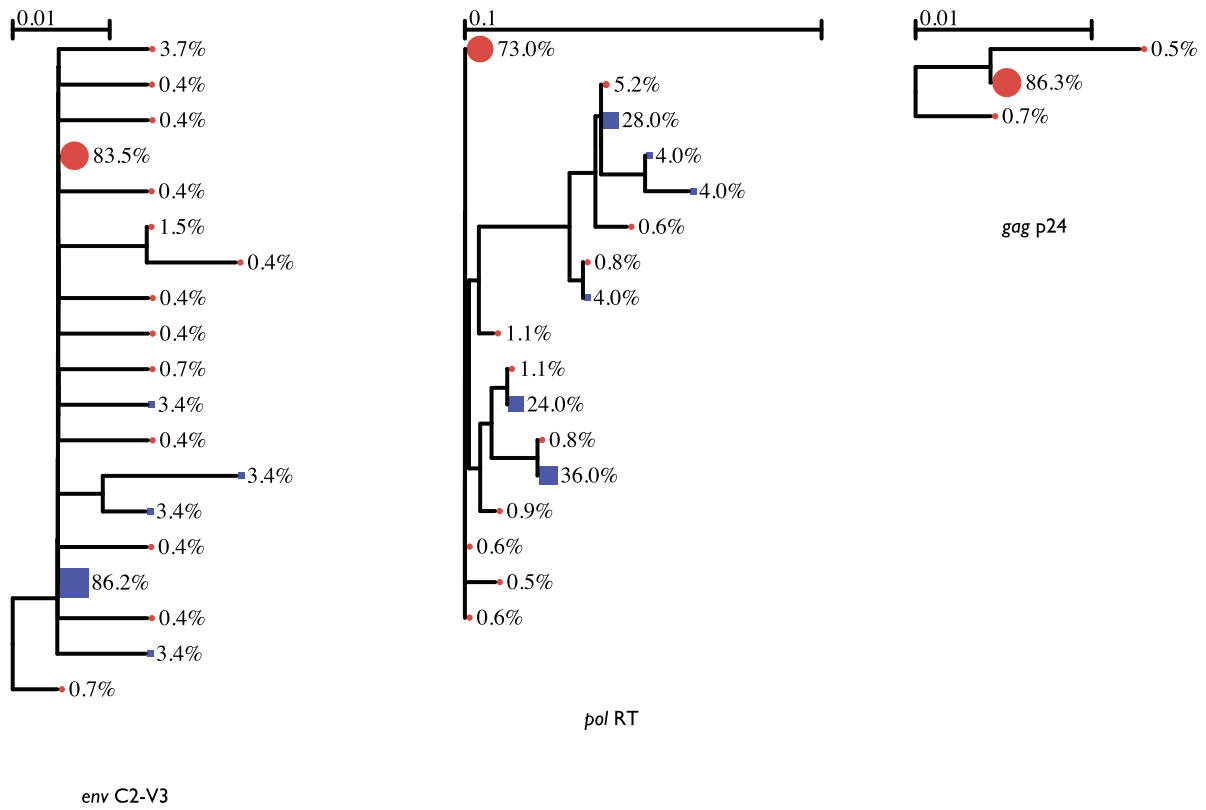
SUPPLEMENTARY FIG. 12. Sample F. Fifth year of infection (third year of ART). No evidence of DI. UDS are represented as red circles and SGS as blue squares. Variant abundances per node and branches with >90% bootstrap support are labeled.



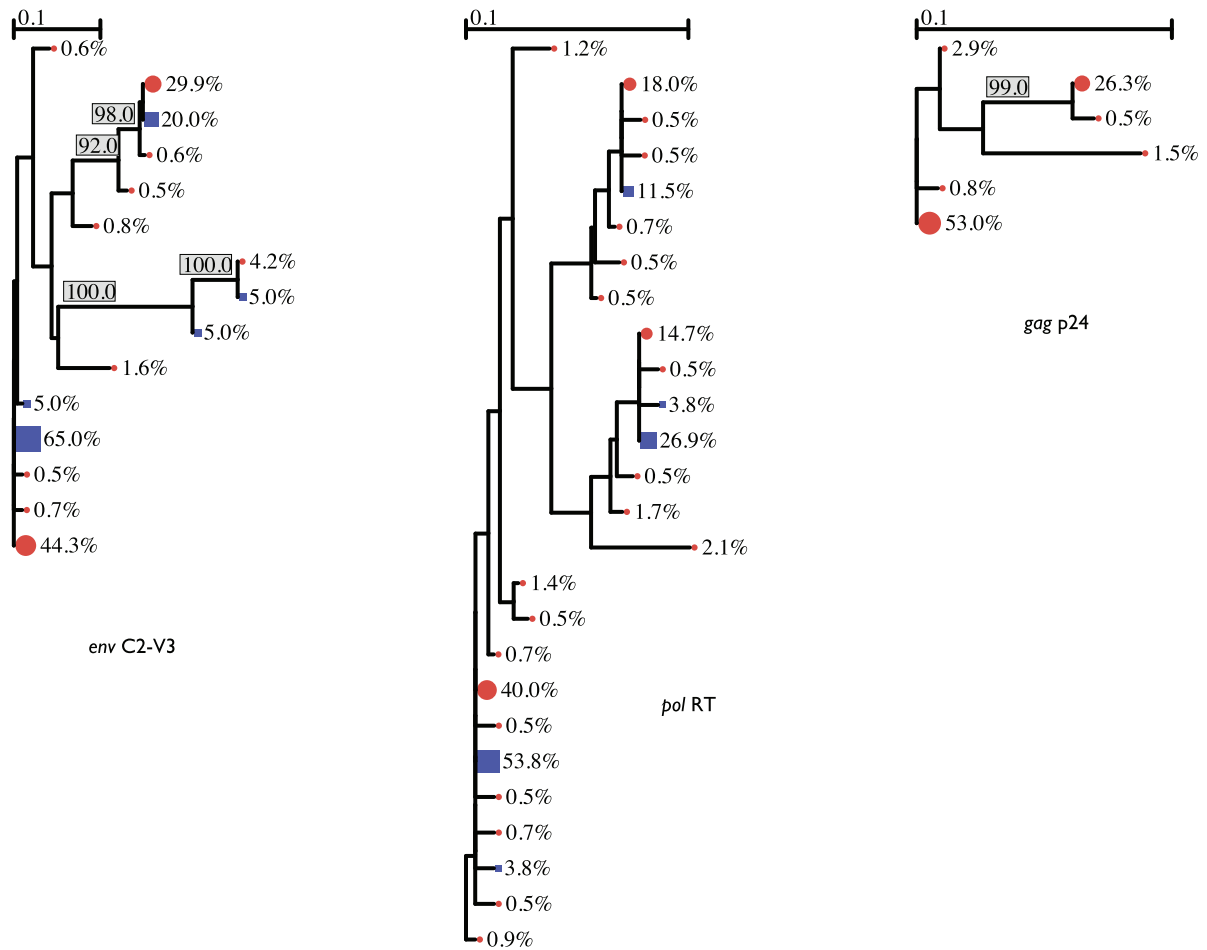
SUPPLEMENTARY FIG. 13. Sample G. First year of infection. No evidence of DI. UDS are represented as *red circles* and SGS as *blue squares*. Variant abundances per node and branches with >90% bootstrap support are labeled.



SUPPLEMENTARY FIG. 14. Sample H, UDS duplicate 1. Sixth year of infection (fifth year of ART). DI in *pol* only. UDS are represented as red circles and SGS as blue squares. Variant abundances per node and branches with >90% bootstrap support are labeled.



SUPPLEMENTARY FIG. 15. Sample H, UDS duplicate 2. Sixth year of infection (fifth year of ART). DI in *pol* only. UDS are represented as *red circles* and SGS as *blue squares*. Variant abundances per node and branches with >90% bootstrap support are labeled.



SUPPLEMENTARY FIG. 16. Sample I, UDS duplicate 2. First year of infection. DI in *env*, *pol*, and *gag*. UDS are represented as red circles and SGS as blue squares. Variant abundances per node and branches with >90% bootstrap support are labeled.