

Fig. S1

Consecutive replicates of the protonated reserpine ion peak measured at {DV = 4 kV; 75% He} using $Q = 0.7$ L/min (half of the 24-peak sequence is shown).

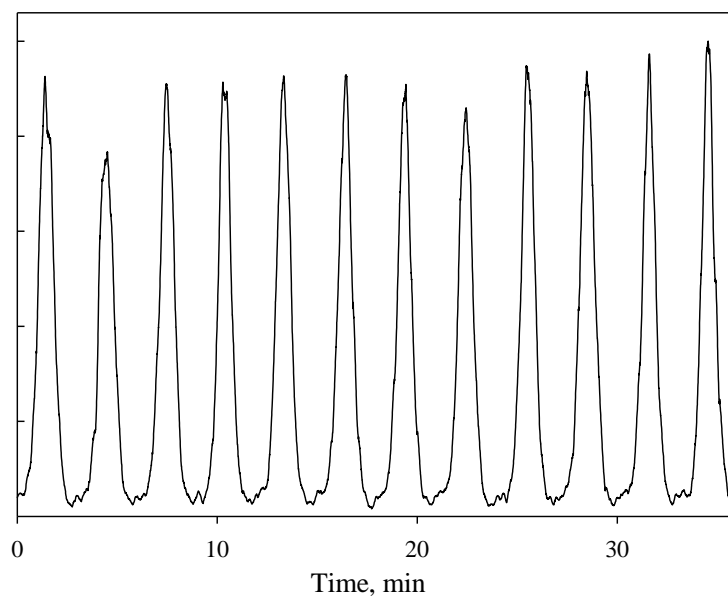


Fig. S2

Consecutive replicates of the peaks for 3+ ions of Syntide 2 measured using $Q = 0.8$ L/min: (a, b) the high- E_C peak at (a) {DV = 5.4 kV; 50% He} and (b) {DV = 4 kV; 75% He}; (c) the low- E_C peak under the conditions (b).

