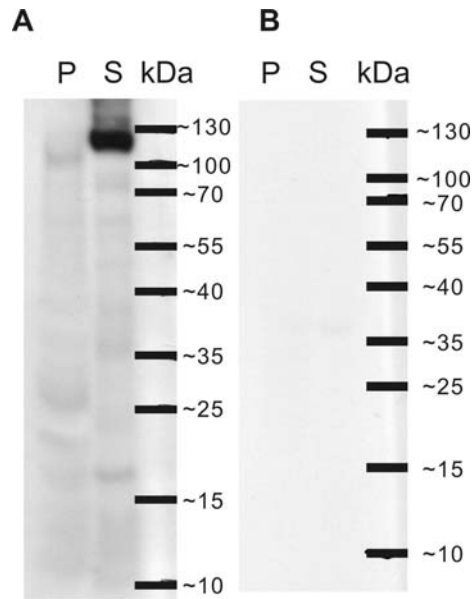


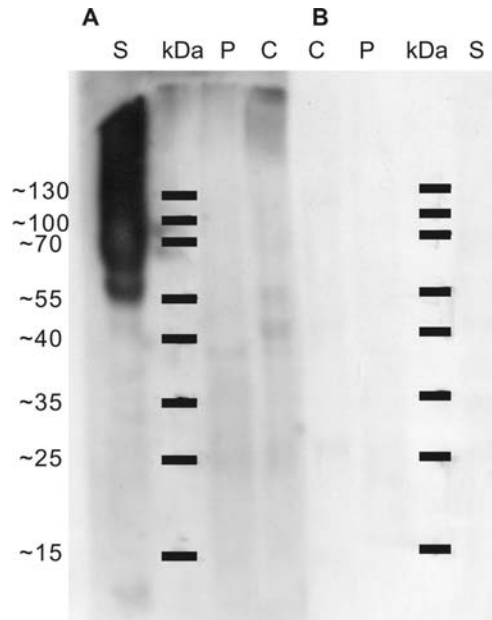
Supplementary Material for

**PANCREATIC BICARBONATE SECRETION – A CASE FOR TWO PROTON PUMPS**

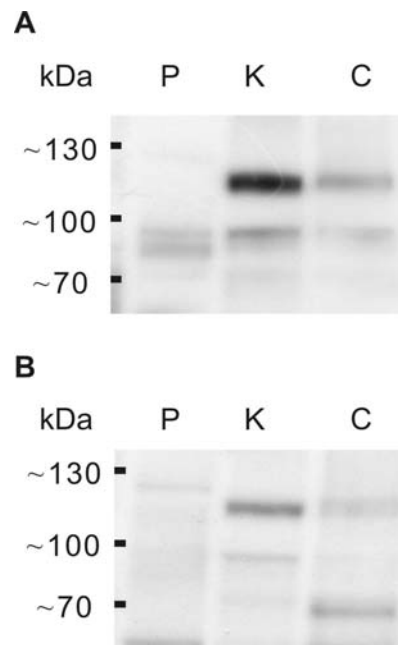
By Ivana Novak Ivana Novak<sup>a</sup>, Jing Wang<sup>a</sup>, Katrine L. Henriksen<sup>a</sup>, Kristian A. Haanes<sup>a</sup>, Simon Krabbe<sup>a</sup>, Roland Nitschke<sup>b</sup>, Susanne E. Hede<sup>a</sup>



**Figure 1** Western blot on membrane fraction proteins extracted from pancreas (P) and stomach (S). A. Primary antibody against gastric pump HKa subunit (Calbiochem 119101) was used. B. Control membranes were without the primary antibody.



**Figure 2** Western blot on membrane fraction proteins extracted from pancreas (P), stomach (S) and colon (C). A. Primary antibody against gastric pump HKb subunit (Sigma A-274) was used. B. Control membranes were without the primary antibody.



**Figure 3** Western blot on membrane fraction proteins extracted from pancreas (P), kidney (K) and colon (C).. A. Primary antibody against non-gastric pump HKa2 subunit (C384-M79) was used. B. Control gel with the blocking peptide (50 mg/ml) and the primary antibody (1:1000). The blots contained a number of unspecific bands, but the the bands of around 125 kDa and 80-90 kDa, corresponding to the full length and truncated variant of HKa2 were weaker with the blocking peptide.

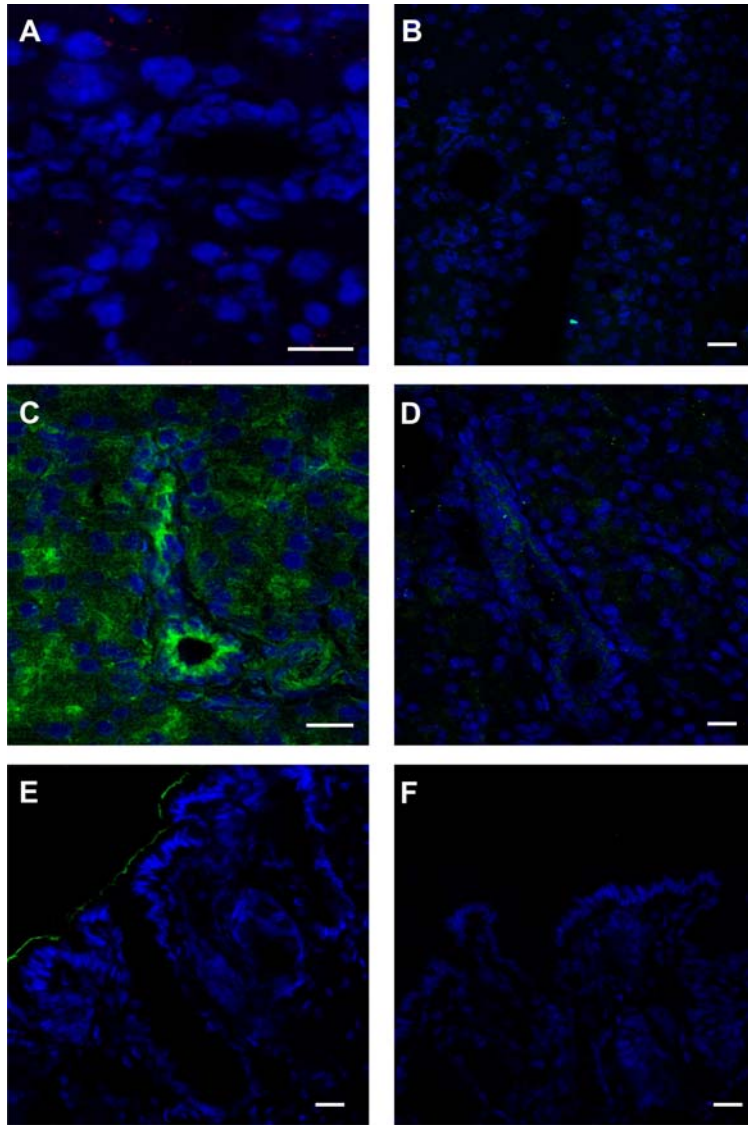


Figure 4. Images shows controls. A and B are without primary antibodies but with secondary antibodies cy3 and A488, respectively and DAPI. C and E are images of pancreas and colon, respectively, stained with the HKa2 antibody and DAPI. Images D and F are similar preparations with the antibody plus the blocking peptide (1:200 and 200 μg/ml). Scale bars are 20 μm.